



25 Halfmoon Crescent, Islington, London, N1 9SS

£450 Per Week

25 Halfmoon Crescent, Islington N1 9SS

Beautifully Presented One-Bedroom Flat with Versatile Second Room – Prime Angel Location

Located in the heart of one of North London's most vibrant neighbourhoods, this beautifully presented one double bedroom flat offers modern living in a superb location. Thoughtfully designed and well maintained throughout, this property is ideal for a professional individual or couple seeking both comfort and convenience.

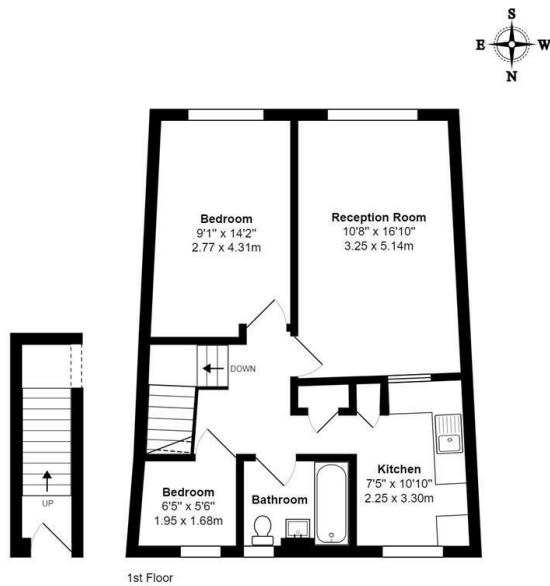
The flat comprises a generously sized double bedroom with ample natural light, alongside a second smaller room that offers flexible usage. Whether you're in need of a dedicated home office, creative studio, or occasional guest room, this space can easily be adapted to suit your lifestyle.

Situated just a short stroll from Angel Tube Station (Northern Line), the flat boasts excellent transport links into the City, Central London, and beyond. The N1 Centre, with its array of shops, restaurants, and a cinema, is just around the corner, offering everything you need on your doorstep. Additionally, the popular Upper Street is only a 10-minute walk away, where you'll find a wide selection of boutiques, cafés, bars, and cultural hotspots.



Council Tax Band: C

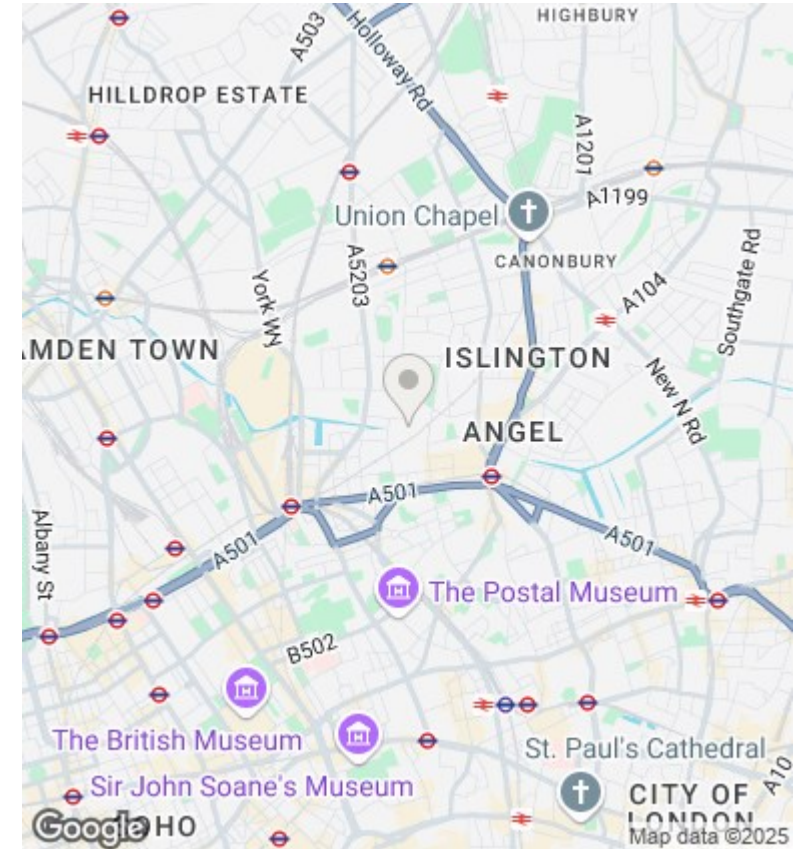




1st Floor

Half Moon Crescent N1

Total Area: 607 ft² ... 56.4 m²
Floor plans are for identification and guideline purposes only, not to scale
Compliant RICS code of measuring practice



Directions

Viewings

Viewings by arrangement only. Call 02073593191 to make an appointment.

Council Tax Band

C

Energy Efficiency Rating		
	Current	Potential
Very energy efficient - lower running costs		
(92 plus) A		
(81-91) B		
(69-80) C	70	78
(55-68) D		
(39-54) E		
(21-38) F		
(1-20) G		
Not energy efficient - higher running costs		
England & Wales	EU Directive 2002/91/EC	

Full description

Beautifully Presented One-Bedroom Flat with Versatile Second Room – Prime Angel Location

Located in the heart of one of North London's most vibrant neighbourhoods, this beautifully presented one double bedroom flat offers modern living in a superb location. Thoughtfully designed and well maintained throughout, this property is ideal for a professional individual or couple seeking both comfort and convenience.

The flat comprises a generously sized double bedroom with ample natural light, alongside a second smaller room that offers flexible usage. Whether you're in need of a dedicated home office, creative studio, or occasional guest room, this space can easily be adapted to suit your lifestyle.

Situated just a short stroll from Angel Tube Station (Northern Line), the flat boasts excellent transport links into the City, Central London, and beyond. The N1 Centre, with its array of shops, restaurants, and a cinema, is just around the corner, offering everything you need on your doorstep. Additionally, the popular Upper Street is only a 10-minute walk away, where you'll find a wide selection of boutiques, cafés, bars, and cultural hotspots.



