



118 Stapleton Hall Road, London, N4 4QA

£692 Per Week

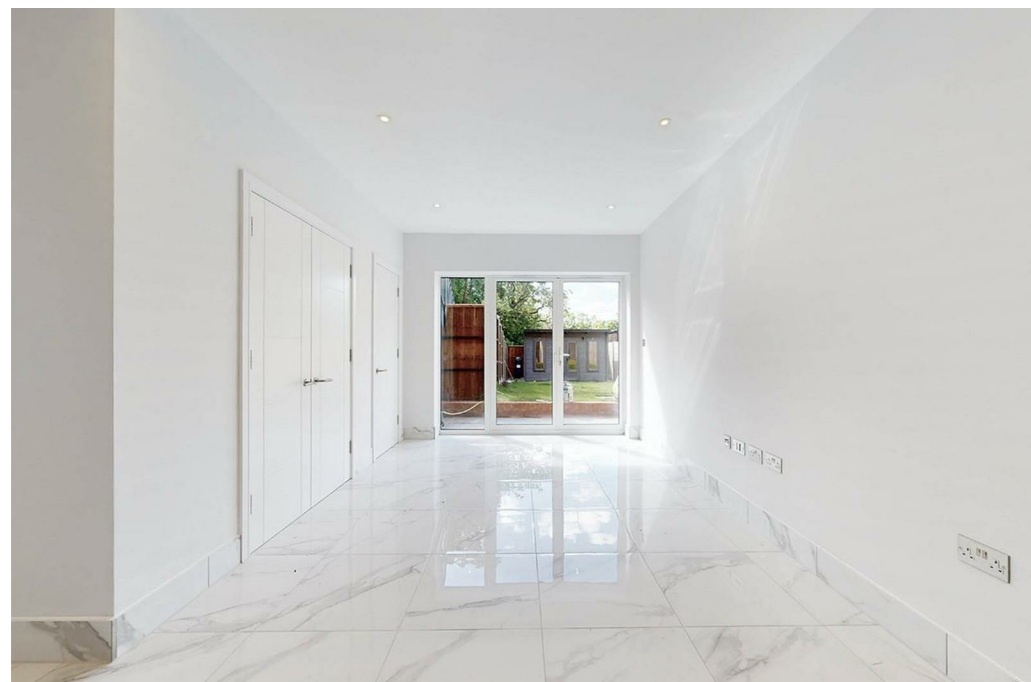
118 Stapleton Hall Road, London N4 4QA

Alwyne Estates are delighted to offer this hi spec newly converted garden flat with its own entrance and its own private garden comprising 2 bedrooms one of which has an ensuite bathroom, open-plan living room into a fully fitted kitchen, bathroom and wc.

Situated in a highly sought after location in the heart of Stroud Green with easy access to HarlIngey Mainline station and within easy reach of the multiple shops, cafes, bars and restaurants in Crouch End as well as being within a short distance of Finsbury Park transport hub as well as the Park Theatre and cinema within the new City North development. For keen walkers the entrance to Parkland Walk is a few minutes away as well as the delights of Finsbury Park open space.



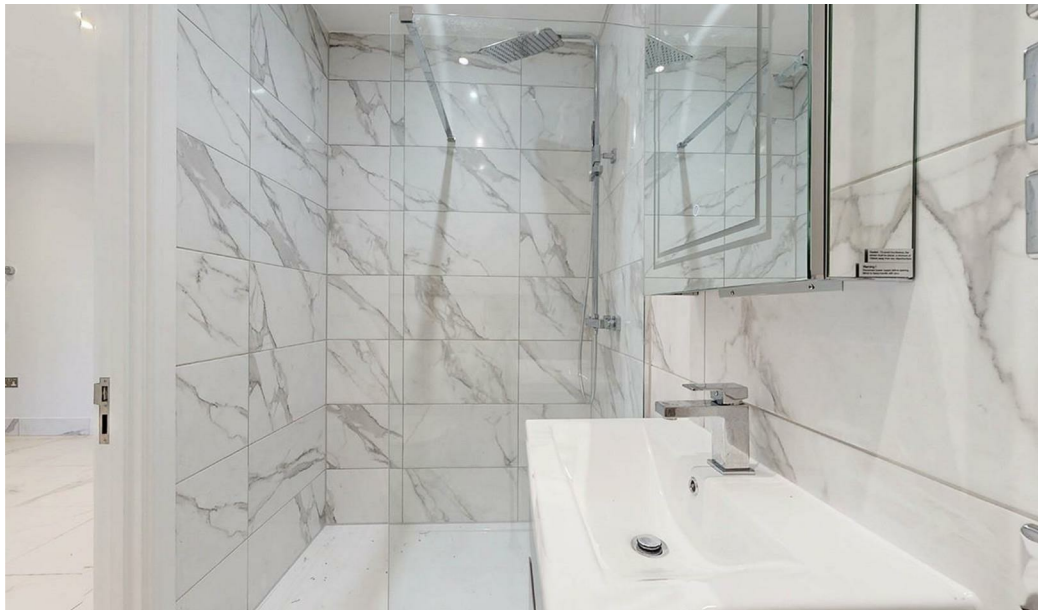
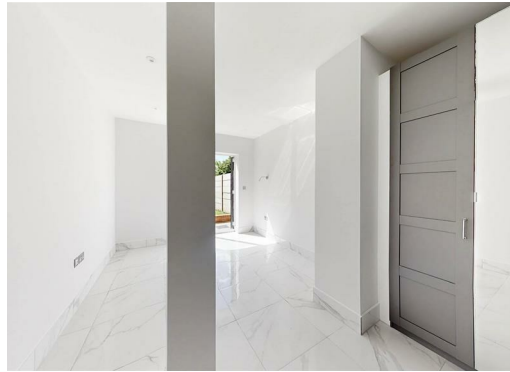
Council Tax Band: C

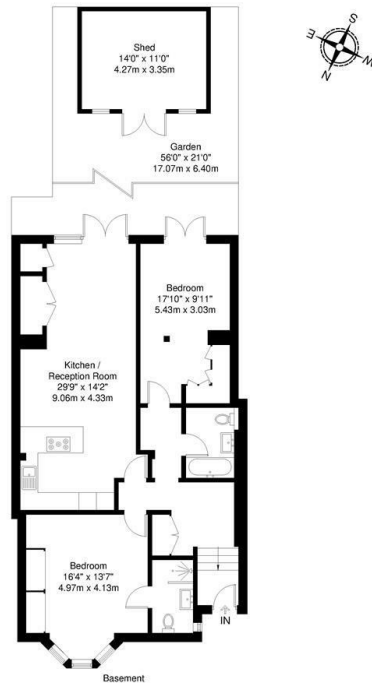


Full description

Full description







Stapleton Hall Road, N4

Total Gross Internal Area = 95.8 sq m / 1031 sq ft

All Measurements are approximate and for identification guideline purposes only, not to scale. Compliant with the RICS code of measuring practice

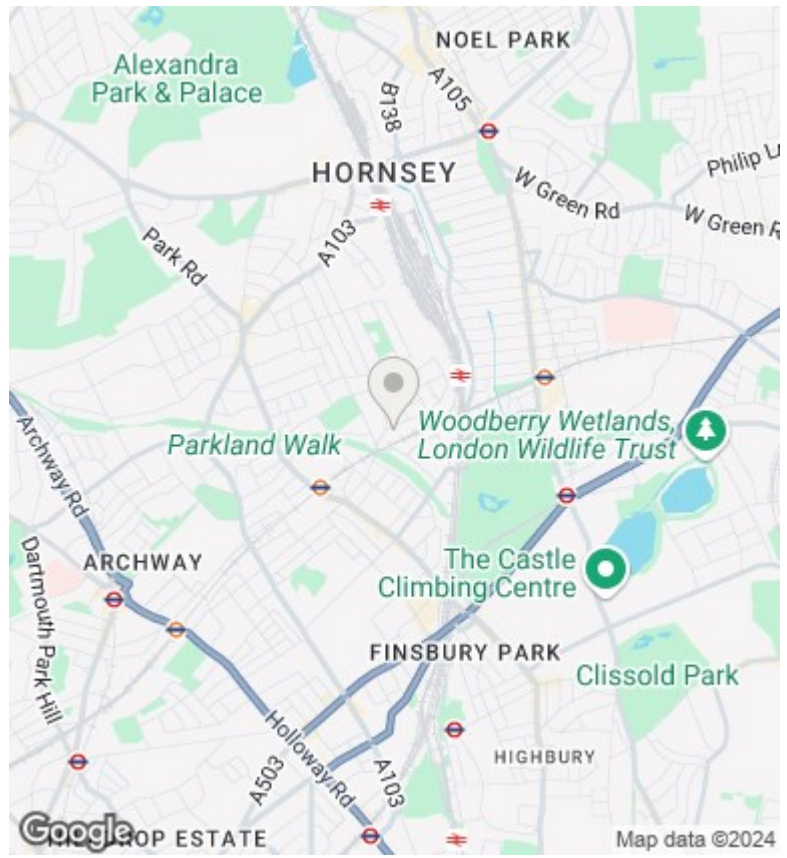
Directions

Viewings

Viewings by arrangement only. Call 02073593191 to make an appointment.

Council Tax Band

C



Energy Efficiency Rating		
	Current	Potential
Very energy efficient - lower running costs		
(92 plus) A		
(81-91) B	78	78
(69-80) C		
(55-68) D		
(39-54) E		
(21-38) F		
(1-20) G		
Not energy efficient - higher running costs		
England & Wales	EU Directive 2002/91/EC	