



## 22b Finsbury Park Road, London, N4 2JZ

**£681 Per Week**

- 3 Double Bedrooms
- Wood Flooring Throughout
- Finsbury Park Tube
- Open Plan Kitchen/Living Room

# 22b Finsbury Park Road, London N4 2JZ

FOR RENT: Spacious 3-Bedroom Flat in Victorian Conversion

Available from mid-October, this large three-bedroom flat is set on the first floor of a charming Victorian conversion, offering both character and modern comforts.

**Key Features:**

Bedrooms: 3 spacious double bedrooms

Living Space: Large open-plan lounge and kitchen area

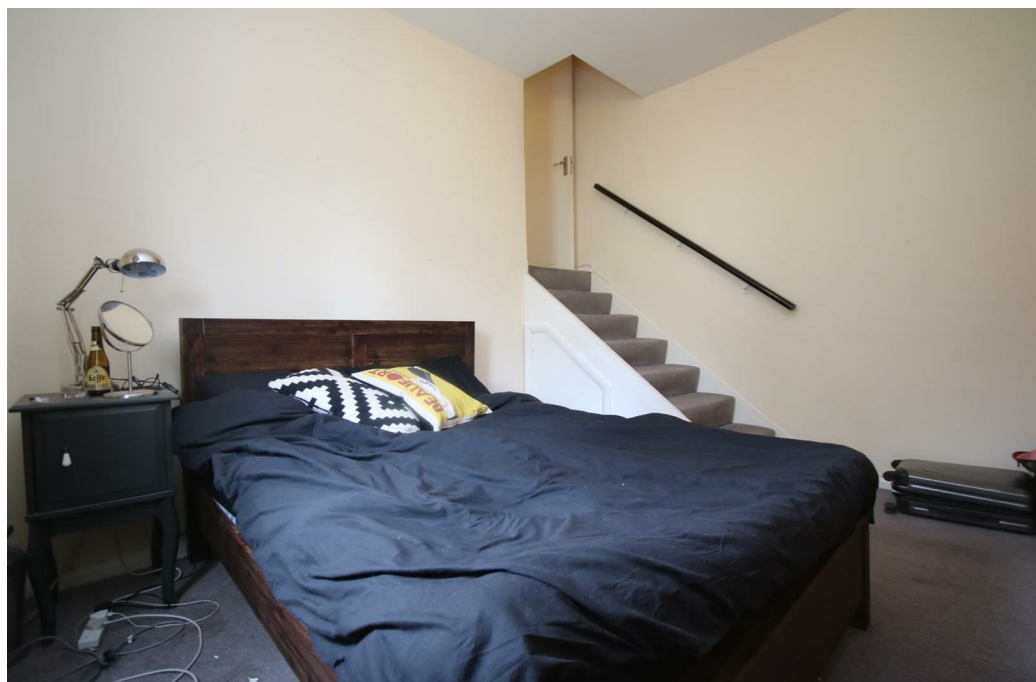
Interior: Wooden floors throughout (carpet in the bedrooms), with a contemporary bathroom

Location: Ideally located within walking distance of Finsbury Park Station, providing excellent transport links and access to local amenities

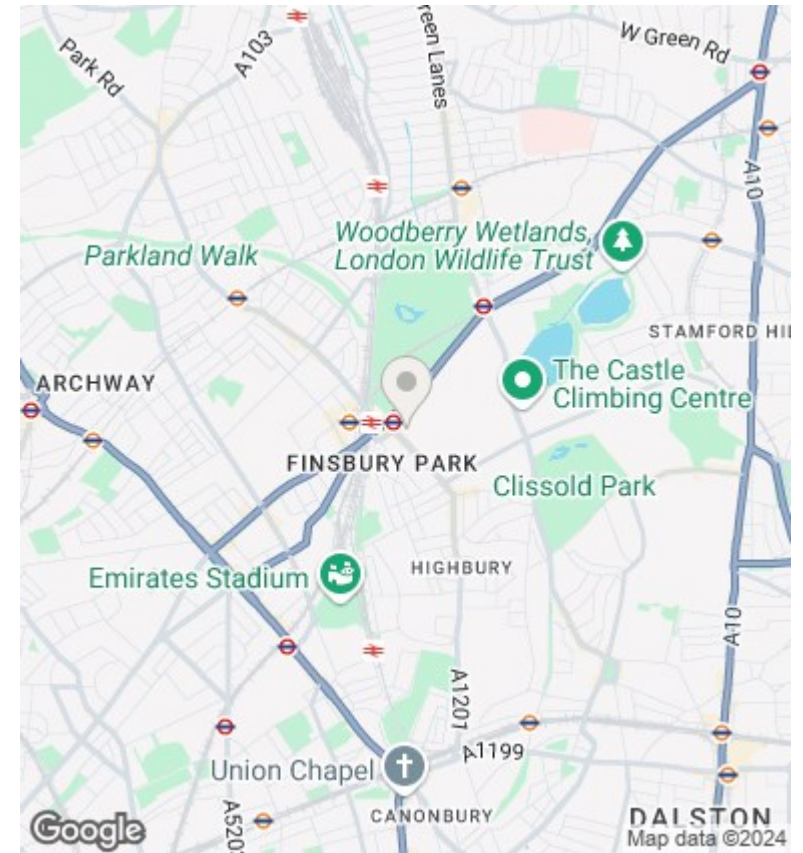
This property combines Victorian charm with modern style, making it perfect for those seeking a well-connected, comfortable home.



Council Tax Band: D



## Directions



## Viewings

Viewings by arrangement only. Call 02073593191 to make an appointment.

## Council Tax Band

D

| Energy Efficiency Rating                    |  | Current                 | Potential |
|---|--|-------------------------|-----------|
| Very energy efficient - lower running costs |  |                         |           |
| (92 plus) A                                 |  |                         |           |
| (81-91) B                                   |  |                         | 79        |
| (69-80) C                                   |  | 69                      |           |
| (55-68) D                                   |  |                         |           |
| (39-54) E                                   |  |                         |           |
| (21-38) F                                   |  |                         |           |
| (1-20) G                                    |  |                         |           |
| Not energy efficient - higher running costs |  |                         |           |
| <b>England &amp; Wales</b>                  |  | EU Directive 2002/91/EC |           |

**Full description**

Large 3 bedroom flat set on the first floor of a charming Victorian conversion. The property is minutes away from Finsbury Park tube station with its array of transport links. Available Mid-October.

**Full description**

Large 3 bedroom flat set on the first floor of a charming Victorian conversion. The property features a large open plan lounge/kitchen and modern bathroom. Minutes from Finsbury Park tube station with its array of transport links, this is an ideal allocation for getting into or out of the City & West End. Offered on a fully furnished basis.

EPC Band D





