



324A Liverpool Road, London, N7 8PU

£704 Per Week

324A Liverpool Road, London N7 8PU

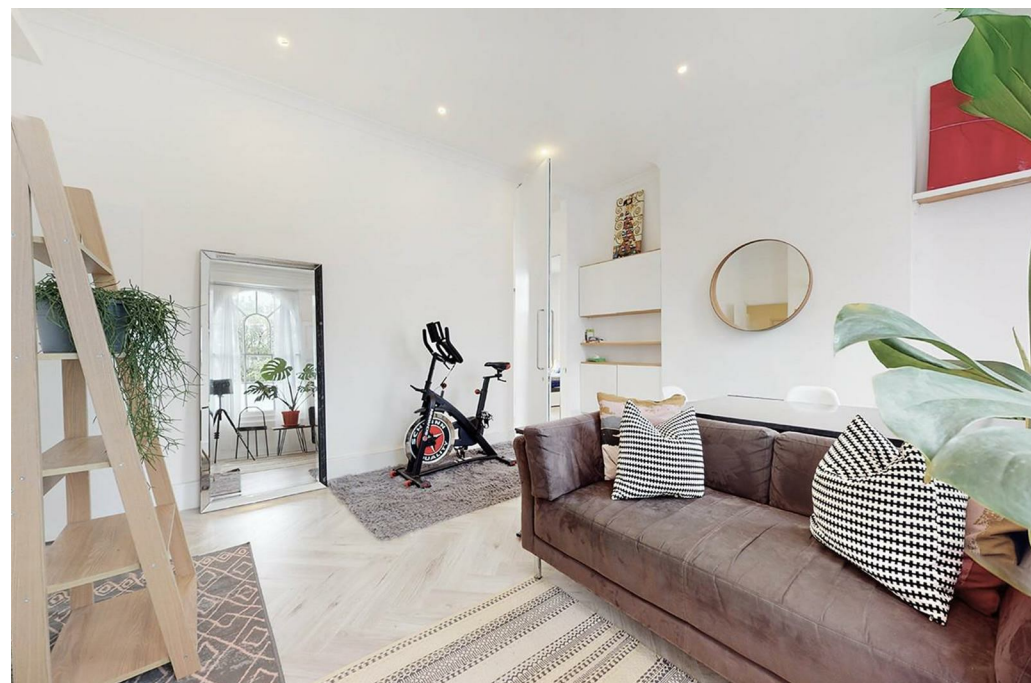
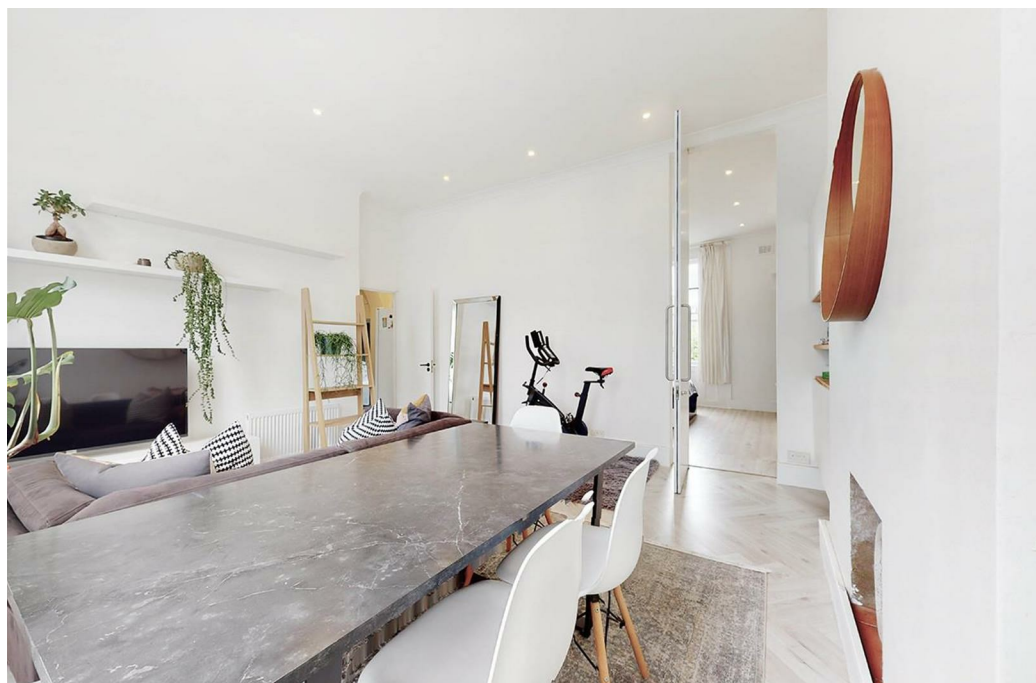
This stunning two bedroom apartment in a Grade-II listed Georgian building is positioned in a sought-after location in the heart of Barnsbury.

Set back from the road, the property comprises a spacious light filled reception room with high ceilings and large sash windows, separate kitchen with plenty of storage, a modernised family bathroom with a bath tub and walk in shower, the property has a large master bedroom and second double bedroom.

The property is ideally located only a short walk from Highbury & Islington station and within easy reach of Upper Street offering a vast array of cafes, restaurants and shops.



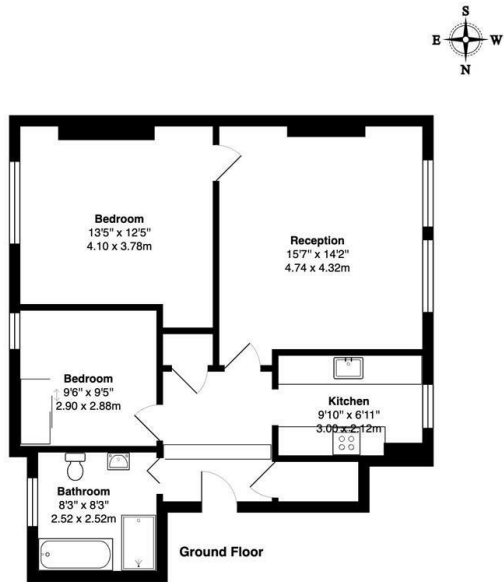
Council Tax Band: C



Full description







Liverpool Road, N7

Total Gross Area: 757 ft² ... 70.3 m²

All measurements are approximate and for identification guideline purposes only, not to scale.
Compliant with the RICS code of measuring practice

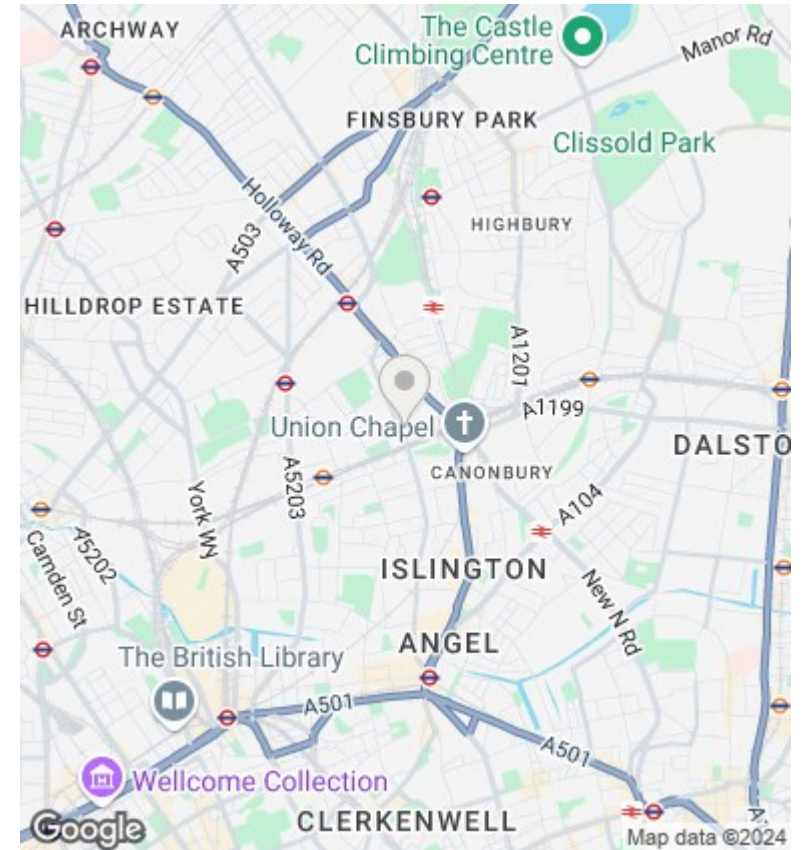
Directions

Viewings

Viewings by arrangement only. Call 02073593191 to make an appointment.

Council Tax Band

C



Energy Efficiency Rating		
	Current	Potential
<i>Very energy efficient - lower running costs</i>		
(92 plus) A		
(81-91) B		
(69-80) C		
(55-68) D		
(39-54) E		
(21-38) F		
(1-20) G		
<i>Not energy efficient - higher running costs</i>		
	66	74
England & Wales	EU Directive 2002/91/EC	