



38 Offord Road, London, N1 1DL

£365,000



## 38 Offord Road, London N1 1DL

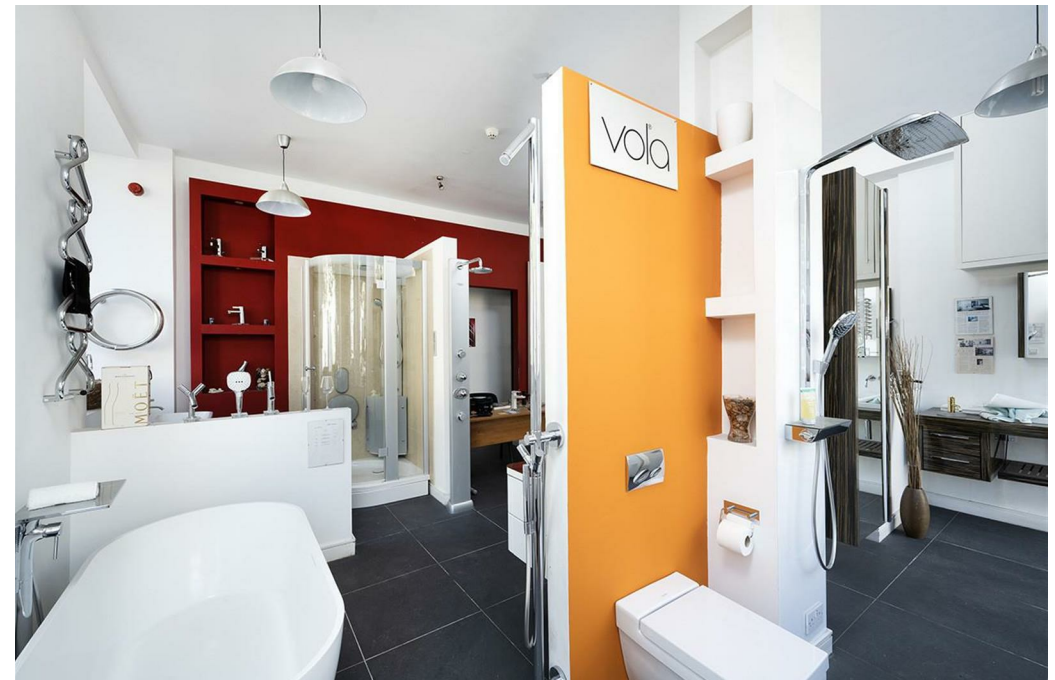
Alwyne Estates are sole agents on this fantastic leasehold Commercial Shop for sale with a lease of over 900 years. The commercial premises is split over two floors and spans over a total of 80Sq metres and is currently used as a kitchen showroom.

The property is in a prominent corner position in the heart of Barnsbury, N1 with lots of passing foot fall.

The property has excellent transport links with Highbury & Islington underground and Barnsbury & Caledonian Overground within walking distance.



Council Tax Band:



### Full description

Alwyne Estates are sole agents on this fantastic leasehold Commercial Shop for sale. The commercial premises is split over two floors and spans over a total of 80 Sq metres and is in a prominent corner position in the heart of Barnsbury, N1 with lots of passing footfall. The property has excellent transport links with Highbury & Islington underground and Barnsbury & Caledonian Overground within walking distance.





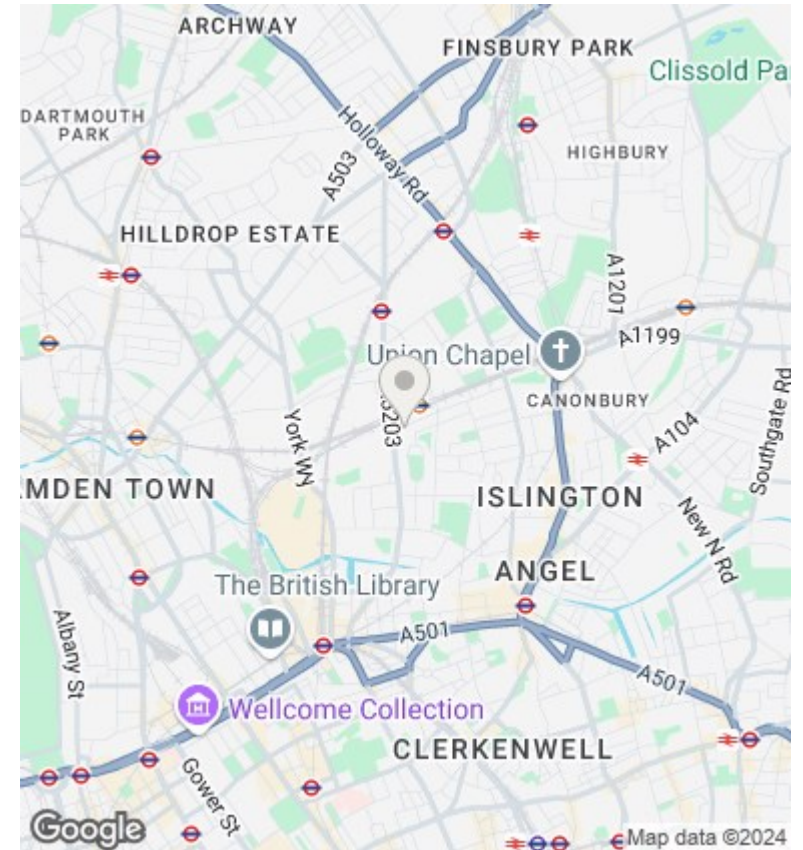


## Directions

## Viewings

Viewings by arrangement only. Call 02073593191 to make an appointment.

## Council Tax Band



Energy Efficiency Rating		
	Current	Potential
<i>Very energy efficient - lower running costs</i>		
(92 plus) <b>A</b>		
(81-91) <b>B</b>		
(69-80) <b>C</b>		
(55-68) <b>D</b>		
(39-54) <b>E</b>		
(21-38) <b>F</b>		
(1-20) <b>G</b>		
<i>Not energy efficient - higher running costs</i>		
<b>England &amp; Wales</b>	EU Directive 2002/91/EC	