



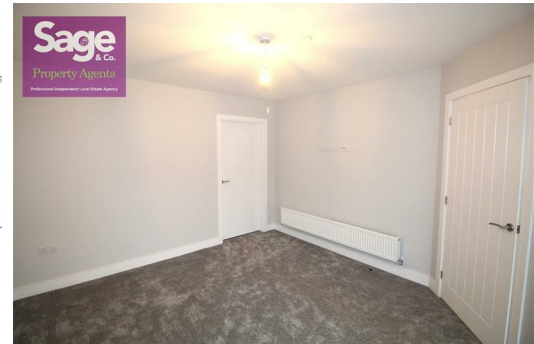
**Plot 11 Second Phase, Isobel Court, Risca, NP11 6JH**  
**Offers In Excess Of £250,000**

**\*\*LAST ONE REMAINING!!!!**  
**\*\*HELP TO BUY AVAILABLE\*\* \*\*CONTACT US TODAY TO MAKE YOUR RESERVATION\*\***

Only ONE stunning semi detached property remaining in this quiet cul de sac location close to local amenities and the town centre.  
The images displayed are of the previous show home and are an accurate depiction of the finish, fixtures and fittings of these quality family homes set on this desirable small development.

**AGENTS NOTE:**

All room sizes are approximate and the images displayed are of the former show home and are for illustration purposes only.



70 Tredgar Street Risca NP11 6BW  
**Telephone:** 01633 838888 **Email:** risca@sageandco.co.uk

## ENTRANCE HALLWAY

## LIVING ROOM

13'10" x 12'1" approx (4.22 x 3.69 approx)

## INNER HALLWAY/LOBBY

## GROUND FLOOR WC

## KITCHEN/DINER

15'5" x 9'3" approx (4.70 x 2.83 approx)

## STAIRS TO THE FIRST FLOOR - LANDING

## BEDROOM ONE

9'10" x 9'2" approx (3.00 x 2.81 approx)

## ENSUITE SHOWER ROOM

## BEDROOM TWO

10'9" max x 9'2" (3.28 max x 2.81)

## BEDROOM THREE

11'6" x 6'3" approx (3.52 x 1.93 approx)

## FAMILY BATHROOM

## OUTSIDE

FRONT: Block paved driveway.

SIDE: Pedestrian access to rear.

REAR: Paved patio area.

