



**2 Bed  
House - Semi-  
Detached  
located in**

£1,350 Per Month



**G R E G O R Y S**  
— E S T A T E   A G E N T S —

35 Holly Hill Road  
Bristol  
BS15 4DF



2



1



1

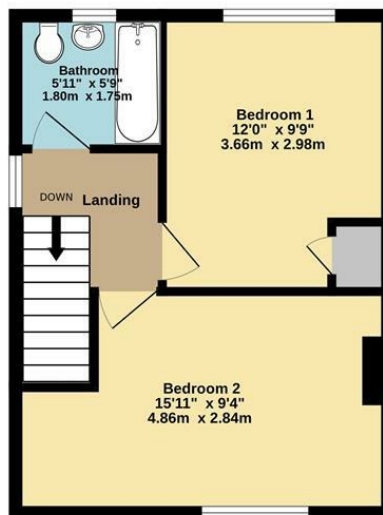
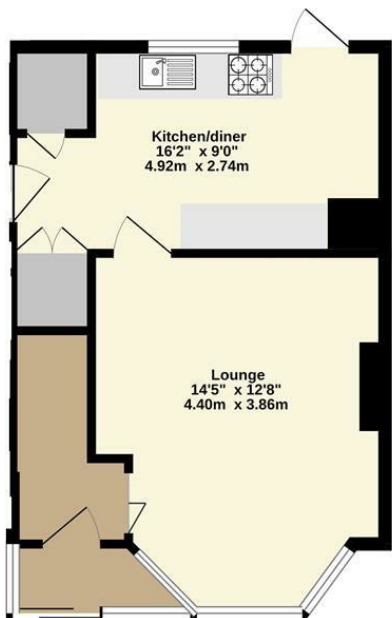


C



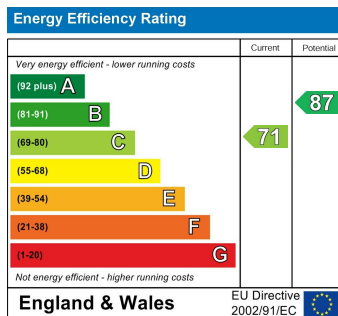
Ground Floor  
511 sq.ft. (47.5 sq.m.) approx.

1st Floor  
347 sq.ft. (32.2 sq.m.) approx.



TOTAL FLOOR AREA: 858 sq.ft. (79.7 sq.m.) approx.

Whilst every attempt has been made to ensure the accuracy of the floorplan contained here, measurements of doors, windows, rooms and any other items are approximate and no responsibility is taken for any error, omission or mis-statement. This plan is for illustrative purposes only and should be used as such by any prospective purchaser. The services, systems and appliances shown have not been tested and no guarantee as to their operability or efficiency can be given.  
Made with MetroPix ©2024



## DIRECTIONS

## CONTACT

Unit 1 Market Walk  
Keynsham  
Bristol  
BS31 1FS

E: [enquiries@gregorys.click](mailto:enquiries@gregorys.click)  
T: 01179 866644  
[gregorys.click](http://gregorys.click)



GREGORYS  
— ESTATE AGENTS —