



**2 Bed
House - End
Terrace
located in**

Asking Price £279,950



G R E G O R Y S
— E S T A T E A G E N T S —

1 Showering Road
Bristol
BS14 8DL



2



1



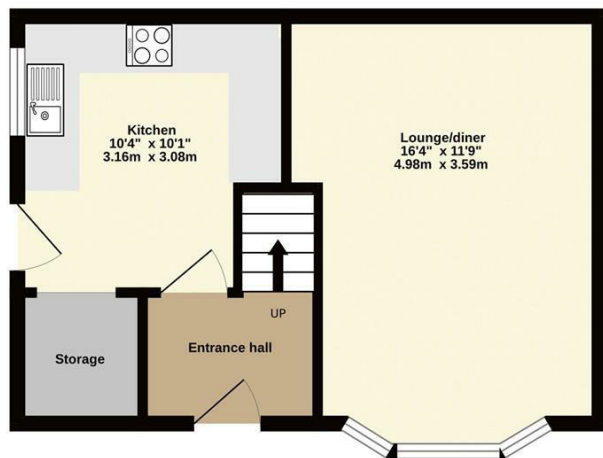
1



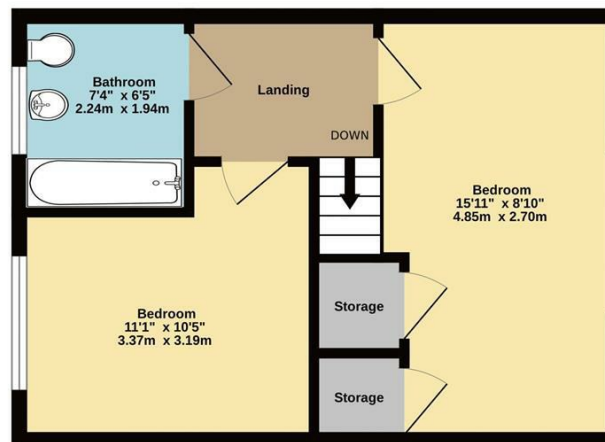
D



Ground Floor
340 sq.ft. (31.6 sq.m.) approx.

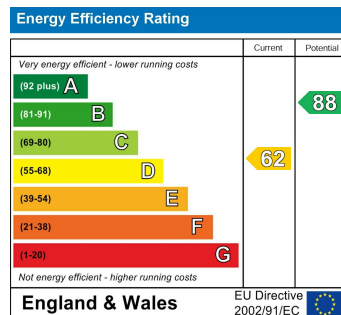


1st Floor
356 sq.ft. (33.0 sq.m.) approx.



TOTAL FLOOR AREA : 696 sq.ft. (64.7 sq.m.) approx.

Whilst every attempt has been made to ensure the accuracy of the floorplan contained here, measurements of doors, windows, rooms and any other items are approximate and no responsibility is taken for any error, omission or mis-statement. This plan is for illustrative purposes only and should be used as such by any prospective purchaser. The services, systems and appliances shown have not been tested and no guarantee as to their operability or efficiency can be given.
Made with Metropix ©2024



DIRECTIONS

CONTACT

Unit 1 Market Walk
Keynsham
Bristol
BS31 1FS

E: enquiries@gregorys.click
T: 01179 866644
gregorys.click



G R E G O R Y S
— E S T A T E A G E N T S —