



**4 Bed
House - Semi-
Detached
located in Hanham**

Asking Price £510,000



G R E G O R Y S
— E S T A T E A G E N T S —

112 Memorial Road
Hanham
Bristol
BS15 3LB



4

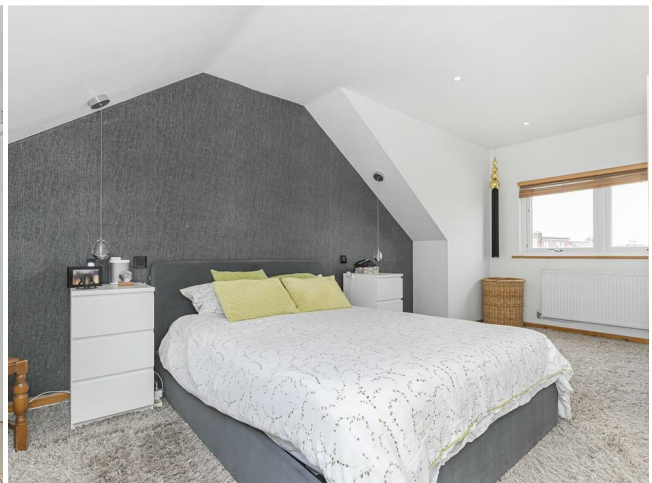


2

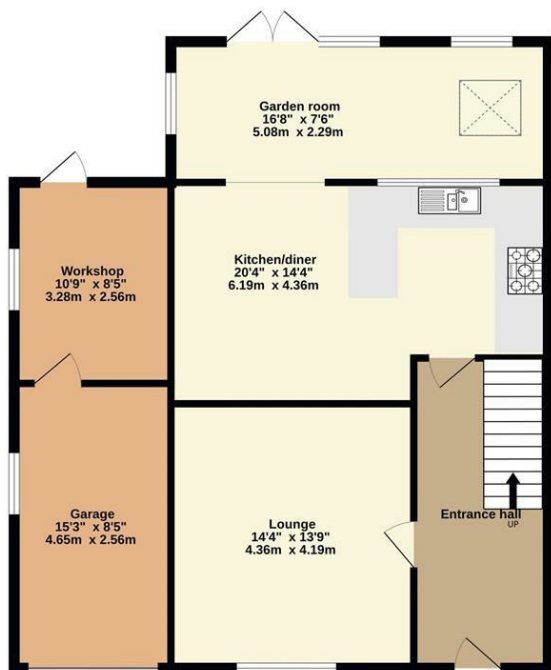


2

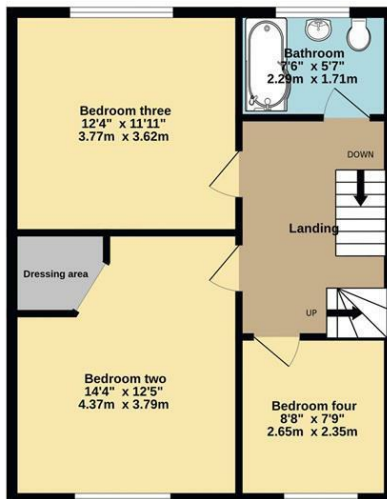




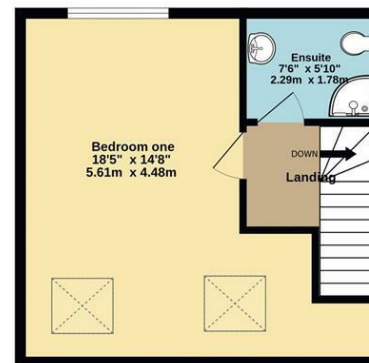
Ground Floor
898 sq.ft. (83.5 sq.m.) approx.



1st Floor
527 sq.ft. (49.0 sq.m.) approx.



2nd Floor
360 sq.ft. (33.4 sq.m.) approx.



TOTAL FLOOR AREA: 1785 sq.ft. (165.9 sq.m.) approx.

Whilst every attempt has been made to ensure the accuracy of the floorplan contained here, measurements of doors, windows, rooms and any other items are approximate and no responsibility is taken for any error, omission or mis-statement. This plan is for illustrative purposes only and should be used as such by any prospective purchaser. The services, systems and appliances shown have not been tested and no guarantee as to their operability or efficiency can be given.
Made with Metropix ©2024

Energy Efficiency Rating		
	Current	Potential
Very energy efficient - lower running costs		
(92 plus) A		
(81-91) B		
(69-80) C		
(55-68) D		
(39-54) E		
(21-38) F		
(1-20) G		
Not energy efficient - higher running costs		
England & Wales		
EU Directive 2002/91/EC		

DIRECTIONS

CONTACT

Unit 1 Market Walk
Keynsham
Bristol
BS31 1FS

E: enquiries@gregorys.click
T: 01179 866644
gregorys.click



GREGORYS
— ESTATE AGENTS —