

100 Trem Y Castell, Coity

£235,000 Freehold

LOUNGE • KITCHEN/DINER • DOWNSTAIRS WC • THREE BEDROOMS AND FAMILY BATHROOM • DRIVE AND ENCLOSED GARDEN • SITUATED IN THE POPULAR TAYLOR WIMPEY SITE • 360 TOUR A MUST TO VIEW • 4 YEARS REMAINING ON THE NHBC

DanielMatthew
ESTATE AGENTS



Three bed semi-detached on popular Taylor Wimpey site. Modern property-lounge, kitchen/dining room, cloakroom,driveway for two cars,enclosed garden,close to local amenities & M4.4Years NHBC remaining.

Council Tax band: C

Tenure: Freehold



- › LOUNGE
- › KITCHEN/DINER
- › DOWNSTAIRS WC
- › THREE BEDROOMS AND FAMILY BATHROOM
- › DRIVE AND ENCLOSED GARDEN
- › SITUATED IN THE POPULAR TAYLOR WIMPEY SITE
- › 360 TOUR A MUST TO VIEW
- › 4 YEARS REMAINING ON THE NHBC





Entrance

Enter via PVC door into the hallway, plain walls, plain ceiling, radiator, access to staircase and ground floor rooms.

Inner Hallway

Inner hallway with access to the WC and storage cupboard, plain walls and ceiling and laminate flooring.

WC

5' 10" x 3' 3" (1.78m x 0.98m)

Cloakroom with low level WC, pedestal wash hand basin, plain walls and ceiling, radiator and laminate flooring.

Lounge

11' 11" x 13' 7" (3.63m x 4.14m)

UPVC double glazed window to front aspect, plain walls, plain ceiling, radiator and laminate flooring.

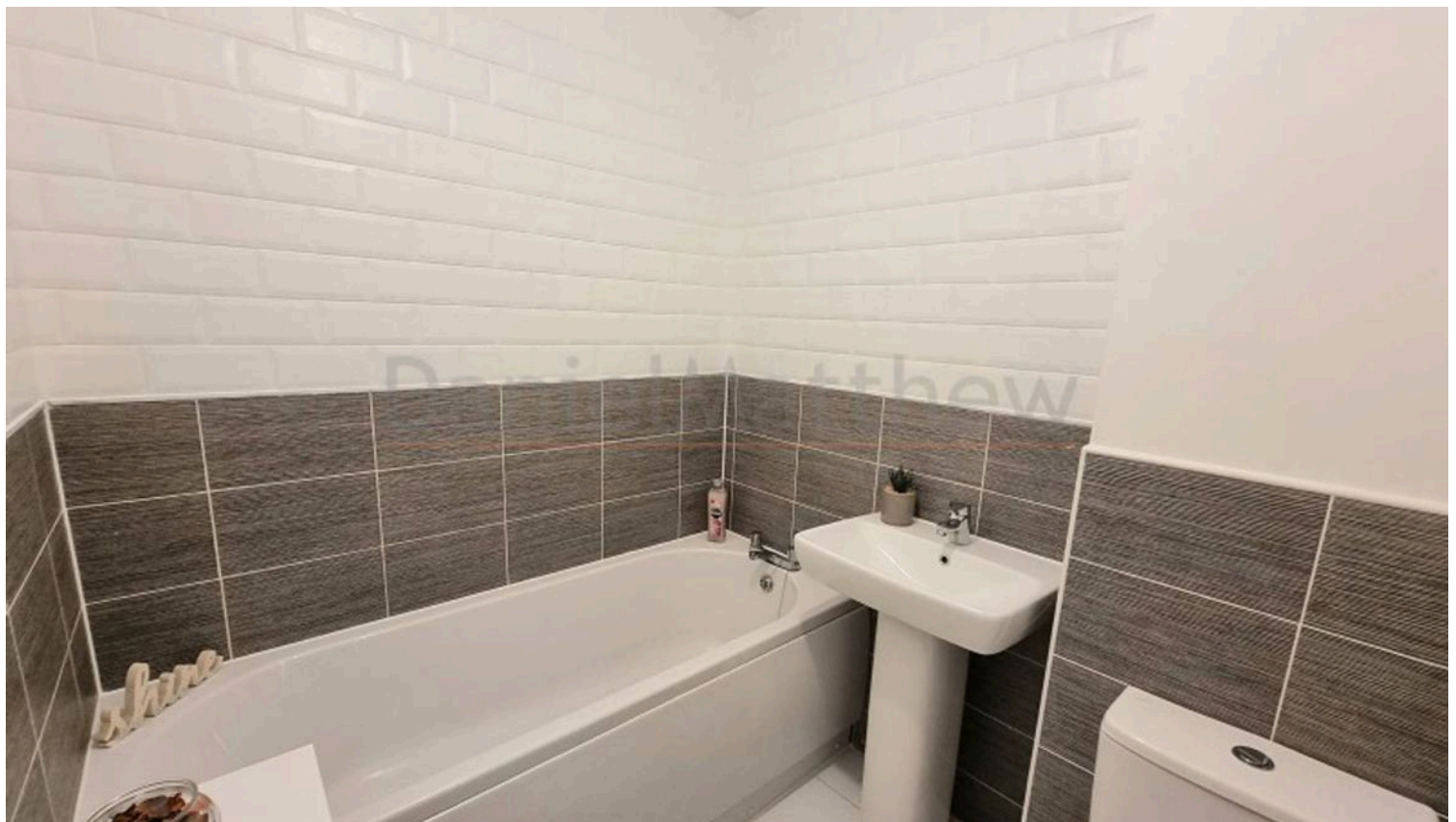
Kitchen/Diner

15' 5" x 9' 4" (4.71m x 2.84m)

upvc double glazed window. uPVC double glazed French Doors. Wood effect laminate worktop. Integral Stainless Steel electric oven, gas hob and wall mounted stainless steel extractor fan.

Landing

Landing with access to first floor rooms, plain walls and ceiling, carpet flooring and attic hatch.



Bedroom One

9' 8" x 9' 3" (2.95m x 2.81m)

UPVC double glazed window to front aspect, plain walls, plain ceiling, radiator and carpet flooring.

Ensuite

5' 6" x 5' 8" (1.67m x 1.72m)

En suite with a UPVC double glazed window, shower enclosure with thermostatic shower, low level WC, pedestal wash hand basin, plain walls and ceiling, radiator and laminate flooring.

Bedroom Two

8' 6" x 8' 3" (2.59m x 2.52m)

UPVC double glazed window to front aspect, plain walls, plain ceiling, radiator and carpet flooring.

Bedroom Three

6' 6" x 11' 5" (1.99m x 3.47m)

UPVC double glazed window to front aspect, plain walls, plain ceiling, radiator and carpet flooring.

Bathroom

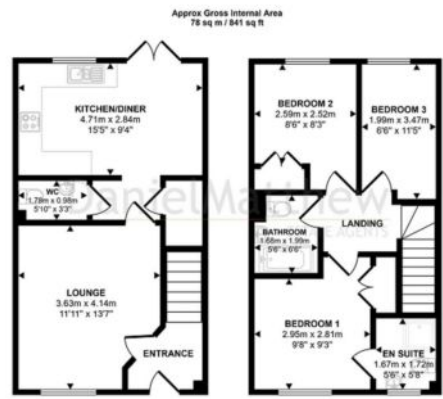
5' 6" x 6' 6" (1.68m x 1.99m)

Bathroom with a UPVC double glazed window, panel bath with mixer tap, low level WC, pedestal wash hand basin, plain walls and ceiling, radiator and laminate flooring.

Garden

REAR- Fence boundary with laid to patio and laid to Astroturf and shed to remain.

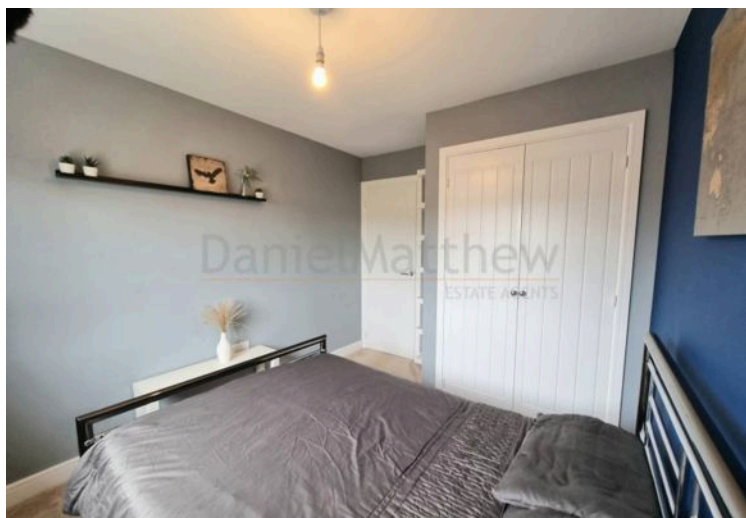




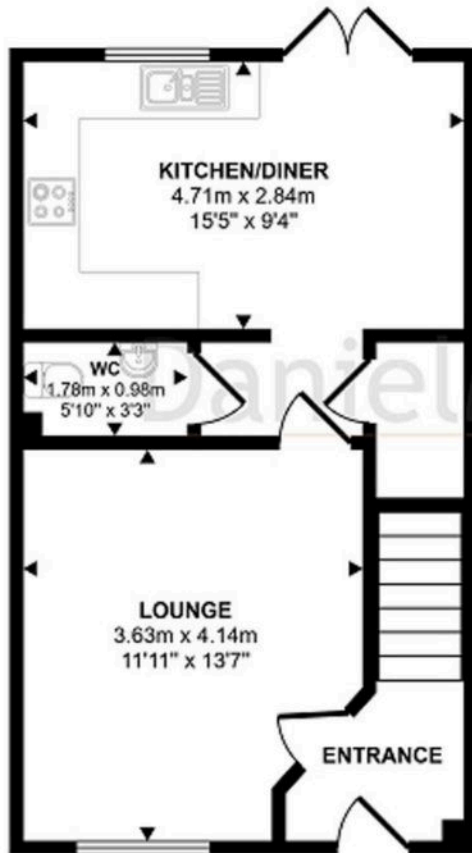
Ground Floor
Approx 39 sq m / 419 sq ft

First Floor
Approx 39 sq m / 422 sq ft

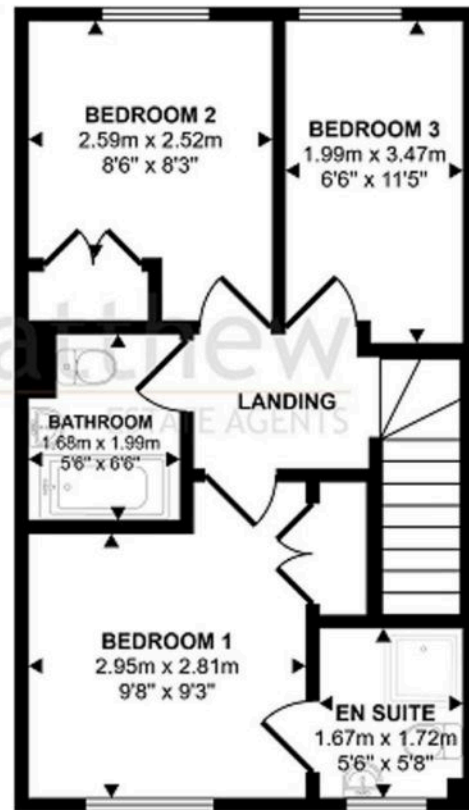
This floorplan is only for illustrative purposes and is not to scale. Measurements of rooms, doors, windows, and any items are approximate and no responsibility is taken for any error, omission or mis-statement. Icons of items such as bathroom suites are representations only and may not look like the real items. Made with Made Snappy 360.



Approx Gross Internal Area
78 sq m / 841 sq ft



Ground Floor
Approx 39 sq m / 419 sq ft



First Floor
Approx 39 sq m / 422 sq ft

This floorplan is only for illustrative purposes and is not to scale. Measurements of rooms, doors, windows, and any items are approximate and no responsibility is taken for any error, omission or mis-statement. Icons of items such as bathroom suites are representations only and may not look like the real items. Made with Made Snappy 360.

You can include any text here. The text can be modified upon generating your brochure.