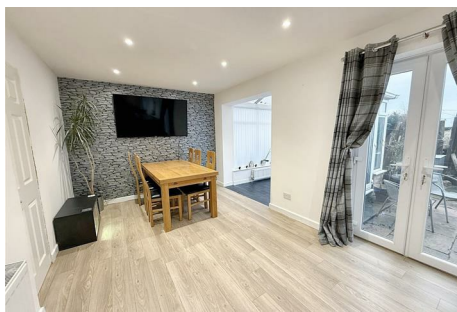


GILMORE ESTATES

Property Sales & Lettings



Cranleigh Grove

Prudhoe, Prudhoe, NE42 5QA

This delightful four-bedroom semi-detached house offers a perfect blend of comfort and convenience. Situated in a small cul-de-sac, the property enjoys a peaceful atmosphere while being just a stone's throw away from the town centre, making it an ideal location for families and professionals alike.

Upon entering, you will be greeted by a spacious and inviting layout. The house boasts two well-appointed bathrooms, ensuring ample facilities for the entire household. A highlight of the property is the dressing room, providing a touch of luxury and practicality for your daily routines.

The heart of the home is undoubtedly the conservatory, which floods the space with natural light and offers a serene spot to relax or entertain guests. The views to the front enhance the appeal, allowing you to enjoy the surrounding scenery from the comfort of your living space.

£225,000

Cranleigh Grove

Prudhoe, Prudhoe, NE42 5QA



- SEMI DETACHED HOUSE
- SPACIOUS DINING KITCHEN
- VIEWS TO FRONT ASPECT
- FOUR BEDROOMS
- CONSERVATORY
- DOUBLE DRIVEWAY
- MASTER DRESSING ROOM AND ENSUITE
- WOOD BURNING STOVE
- CLOSE TO TOWN CENTRE

Entrance Porch

6'5" x 3'10" (1.98 x 1.17)

Entrance Hallway

11'9" x 5'10" (3.59 x 1.78)

Cloaks WC

5'10" x 2'7" (1.79 x 0.79)

Lounge

14'1" x 10'5" (4.30 x 3.20)

Conservatory

9'7" x 7'8" (2.94 x 2.34)

Dining Kitchen

29'6" x 9'5" (9.00 x 2.89)

First Floor Landing

10'2" x 8'2" (3.10 x 2.50)

Bedroom One

11'5" x 11'7" (3.50 x 3.55)

Dressing Room

6'6" x 8'7" (2.00 x 2.64)

Ensuite

5'5" x 8'7" (1.67 x 2.63)

Bedroom Two

14'7" x 9'7" (4.47 x 2.93)

Bedroom Three

10'8" x 8'10" (3.27 x 2.71)

Bedroom Four

6'9" x 8'9" (2.08 x 2.69)

Bathroom

6'2" x 10'5" (1.88 x 3.19)

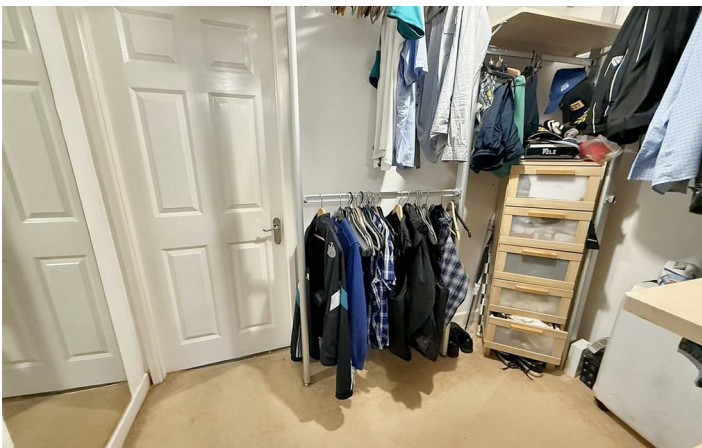
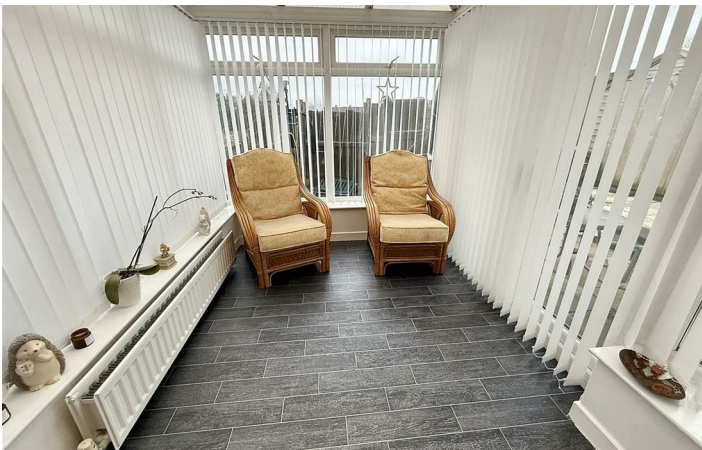
Garage

11'10" x 15'0" (3.63 x 4.58)

Garden

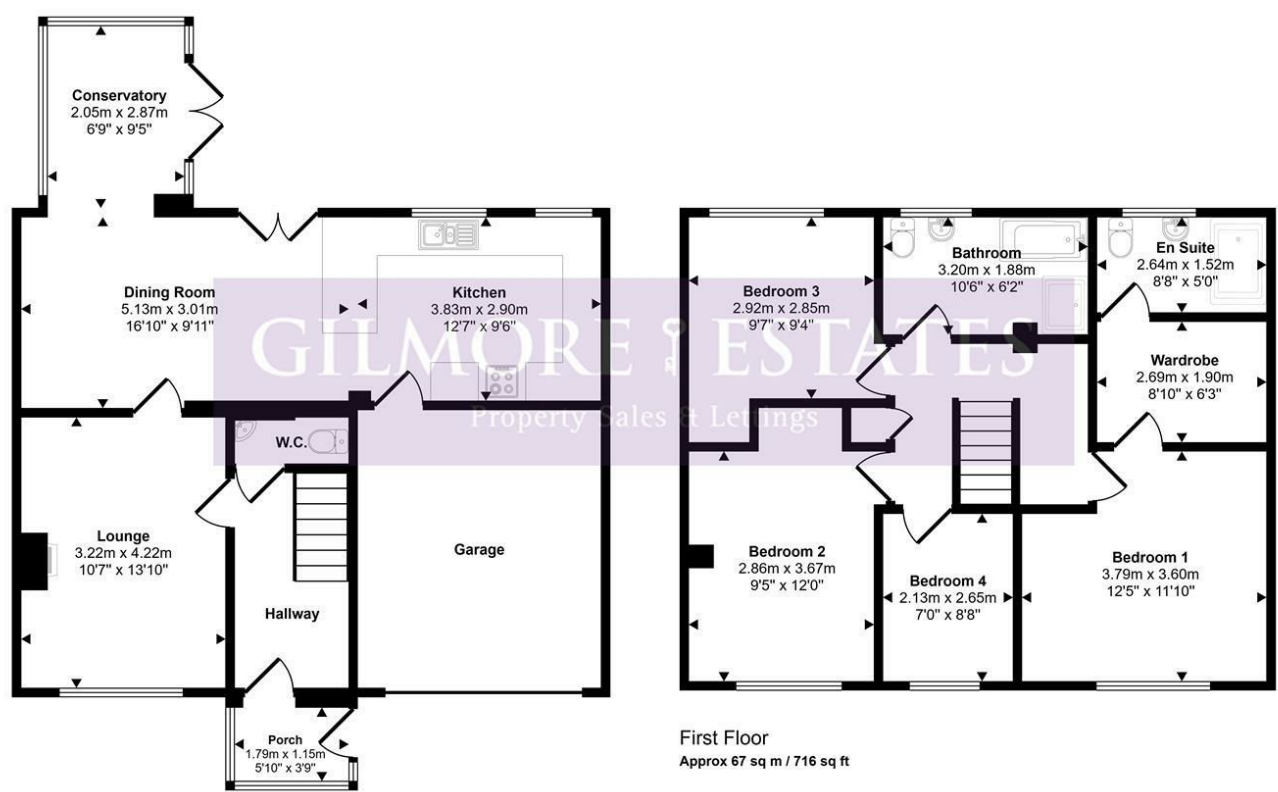


Directions



Floor Plan

Approx Gross Internal Area
142 sq m / 1526 sq ft



Ground Floor
Approx 75 sq m / 810 sq ft

First Floor
Approx 67 sq m / 716 sq ft

This floorplan is only for illustrative purposes and is not to scale. Measurements of rooms, doors, windows, and any items are approximate and no responsibility is taken for any error, omission or mis-statement. Icons of items such as bathroom suites are representations only and may not look like the real items. Made with Made Snappy 360.

These particulars, whilst believed to be accurate are set out as a general outline only for guidance and do not constitute any part of an offer or contract. Intending purchasers should not rely on them as statements of representation of fact, but must satisfy themselves by inspection or otherwise as to their accuracy. No person in this firms employment has the authority to make or give any representation or warranty in respect of the property.

