

GILMORE ESTATES

Property Sales & Lettings



Ottercops

, Prudhoe, NE42 6LQ

*** THREE BEDROOMS *** MID TERRACED HOUSE *** DOUBLE GLAZED WINDOWS *** GARDEN ***
GAS CENTRAL HEATING *** INVESTMENT OPPORTUNITY WITH CURRENT TENANTS ***

Investment opportunity for someone looking start or add to their portfolio. The property has current tenants in situ. The property is on coalfield.

EPC RATING A
COUNCIL TAX BAND C

£99,950

Ottercops

, Prudhoe, NE42 6LQ



- THREE BEDROOMS
- END TERRACE
- GAS CENTRAL HEATING
- FRONT AND REAR GARDENS
- DOUBLE GLAZED WINDOWS
- INVESTMENT OPPORTUNITY
- CURRENT TENANTS PAYING £585 PCM

ENTRANCE HALL

LOUNGE/DINING ROOM

11'6" x 24'5" (3.51 x 7.45)

KITCHEN

9'1" x 12'0" (2.78 x 3.68)

FIRST FLOOR LANDING

BATHROOM

8'5" x 6'5" (2.57 x 1.97)

BEDROOM ONE

12'11" x 8'9" (3.96 x 2.69)

BEDROOM TWO

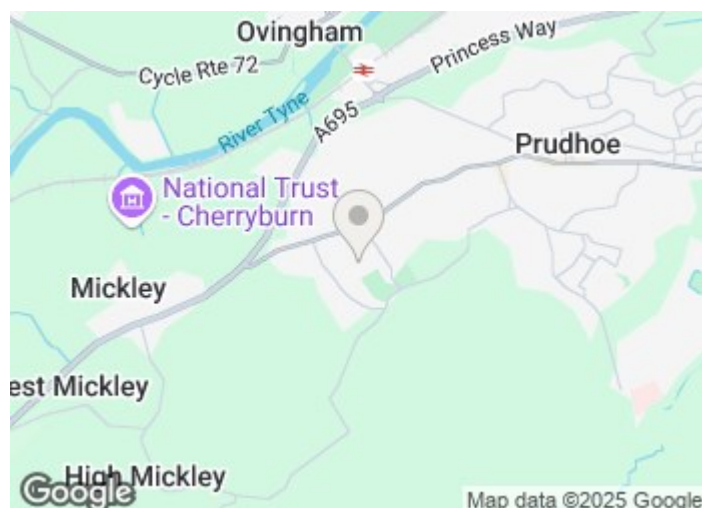
10'6" x 9'0" (3.22 x 2.76)

BEDROOM THREE

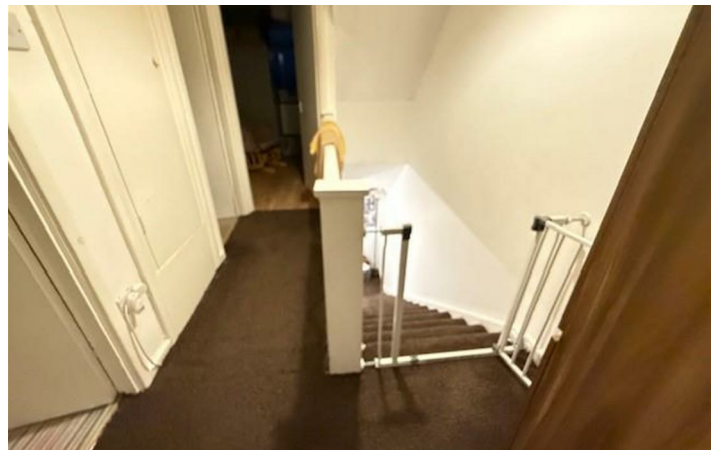
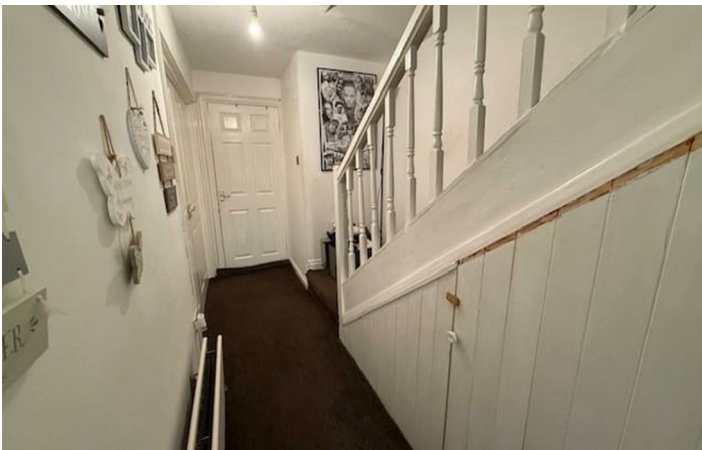
9'1" x 8'7" (2.79 x 2.64)

EXTERNALLY

GARAGE



Directions





Floor Plan

These particulars, whilst believed to be accurate are set out as a general outline only for guidance and do not constitute any part of an offer or contract. Intending purchasers should not rely on them as statements of representation of fact, but must satisfy themselves by inspection or otherwise as to their accuracy. No person in this firms employment has the authority to make or give any representation or warranty in respect of the property.

