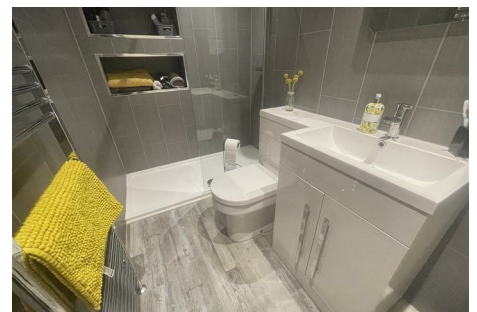


GILMORE ESTATES

Property Sales & Lettings



Woodburn Terrace , Prudhoe, NE42 6JX

**** END TERRACED HOUSE **** THREE BEDROOMS ***** MODERN DINING KITCHEN ***** CELLAR ROOM ****
UTILITY ROOM **** WC **** DOUBLE DRIVEWAY, STUNNING VIEWS **** CAN BE SOLD WITH NO UPPER CHAIN ****

CALCULATE YOUR MORTGAGE PAYMENTS HERE:

<https://dsly.co/fRNqleC>

Offers Over £155,000

Woodburn Terrace

, Prudhoe, NE42 6JX



- END TERRACED HOUSE
- CELLAR ROOM
- DRIVEWAY PARKING
- MODERN DINING KITCHEN
- UTILITY AND CLOAKS WC
- STUNNING VIEWS
- THREE BEDROOMS
- GCH / DOUBLE GLAZING

Entrance Hallway

16'1" x 3'1" (4.91 x 0.95)

Lounge

12'1" x 12'7" (3.69 x 3.86)

Dining Kitchen

12'11" x 13'6" (3.96 x 4.14)

Dining Area

7'4" x 5'9" (2.24 x 1.76)

Cellar Room

12'1" x 15'7" (3.69 x 4.75)

WC

4'6" x 5'10" (1.39 x 1.80)

Utility Room

8'4" x 5'11" (2.56 x 1.82)

First Floor Landing

5'6" x 16'5" (1.69 x 5.01)

Bedroom One

12'5" x 9'3" (3.80 x 2.82)

Bedroom Two

10'1" x 8'2" (3.08 x 2.49)

Bedroom Three

6'4" x 10'2" (1.94 x 3.12)

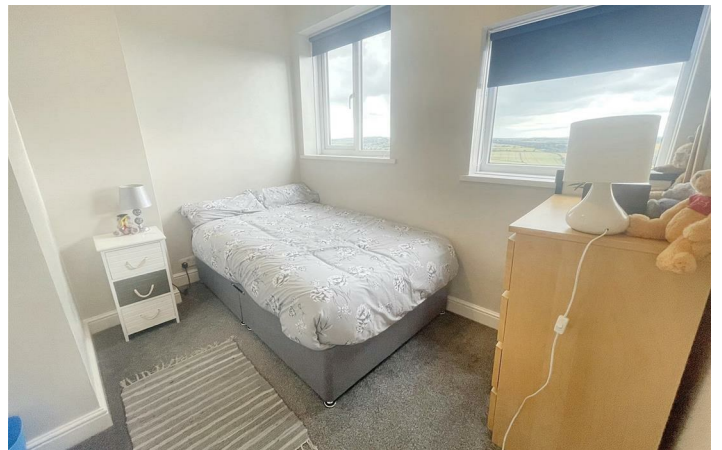
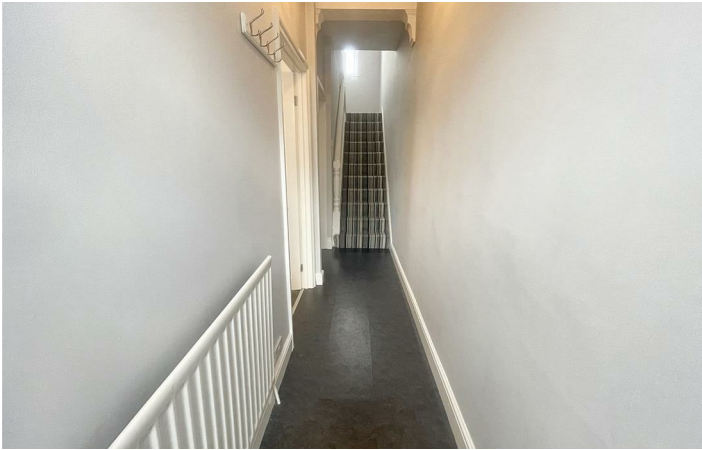
Shower Room

9'1" x 5'2" (2.79 x 1.60)

Externally

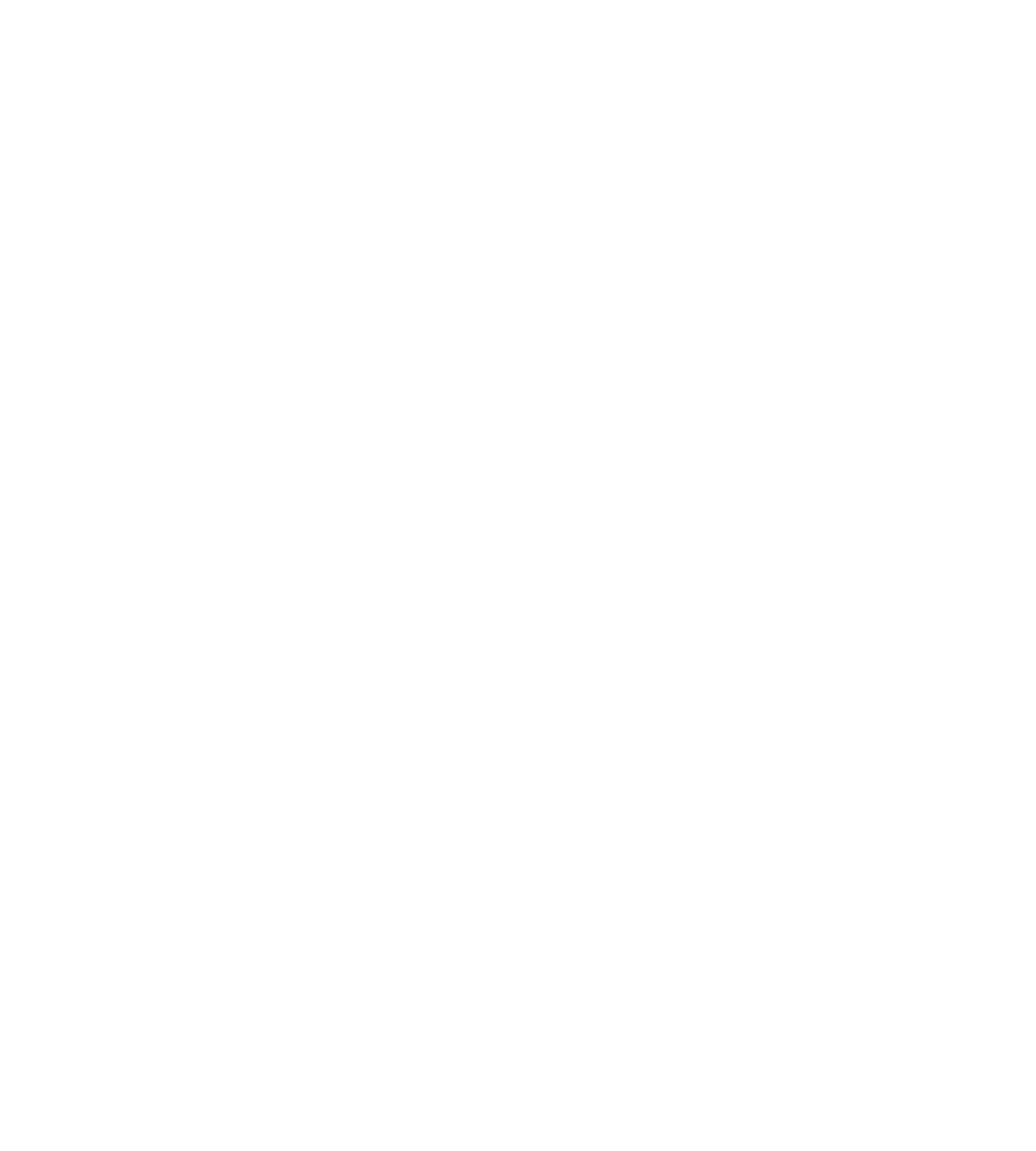


Directions





Floor Plan



These particulars, whilst believed to be accurate are set out as a general outline only for guidance and do not constitute any part of an offer or contract. Intending purchasers should not rely on them as statements of representation of fact, but must satisfy themselves by inspection or otherwise as to their accuracy. No person in this firms employment has the authority to make or give any representation or warranty in respect of the property.

