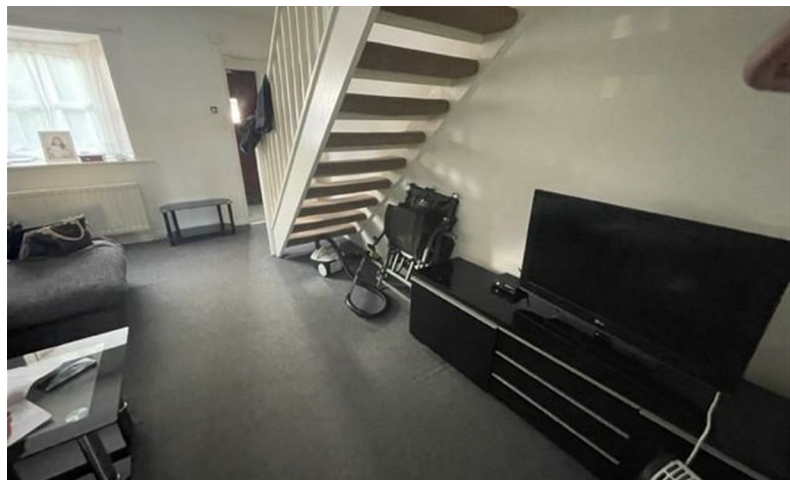


GILMORE ESTATES

Property Sales & Lettings



£105,000

, King Edward Road, , Ryton, , NE40 3EJ

16 King Edward Road, Ryton, NE40 3EJ

Welcome to King Edward Road, Ryton - a charming location for this delightful mid-terraced house built in 1990. This property boasts 786 sq ft of space, featuring 1 reception room, 2 bedrooms, and 1 bathroom.

Situated in a peaceful neighbourhood, this home offers a perfect blend of comfort and potential. With no onward chain, it provides a hassle-free opportunity to make it your own. Although it may need some cosmetic updating, this allows you the freedom to add your personal touch and truly make it your own.

The two bedrooms offer ample space for a small family, a couple, or even as a home office. The reception room is perfect for entertaining guests or simply relaxing after a long day.

Don't miss out on the chance to own this lovely property in Ryton. With its convenient location and cozy atmosphere, this house could be the perfect place for you to call home.

Porch

Lounge

16'4" x 12'4" (5.00 x 3.78)

Window to front aspect, central heating radiator and stairs to first floor

Kitchen

12'5" x 7'8" (3.81 x 2.36)

Window and door to rear, wall and base units with laminate work surfaces, electric cooker, stainless steel sink and drainer, plumbed for automatic washing machine

First Floor Landing

Bedroom One

12'4" x 8'9" (3.78 x 2.69)

Window to front aspect and central heating radiator

Bedroom Two

12'4" x 8'9" (3.78 x 2.69)

Window to rear and central heating radiator

Bathroom

Bath with shower over, WC, pedestal wash handbasin, central heating radiator and window to rear aspect

Externally

Garden to front and yard to rear

Credit References and Deposit

Prospective tenants will be required to complete a credit referencing application payable whether successful or not. Prior to taking occupation of the property you will be required to pay a deposit of 1½ times the monthly rent, the first months rent in advance and an administration fee.

Directions

