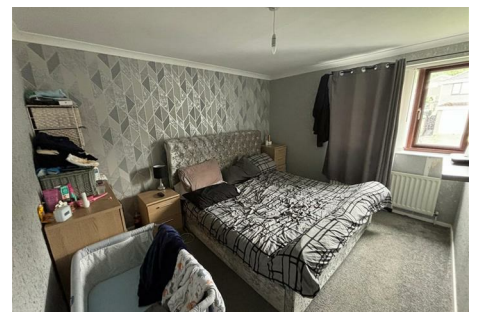
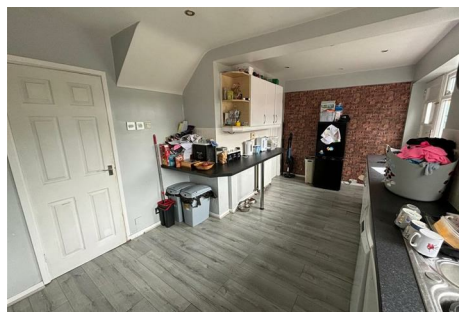


# GILMORE ESTATES

Property Sales & Lettings



## Castle Road , Prudhoe, NE42 6PW

\*\*\*\* FOUR BEDROOMS \*\*\* SEMI-DETACHED HOUSE \*\*\* DOUBLE GLAZED WINDOWS \*\*\* EN-SUITE \*\*\* GARAGE \*\*\* DRIVEWAY PARKING \*\*\*\* FRONT AND REAR GARDENS \*\*\* NO ONWARD CHAIN \*\*\*

A four bedroom semi-detached house situated on Castle Road, Prudhoe within walking distance of Prudhoe Castle First School, close to all local amenities and walking distance to Prudhoe train station. Accommodation briefly comprises :- Entrance porch, lounge, dining area, breakfasting kitchen, to the first floor there are four bedrooms (one with en-suite) and bathroom, Externally there are gardens to the front and rear and driveway leading to the garage.

EPC RATING TBC

COUNCIL TAX BAND C

**Offers Over £180,000**

# Castle Road

, Prudhoe, NE42 6PW



- FOUR BEDROOMS
- EN-SUITE TO BEDROOM
- NO ONWARD CHAIN
- SEMI-DETACHED HOUSE
- GARAGE
- GOOD ROAD/RAIL LINKS
- DOUBLE GLAZED WINDOWS
- FRONT AND REAR GARDENS

## ENTRANCE PORCH

## LOUNGE

18'0" x 13'1" (5.5 x 4)

## DINING AREA

8'6" x 10'9" (2.6 x 3.3)

## DINING KITCHEN

18'0" x 10'5" (5.5 x 3.2)

## TO THE FIRST FLOOR

## BATHROOM

8'6" x 5'2" (2.6 x 1.6)

## BEDROOM TWO

7'6" x 9'10" (2.3 x 3)

## EN-SUITE

## BEDROOM FOUR

9'10" x 11'5" (3 x 3.5)

## BEDROOM ONE

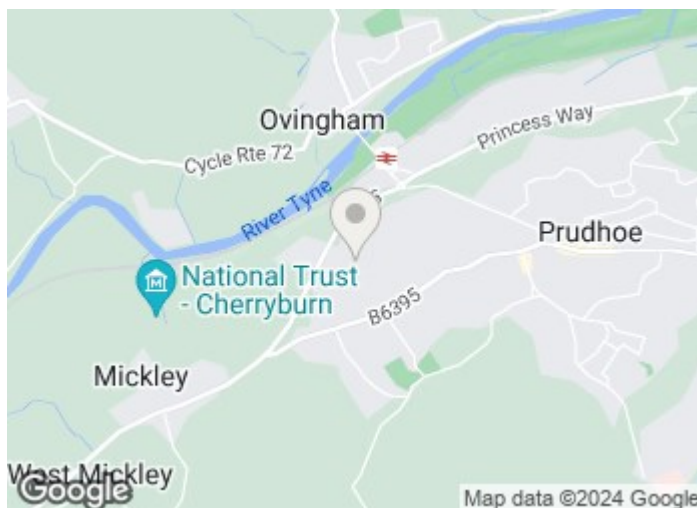
8'6" x 16'4" (2.6 x 5)

## BEDROOM THREE

9'10" x 11'9" (3 x 3.6)

## GARAGE

## EXTERNALLY

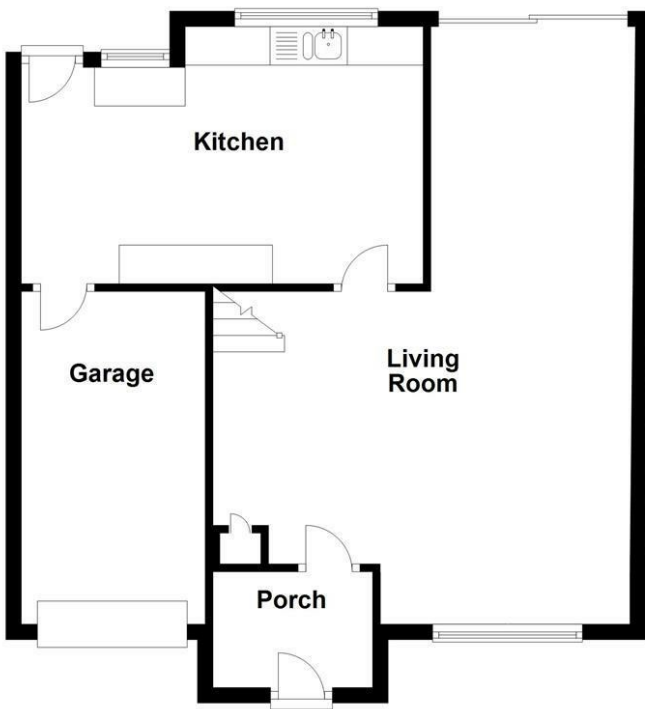


[Directions](#)

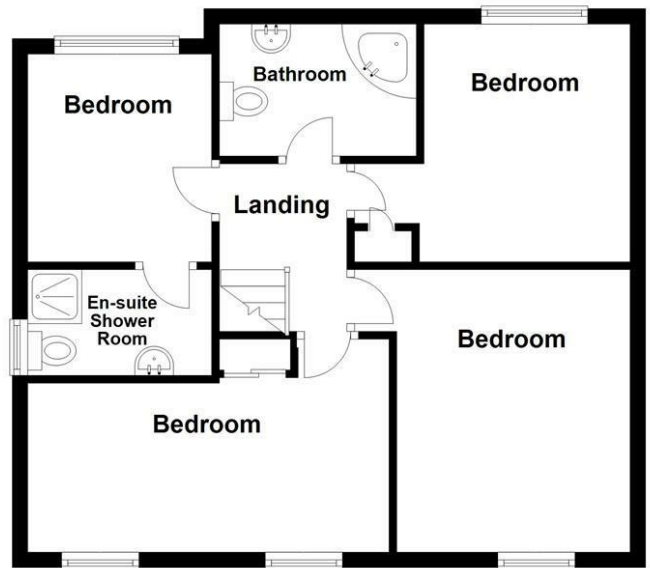


# Floor Plan

**Ground Floor**



**First Floor**



Total area: approx. 117.2 sq. metres (1261.5 sq. feet)

These particulars, whilst believed to be accurate are set out as a general outline only for guidance and do not constitute any part of an offer or contract. Intending purchasers should not rely on them as statements of representation of fact, but must satisfy themselves by inspection or otherwise as to their accuracy. No person in this firm's employment has the authority to make or give any representation or warranty in respect of the property.

