



£230,000 Freehold

3 ADAMS PARK WAY | KIRKBY-IN-ASHFIELD | NOTTINGHAM | NG17 8SS

**BuckleyBrown**  
ESTATE AGENTS



SPACIOUS AND STYLISH FAMILY HOME IN ADAMS PARK WAY!!!...Nestled in the sought-after Adams Park Way, this beautifully presented detached home combines style, comfort, and modern family living. The welcoming entrance leads into a light-filled lounge with dual-aspect windows and French doors that open onto the landscaped rear garden, creating a perfect space for both relaxation and entertaining.

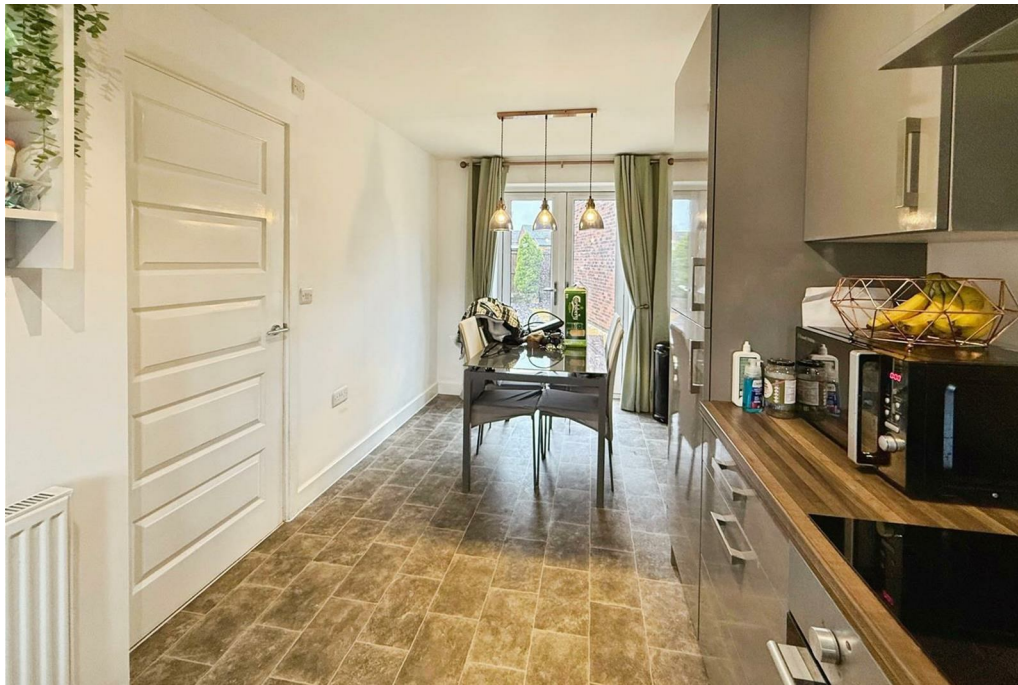
The contemporary kitchen/diner is designed with sleek high-gloss cabinetry and integrated appliances, offering a sociable space for family meals while enjoying views over the garden through its own set of French doors.

Upstairs, three generously sized bedrooms await, including a principal suite with a private en-suite, complemented by a stylish family bathroom.

Outside, the property features a decorative gravel frontage and a rear garden designed for enjoyment, with a central lawn, surrounding patio, and slate detailing, providing a tranquil backdrop for outdoor living.

A wonderful opportunity to secure a stylish and practical family home in a popular location – viewing is highly recommended.





#### Hall

Additional storage and access to;

#### Lounge

Carpeted flooring, dual aspect windows, one being a bay window, central heating radiator and French doors to the outside.

#### Kitchen/dinner

Laminate flooring, high gloss storage cupboards with work surfaces, integrated oven and hand wash basin, electric hob with extractor fan. above, an area to host a dining table and French doors to outside.

#### WC

Two-piece suite with laminate flooring, low flush toilet, hand wash basin and a central heating radiator.

#### Landing

Access to;

#### Bedroom One

Carpeted flooring, central heating radiator, additional storage cupboard and a window.

#### En suite

Three-piece suite with laminate flooring, low flush toilet, hand wash basin, walk-in shower, central heating radiator and a window.

#### Bedroom Two

Carpeted flooring, central heating radiator and a window.

#### Bedroom Three

Carpeted flooring, central heating radiator and a window.

#### Bathroom

Three-piece suite with laminate flooring, tiled walls, low flush toilet, hand wash basin, bath, central heating radiator and a window.



#### Outside

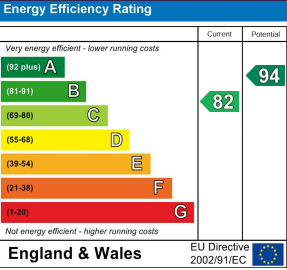
To the front displays loose gravel design. To the rear is loose slate sign with a lawn centerpiece and surround patio.







IMPORTANT: we would like to inform prospective purchasers that these sales particulars have been prepared as a general guide only. A detailed survey has not been carried out, nor the services, appliances and fittings tested. Room sizes should not be relied upon for furnishing purposes and are approximate. If floor plans are included, they are for guidance only and illustration purposes only and may not be to scale. If there are any important matters likely to affect your decision to buy, please contact us before viewing the property.





3 ADAMS PARK WAY  
KIRKBY-IN-ASHFIELD  
NOTTINGHAM  
NG17 8SS



## BuckleyBrown Estate Agents

55 - 57 Leeming Street | Mansfield | Nottinghamshire | NG18 1ND

23 High Street | Edwinstowe | Nottinghamshire | NG21 9QP

1 Market Place | Bolsover | Chesterfield | S44 6PN

[www.buckleybrown.co.uk](http://www.buckleybrown.co.uk)

t: 01623 633 633

t: 01623 633 633

t: 01246 605121

**BuckleyBrown**  
ESTATE AGENTS

**IMPORTANT:** we would like to inform prospective purchasers that these sales particulars have been prepared as a general guide only. A detailed survey has not been carried out, nor the services, appliances and fittings tested. Room sizes should not be relied upon for furnishing purposes and are approximate. If floor plans are included, they are for guidance only and illustration purposes only and may not be to scale. If there are any important matters likely to affect your decision to buy, please contact us before viewing the property.