



FOX MEADOW | HUCKNALL | NOTTINGHAM | NG15 6UZ

**BuckleyBrown**  
ESTATE AGENTS



CHAIN FREE.. INCREDIBLE FAMILY HOME!.. Words truly aren't enough to describe this spacious, private, and absolutely stunning detached family home. Located within Hucknall, and positioned nearby to a range of great, shops, schools, and commuter links, this exceptional property offers the perfect combination of convenience and luxury, and has been kept to an impeccable standard throughout.

You'll be welcomed to an incredible ground floor that presents ample space for the whole family to enjoy. The kitchen is equipped with a stunning range of shaker-style units and integrated appliances, along with ample dining space and doors leading out to the rear garden. Perfect for practising your cooking skills! There's also a separate dining room, ideal for more formal occasions, and this leads nicely into the family living room where you'll find a beautiful feature fireplace that lends itself perfectly to cosy nights in. This space is bright and airy, and leads nicely into the conservatory that is equally as spacious and versatile, with terrific views over the garden. Furthermore, there's an additional lounge/bedroom, along with a handy utility and shower room!

The first floor hosts four superb bedrooms, all of which offer an abundance of space, along with their own fitted wardrobes for added convenience and luxury. There's also lots of versatility to add your own stamp. The family bathroom can also be found off the landing, and comprises of a fabulous four-piece suite where you can relax after a long day.

The garden is an impressive extension of the property, boasting excellent privacy, and a spacious patio seating area perfect for outdoor dining and entertaining. There's an extensive, well-maintained lawn, along with a wealth of surrounding mature shrubs and trees, and a beautiful stream! If that's not enough, the front of the property benefits from ample off-road parking space, and a detached double garage with space for additional parking and/or secure storage.





### Entrance Hall

With fitted carpets, central heating radiators, downlights, stairs leading up to the first floor, and access into;

### Kitchen 10'8" x 17'5"

Complete with a modern range of shaker-style wall and base units with complementary worktop over, inset sink and drainer with mixer tap, tiled splash backs, integrated eye level double oven, integrated fridge-freezer, ample dining space, downlights, central heating radiator, window to the side elevation, and sliding doors leading out to the garden.

### Utility 8'1" x 9'10"

Complete with a range of matching units with worktop over, inset sink and drainer with mixer tap, tiled splash backs, space and plumbing for a washing machine and dishwasher, window to the rear elevation, and a door leading outside.

### Dining Room 12'2" x 14'9"

With fitted carpets, central heating radiator, and bay window to the side elevation. With open access through to;

### Living Room 14'2" x 11'8"

With fitted carpets, feature fireplace, central



heating radiator, and window to the front elevation. With sliding doors leading into;

### Conservatory 12'11" x 8'0"

With fitted carpets, central heating radiator, windows surrounding the garden, and patio doors leading outside.

### Bedroom Five/Lounge 12'7" x 8'4"

With fitted carpets, central heating radiator, and bay window to the side elevation.

### Shower Room 5'6" x 6'2"

Complete with a fitted walk-in shower cubicle, low flush WC, vanity hand wash basin, downlights, and opaque window to the rear elevation.

### Landing

With fitted carpets, central heating radiator and downlights. With access into;

### Bedroom One 14'3" x 23'11"

With fitted carpets, fitted wardrobes, central heating radiator, and dual aspect windows to the front and side elevation.

### Bedroom Two 9'2" x 16'6"

With fitted carpets, fitted wardrobe, central heating radiator, and dual aspect windows to the side and rear elevation.





### Bedroom Three 14'2" x 11'8"

With fitted carpets, fitted wardrobes, central heating radiator, and window to the side elevation.

### Bedroom Four 10'7" x 7'0"

With fitted carpets, central heating radiator, and window to the side elevation.

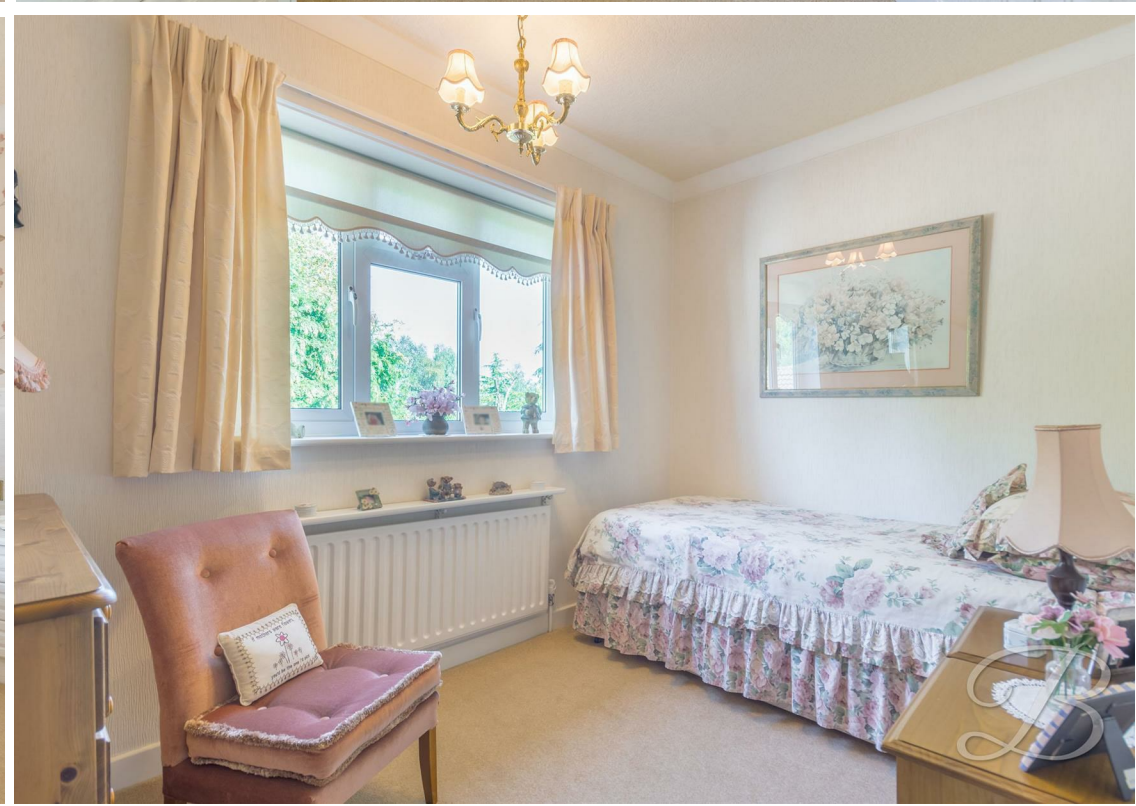
### Bathroom 11'4" x 8'3"

Complete with a fitted bath with overhead shower, low flush WC, hand wash basin, fitted vanity unit, central heating radiator, and opaque window to the side elevation.

### Outside

Featuring a private, spacious, and beautifully maintained wrap-around garden with a generous patio seating area, an extensive lawn, a wide range of mature surrounding shrubs and trees, and a lovely stream. To the front of the property is a gated driveway, allowing space for ample off-road parking, alongside a double garage (2.29 x 7.54) with space for both additional parking and/or secure storage.







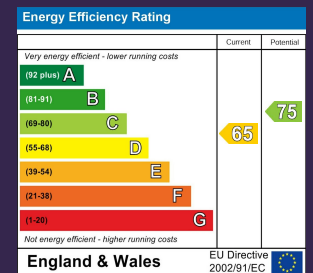






Whilst every attempt has been made to ensure the accuracy of the floor plan contained here, no responsibility is taken for incorrect measurements of doors, windows, appliances and room or any error, omission or misstatement. Exterior and interior walls are drawn to scale based on interior measurements. Any figure given is for initial guidance only and should not be relied on as basis of valuation. These plans are for marketing purposes only and should be used as such by any prospective purchase. Specifically no guarantee is given on the total square footage of the property if quoted on this plan.  
CC Ltd ©2018

**IMPORTANT:** we would like to inform prospective purchasers that these sales particulars have been prepared as a general guide only. A detailed survey has not been carried out, nor the services, appliances and fittings tested. Room sizes should not be relied upon for furnishing purposes and are approximate. If floor plans are included, they are for guidance only and illustration purposes only and may not be to scale. If there are any important matters likely to affect your decision to buy, please contact us before viewing the property.





FOX MEADOW  
HUCKNALL  
NOTTINGHAM  
NG15 6UZ



BuckleyBrown Estate Agents  
55- 57 Leeming Street | Mansfield | Nottinghamshire | NG18 1ND  
t: 01623 633633 | [mansfield@buckleybrown.co.uk](mailto:mansfield@buckleybrown.co.uk) | [www.buckleybrown.co.uk](http://www.buckleybrown.co.uk)

IMPORTANT: we would like to inform prospective purchasers that these sales particulars have been prepared as a general guide only. A detailed survey has not been carried out, nor the services, appliances and fittings tested. Room sizes should not be relied upon for furnishing purposes and are approximate. If floor plans are included, they are for guidance only and illustration purposes only and may not be to scale. If there are any important matters likely to affect your decision to buy, please contact us before viewing the property.

**BuckleyBrown**  
ESTATE AGENTS