



£120,000 Leasehold

8 LIMESTONE RISE | | MANSFIELD | NG19 7AZ

BuckleyBrown
ESTATE AGENTS

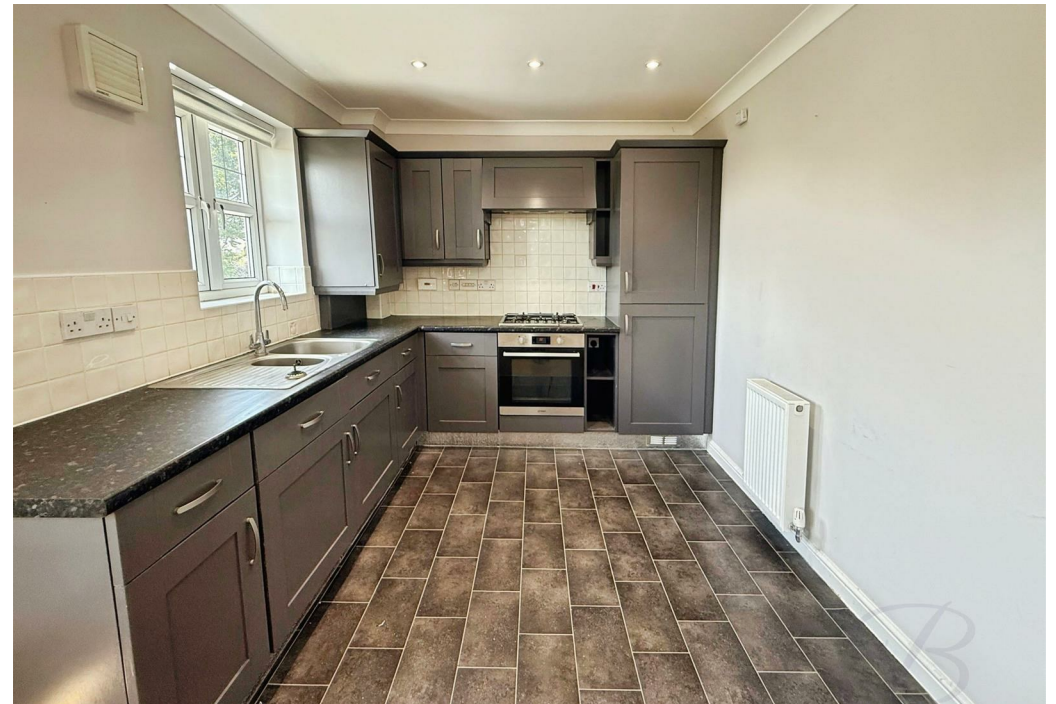
Stylish Contemporary Living!

If you're seeking a home that blends modern style with everyday convenience, this beautifully presented second-floor apartment is sure to impress. Ideally located within easy reach of the town centre and a range of local amenities, it's a perfect choice for young professionals or those looking to downsize without compromising on quality.

Inside, the apartment boasts a bright and airy layout with neutral décor throughout, creating a welcoming sense of space. A communal entrance leads to the private hallway, which connects to two generously sized bedrooms and a sleek, modern bathroom complete with a white suite.

The standout feature of this home is the impressive open-plan kitchen, dining, and living area—ideal for both relaxing and entertaining. The kitchen is fitted with contemporary units and includes a range of integrated appliances, while the living space is centred around an eye-catching feature fireplace.

Additional benefits include an allocated parking space and a well-maintained communal area, making this stylish apartment as practical as it is attractive.





Entrance Hall
Giving access to;

Kitchen

Complete with a range of matching wall and base units with complimentary work surface over, integrated oven with gas hob and extractor hood over, integrated fridge freezer, one and a half bowl sink with mixer tap over, vinyl flooring, central heating radiator and window to front elevation.

Lounge

With laminate flooring, central heating radiator, two windows to front elevation and boasts a feature fireplace.

Bedroom One

With carpet flooring, central heating

radiator, window to side elevation and fitted wardrobes.

Bedroom Two

With carpet flooring, central heating radiator and window to side elevation.

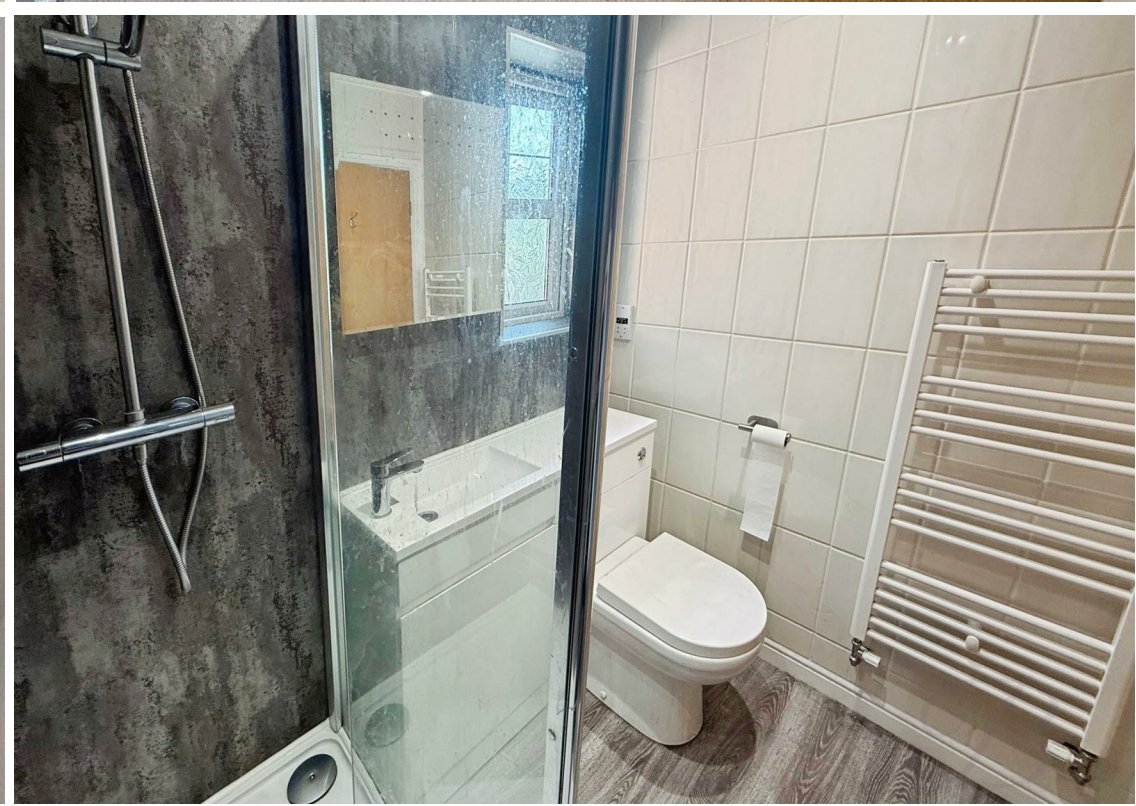
Shower Room

Complete with a three piece suite comprising of a walk in shower, vanity housing a low flush wc and wash hand basin. Window to side elevation and with heated towel rail.

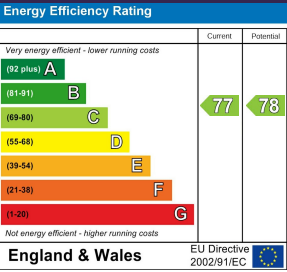
Outside

The property comes with a parking space.





IMPORTANT: we would like to inform prospective purchasers that these sales particulars have been prepared as a general guide only. A detailed survey has not been carried out, nor the services, appliances and fittings tested. Room sizes should not be relied upon for furnishing purposes and are approximate. If floor plans are included, they are for guidance only and illustration purposes only and may not be to scale. If there are any important matters likely to affect your decision to buy, please contact us before viewing the property.



8 LIMESTONE RISE
MANSFIELD
NG19 7AZ



BuckleyBrown Estate Agents
55- 57 Leeming Street | Mansfield | Nottinghamshire | NG18 1ND
t: 01623 633633 | mansfield@buckleybrown.co.uk | www.buckleybrown.co.uk

IMPORTANT: we would like to inform prospective purchasers that these sales particulars have been prepared as a general guide only. A detailed survey has not been carried out, nor the services, appliances and fittings tested. Room sizes should not be relied upon for furnishing purposes and are approximate. If floor plans are included, they are for guidance only and illustration purposes only and may not be to scale. If there are any important matters likely to affect your decision to buy, please contact us before viewing the property.

BuckleyBrown
ESTATE AGENTS