



£180,000

DEWBERRY GARDENS | FOREST TOWN | MANSFIELD | NG19 0RG

BuckleyBrown
ESTATE AGENTS

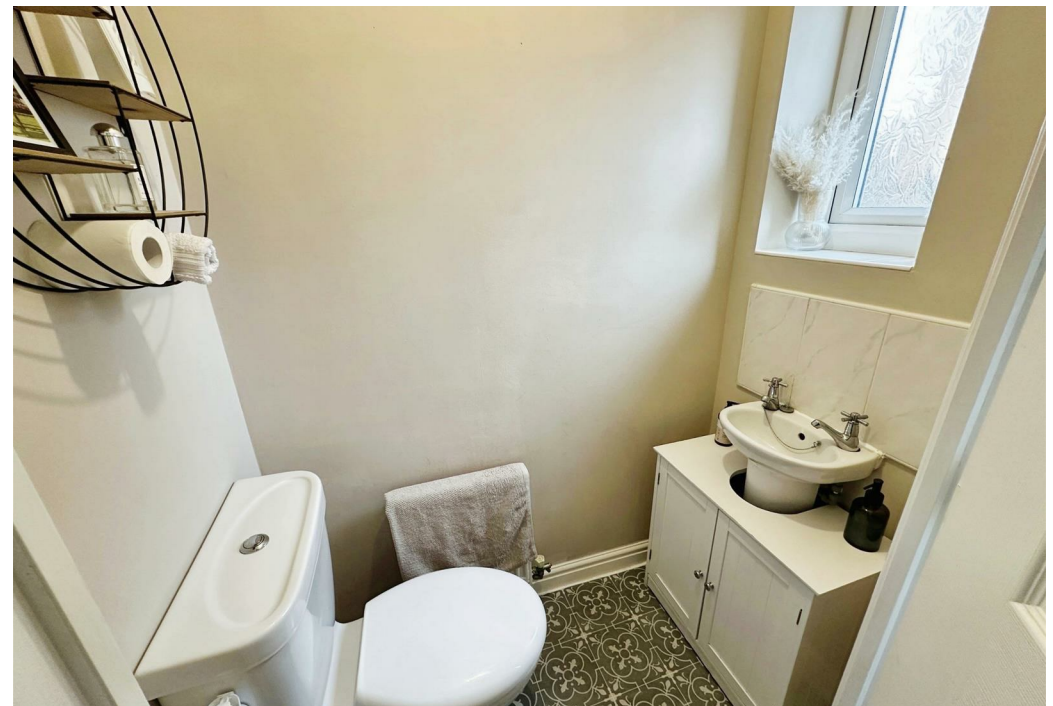
PICTURE PERFECT!!!...This three bedroom family home is a true gem and we can't wait to show you around. Boasting a spacious and well-presented interior, this detached property has room for the whole family, with a spacious garden and modern fixtures and fittings throughout. You simply must view this one for yourself! Let's take a peek inside..

Starting with the kitchen which offers a range of matching units and appliances, making it simple to show off your culinary skills. There's a fabulous lounge area to relax and put your feet up with patio doors to the rear elevation, giving access to the garden, perfect for entertaining throughout the summer months. There is also further space for dining furniture. Additionally, the ground floor features a WC for added convenience.

The first floor hosts three generous sized bedrooms, all of which have been well cared for, with plenty of space versatility. Furthermore, the family bathroom can be found just off the landing and complete with a three piece suite. What's not to love?

The garden really is something special, generous and private, with a both patio and decked seating areas. Perfect for inviting the whole family around and enjoying the sunny months together with a BBQ. There is also an allocated parking space to the rear for added convenience.

Call now to arrange a viewing!





Living Room

Spacious living area with a feature fireplace and floor to ceiling windows to the rear elevation along with patio doors giving access to the rear garden.

Kitchen

Complete with a range of matching cabinets, inset sink and drainer, integrated appliances. There is also further space and plumbing for a washing machine/tumble dryer and fridge freezer. With a window to the front elevation.

WC

Fitted with a low flush WC, hand wash basin and a window to the front elevation.

Bedroom One

With carpeted flooring, central heating radiator and windows to the front.

Bedroom Two

With carpeted flooring, central heating radiator and a window.

Bedroom Three

With carpeted flooring, central heating radiator and a window.

Bathroom

Three piece suite comprising of a hand wash basin, low flush WC, bath and window.

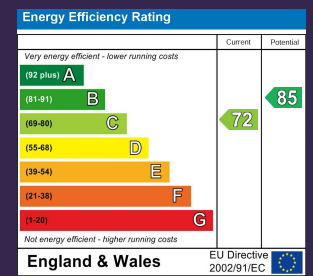
Outside

Low maintenance frontage. To the rear there is a well established garden with a well kept lawn and both patio and decked seating areas. There is also an allocated parking space.





IMPORTANT: we would like to inform prospective purchasers that these sales particulars have been prepared as a general guide only. A detailed survey has not been carried out, nor the services, appliances and fittings tested. Room sizes should not be relied upon for furnishing purposes and are approximate. If floor plans are included, they are for guidance only and illustration purposes only and may not be to scale. If there are any important matters likely to affect your decision to buy, please contact us before viewing the property.



DEWBERRY
GARDENS | FOREST
TOWN | MANSFIELD | NG19
0RG



BuckleyBrown Estate Agents
55- 57 Leeming Street | Mansfield | Nottinghamshire | NG18 1ND
t: 01623 633633 | mansfield@buckleybrown.co.uk | www.buckleybrown.co.uk

IMPORTANT: we would like to inform prospective purchasers that these sales particulars have been prepared as a general guide only. A detailed survey has not been carried out, nor the services, appliances and fittings tested. Room sizes should not be relied upon for furnishing purposes and are approximate. If floor plans are included, they are for guidance only and illustration purposes only and may not be to scale. If there are any important matters likely to affect your decision to buy, please contact us before viewing the property.

BuckleyBrown
ESTATE AGENTS