



SHERWOOD STREET | NEWTON | ALFRETON | DE55 5SE

BuckleyBrown
ESTATE AGENTS

LOOKS LIKE HOME! This three-bedroom semi-detached home is pleasantly situated in Newton, with a driveway offering convenient off-street parking and a delightful rear garden. Boasting an abundance of space for you to enjoy. Not only that, but the interior is equally wonderful. Presenting neutral decor throughout and a high quality presentation. This property also benefits from great transport links, is ideally located close to local amenities and schools, making it a perfect family home!

As you walk through, you will find the light and airy living room, which hosts a great area for entertaining with plenty of room for you to enjoy with family and friends. Together with windows filling this space with natural light and complementary flooring adding a lovely finish. From here you'll be lead nicely to the open-plan kitchen/diner which is fitted with a stunning range of matching cabinets and units, work surface and an inset sink, and integrated appliances. The dining area hosts the perfect layout for dinner parties and entertaining guests. The ground floor is complete with a WC, comprising a cloakroom, WC and hand wash basin. Impressed so far? Let's head upstairs where the excitement will continue!

Heading upstairs you will find three versatile bedrooms, all of which have been lovingly maintained and present the ideal spot for unwinding. The master is located on the second floor and comprises a private ensuite for added privacy. The spacious landing in-turn provides access to a fabulous bathroom fitted with a modern four-piece suite including a separate shower cubicle.

Outside offers ample off road parking to the front, There will also be decking with steps leading onto the garden with fence surrounding. Like what you see? Call now to arrange a viewing!





Hall

With access to;

Living Room 8'7" x 15'5"

With window to front elevation.

Dining Room 10'0" x 14'9"

With access to;

Kitchen 8'9" x 11'3"

Complete with a modern range of matching units and cabinetry, with complementary work surface over and inset sink. With french doors to rear elevation.

Utility 6'0" x 11'3"

With units for storage and space for a washing machine. With door to rear elevation.

WC

Including hand wash basin and low flush WC.

Landing

With access to;

Bedroom One 11'7" x 15'5"

With window to side elevation and skylight to rear elevation.

Bedroom Two 8'7" x 14'7"

With window to front elevation.

Bedroom Three 8'7" x 12'4"

With window to rear elevation.

Ensuite 5'10" x 6'2"

Including a three-piece suite.

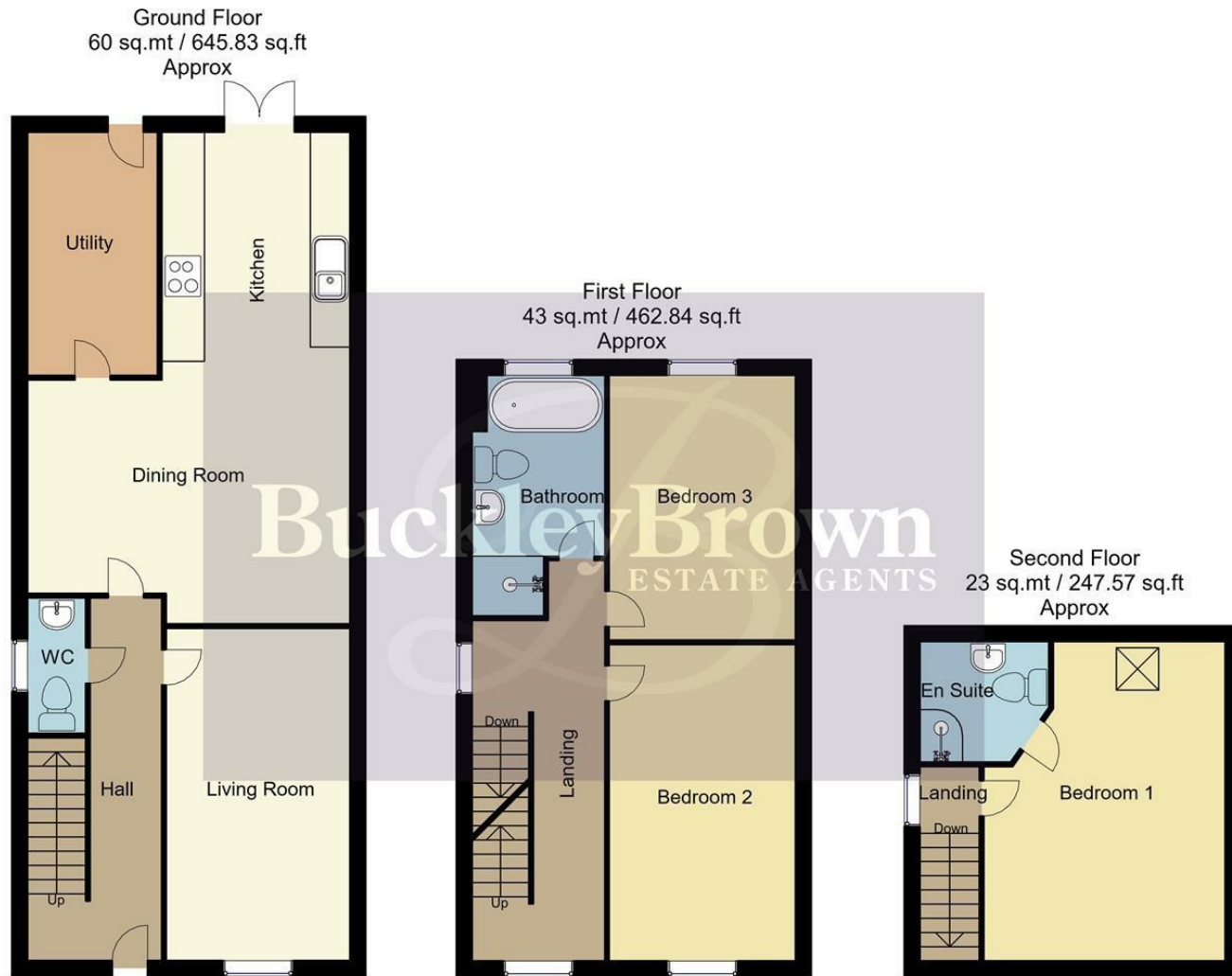
Bathroom 6'2" x 11'6"

Including a four-piece suite with window to rear elevation.

Outside

With parking to the front of the property for two vehicles. Including an enclosed garden to the rear.





Whilst every attempt has been made to ensure the accuracy of the floor plan contained here, no responsibility is taken for incorrect measurements of doors, windows, appliances and room or any error, omission or misstatement. Exterior and interior walls are drawn to scale based on interior measurements. Any figure given is for initial guidance only and should not be relied on as basis of valuation. These plans are for marketing purposes only and should be used as such by any prospective purchase. Specially no guarantee is should not be relied on as a basis of valuation. These plans are for marketing purposes only and should be used as such by any prospective purchase. Specially no guarantee is given on the total square footage of the property if quoted on this plan.
CC Ltd ©2018

IMPORTANT: we would like to inform prospective purchasers that these sales particulars have been prepared as a general guide only. A detailed survey has not been carried out, nor the services, appliances and fittings tested. Room sizes should not be relied upon for furnishing purposes and are approximate. If floor plans are included, they are for guidance only and illustration purposes only and may not be to scale. If there are any important matters likely to affect your decision to buy, please contact us before viewing the property.

Energy Efficiency Rating		Current	Potential
Very energy efficient - lower running costs			
(92 plus) A			
(81-91) B			
(69-80) C			
(55-68) D			
(39-54) E			
(21-38) F			
(1-20) G			
Not energy efficient - higher running costs			
England & Wales		EU Directive 2002/91/EC	

SHERWOOD STREET
NEWTON
ALFRETON
DE55 5SE



BuckleyBrown Estate Agents
55- 57 Leeming Street | Mansfield | Nottinghamshire | NG18 1ND
t: 01623 633633 | mansfield@buckleybrown.co.uk | www.buckleybrown.co.uk



IMPORTANT: we would like to inform prospective purchasers that these sales particulars have been prepared as a general guide only. A detailed survey has not been carried out, nor the services, appliances and fittings tested. Room sizes should not be relied upon for furnishing purposes and are approximate. If floor plans are included, they are for guidance only and illustration purposes only and may not be to scale. If there are any important matters likely to affect your decision to buy, please contact us before viewing the property.