

£100,000

PARKERS LANE | MANSFIELD WOODHOUSE | MANSFIELD | NG19 8AT

BuckleyBrown
ESTATE AGENTS

SOLD WITH A TENANT IN SITU... This refurbished, one bedroom, top floor apartment is portfolio ready and offers a 7.8% yield to sell. It is not until you step inside this apartment that the true size of the well planned accommodation can truly be appreciated and we strongly advise an early viewing.

As you walk through the entrance hallway you will be invited into a spacious open plan lounge/kitchen which is of a brilliant size and benefits from two windows to the front allowing for ample natural light to flood through. The kitchen comes complete with a wall and base units with work surface incorporating sink and drainer and integrated appliances. Moving from here you will find a generous bedroom and a bathroom. This property also benefits from communal gardens and gated parking. Don't miss out, call now to arrange a viewing!

Agent note

The property is being sold with a tenant in situ, please speak with one of our negotiator for further information.

Entrance Hall

With laminate flooring and electric radiator.

Open Plan Kitchen Lounge

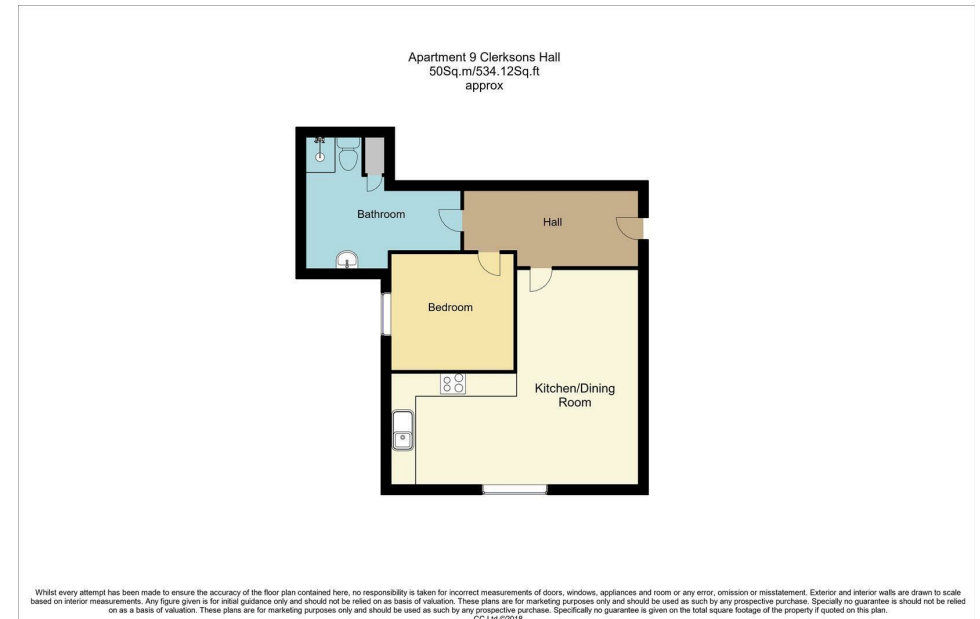
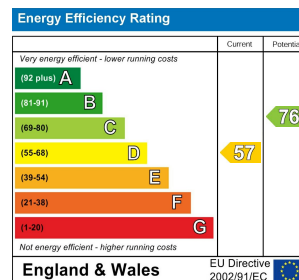
Complete with stunning, grey wall, base and drawer units and white work surfaces above. There is integrated appliances including an oven, hob and fridge freezer. The room is finished with laminate flooring, two electric radiators, vaulted ceiling and a window.

Bedroom

With laminate flooring, electric radiator and two velux windows.

Shower Room

Fitted with a modern shower suite comprising a glass shower cubicle, low flush WC and wash basin set into a vanity unit. Finished with part tiled walls and a storage cupboard.



BuckleyBrown Estate Agents

55- 57 Leeming Street | Mansfield | Nottinghamshire | NG18 1ND

t: 01623 633633 | mansfield@buckleybrown.co.uk | www.buckleybrown.co.uk

IMPORTANT: we would like to inform prospective purchasers that these sales particulars have been prepared as a general guide only. A detailed survey has not been carried out, nor the services, appliances and fittings tested. Room sizes should not be relied upon for furnishing purposes and are approximate. If floor plans are included, they are for guidance only and illustration purposes only and may not be to scale. If there are any important matters likely to affect your decision to buy, please contact us before viewing the property.

