



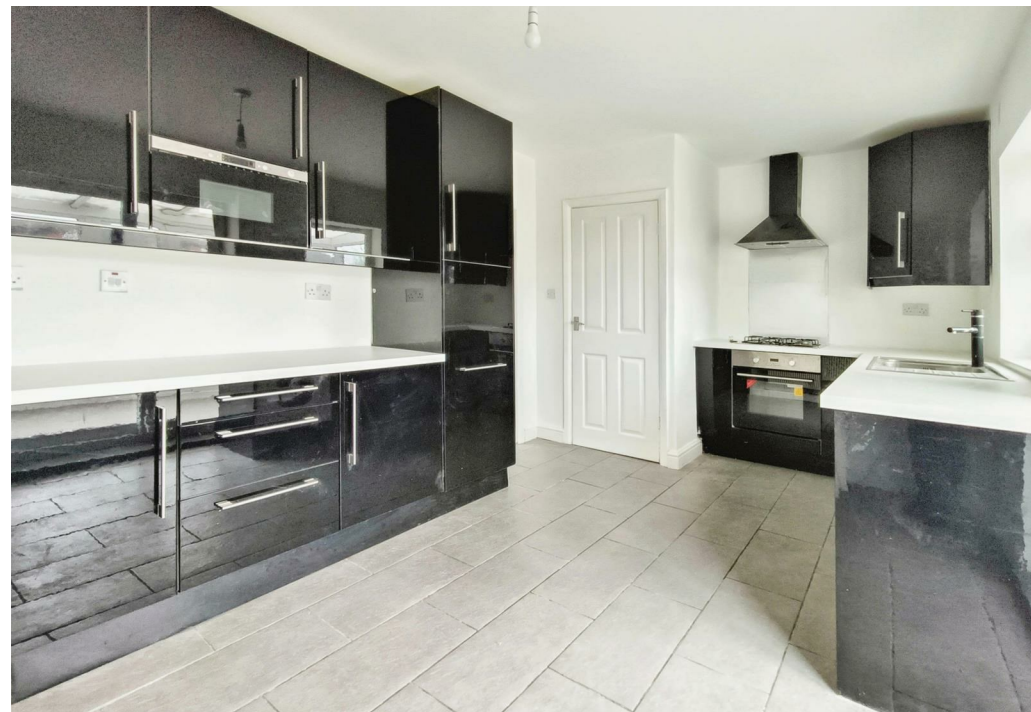
CHESTERFIELD ROAD NORTH | PLEASLEY | MANSFIELD | NG19 7QT

BuckleyBrown
ESTATE AGENTS

WHAT A FIND!... Located in a convenient part of Pleasley, close to local amenities and offering great access links to Mansfield and surrounding areas, is this three bedroomed semi-detached house which boasts an easy to maintain frontage with a driveway allowing for off-street parking and a lovely garden to the rear that is ready to be enjoyed, we are certain this will impress upon viewing!

This home features well planned accommodation which includes a bright and spacious lounge that has been beautifully decorated throughout and features a bay window to the front allowing for ample natural light. The kitchen/diner is just as impressive as it comes complete with a range of modern gloss units and cabinets and there is plenty of room for entertaining as it leads nicely into the conservatory. The conservatory is of a great size and offers plenty of versatility with surrounding windows overlooking the garden and double doors leading outside.

The first floor hosts three well presented bedrooms. There is also a modern family bathroom fitted with a suite in white. Don't miss out, call now to arrange a viewing!





Hall

With access to;

Living Room

Including a bay window to front elevation.

Kitchen/Dining Room

With cabinets and work surfaces over, with space for appliances.

Conservatory

With surrounding windows and access to the rear garden.

Landing

With access to;

Bedroom One

With carpeted flooring and central heating radiator.

Bedroom Two

With carpeted flooring and central heating radiator.

Bedroom Three

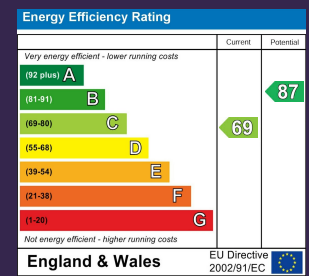
With carpeted flooring and central heating radiator.

Outside

With a well-maintained lawn to the rear. Including off-road parking for multiple cars.



IMPORTANT: we would like to inform prospective purchasers that these sales particulars have been prepared as a general guide only. A detailed survey has not been carried out, nor the services, appliances and fittings tested. Room sizes should not be relied upon for furnishing purposes and are approximate. If floor plans are included, they are for guidance only and illustration purposes only and may not be to scale. If there are any important matters likely to affect your decision to buy, please contact us before viewing the property.



CHESTERFIELD ROAD
NORTH
PLEASLEY
MANSFIELD
NG19 7QT



BuckleyBrown Estate Agents
55- 57 Leeming Street | Mansfield | Nottinghamshire | NG18 1ND
t: 01623 633633 | mansfield@buckleybrown.co.uk | www.buckleybrown.co.uk

IMPORTANT: we would like to inform prospective purchasers that these sales particulars have been prepared as a general guide only. A detailed survey has not been carried out, nor the services, appliances and fittings tested. Room sizes should not be relied upon for furnishing purposes and are approximate. If floor plans are included, they are for guidance only and illustration purposes only and may not be to scale. If there are any important matters likely to affect your decision to buy, please contact us before viewing the property.

BuckleyBrown
ESTATE AGENTS