



LESLEY
GREAVES
estate & letting agents



LESLEY
GREAVES
estate & letting agents



LESLEY
GREAVES
estate & letting agents

£190,000

CHESTERFIELD AVENUE GEDLING

- SEMI DETACHED HOUSE
- TWO BEDROOMS
- LOUNGE/DINER
- DINING ROOM
- POPULAR LOCATION
- EPC C



LESLEY
GREAVES
estate & letting agents



LESLEY
GREAVES
estate & letting agents



LESLEY
GREAVES
estate & letting agents



Semi-Detached Home Offering Generous Living Space

THIS WELL-PRESENTED TWO BEDROOM SEMI-DETACHED HOME OFFERS VERSATILE LIVING OVER THREE LEVELS, MAKING IT IDEAL FOR MODERN FAMILY LIFE. LOCATED WITHIN EASY REACH OF GEDLING, CARLTON AND MAPPERLEY'S AMENITIES, THE PROPERTY ALSO BOASTS CONVENIENT ACCESS TO POPULAR SCHOOLS AND FREQUENT BUS SERVICES.

THE GROUND FLOOR OPENS INTO A WELCOMING HALLWAY THAT LEADS TO A GENEROUS KITCHEN FEATURING WOOD-EFFECT WALL AND BASE UNITS. INTEGRATED APPLIANCES INCLUDE A HOB AND OVEN WITH AN EXTRACTOR ABOVE, AND THERE IS AMPLE SPACE FOR FREESTANDING APPLIANCES. A COMFORTABLE BEDROOM, A MODERN FAMILY BATHROOM, AND A BRIGHT DINING ROOM WITH STAIRS LEADING TO THE MASTER BEDROOM COMPLETE THE GROUND FLOOR. BY REINSTATING A WALL IN THE DINING ROOM, THIS SPACE CAN BE CONVERTED INTO AN ADDITIONAL BEDROOM, OFFERING FLEXIBILITY FOR GROWING FAMILIES.

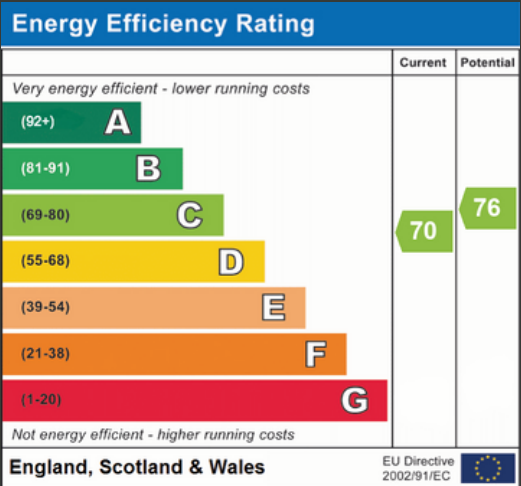
THE LOWER GROUND FLOOR IS A STANDOUT SPACE, FEATURING A SPACIOUS LOUNGE/DINER WITH PATIO DOORS THAT OPEN DIRECTLY ONTO A PRIVATE REAR PATIO PERFECT FOR ENTERTAINING OR RELAXING.

UPSTAIRS, THE GENEROUS MASTER BEDROOM IS FILLED WITH NATURAL LIGHT, OFFERING A PEACEFUL RETREAT COMPLETE WITH AMPLE STORAGE AND THE ADDED CONVENIENCE OF A WC.

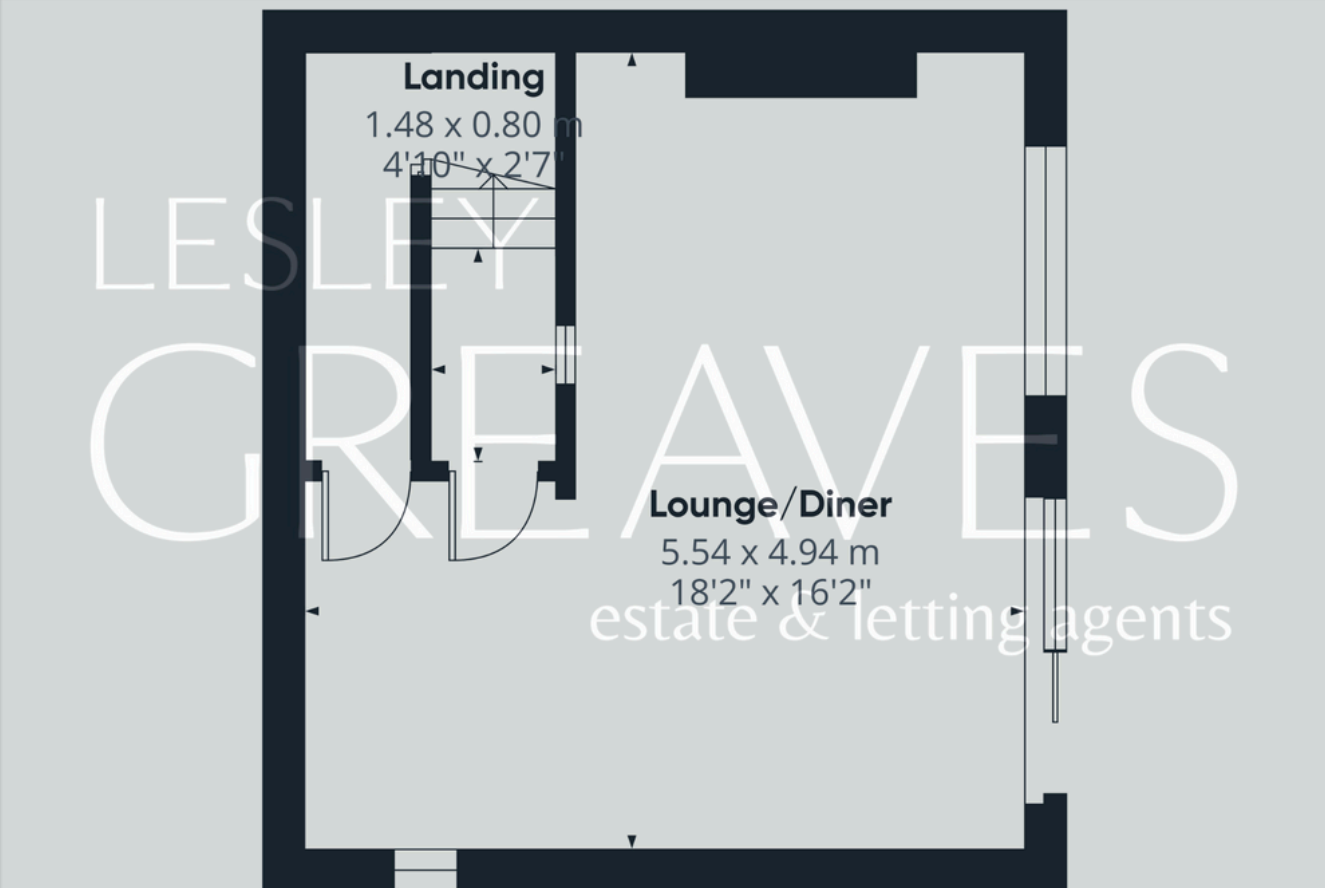
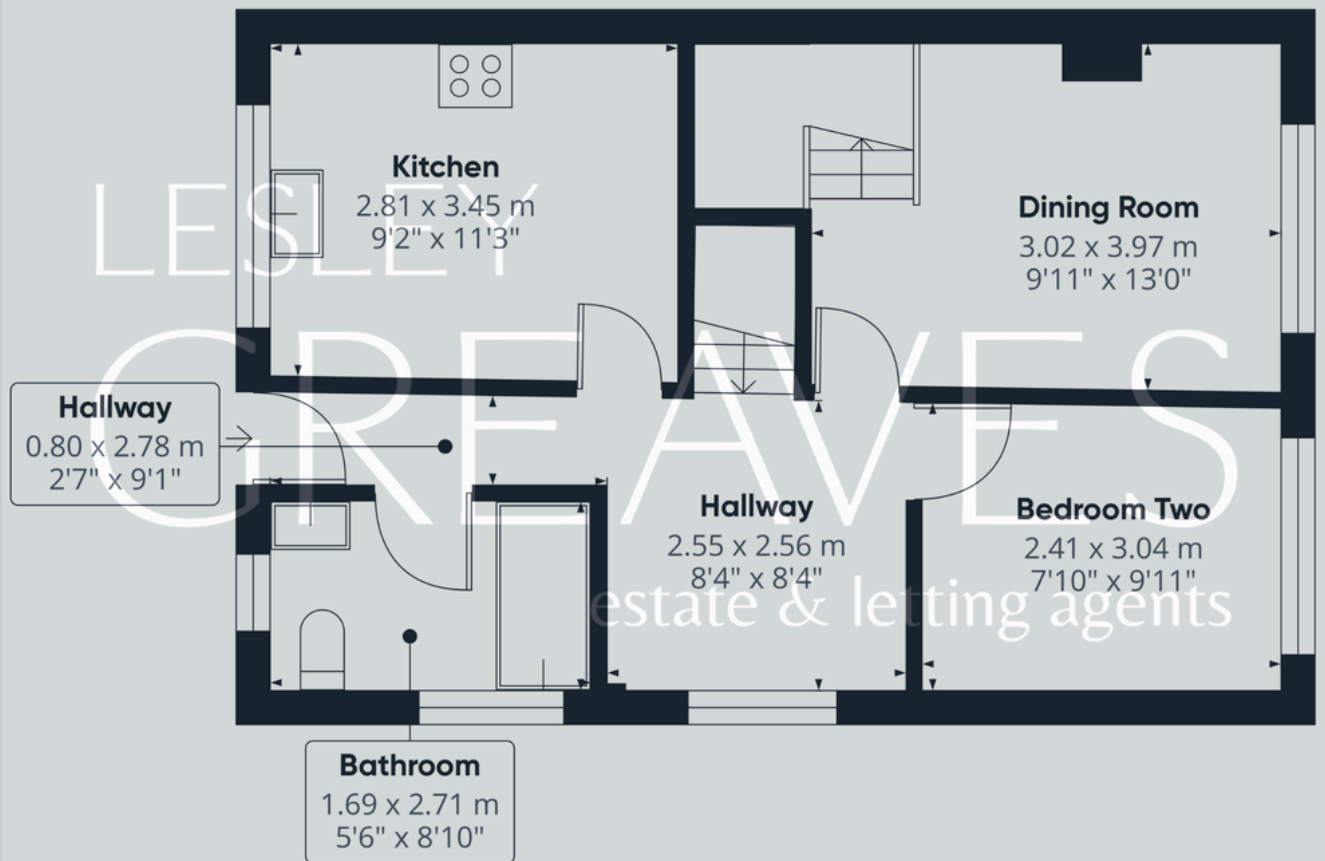
OUTSIDE, THE REAR GARDEN IS A TRUE HIGHLIGHT, THOUGHTFULLY LANDSCAPED OVER SEVERAL TIERS. IT INCLUDES AREAS FOR DINING, LOUNGING AND ENJOYING THE SUNSHINE, COMPLEMENTED BY RAISED BEDS FILLED WITH MATURE PLANTING AND THE BENEFIT OF OFF-STREET PARKING.

VIEWING IS HIGHLY RECOMMENDED!

- FREEHOLD
- COUNCIL TAX; BAND B
- LOCAL AUTHORITY; GEDLING BOROUGH COUNCIL
- MEASUREMENTS; 101 SQ METERS







LESLEY
GREAVES
estate & letting agents



Lesley Greaves Estate & Lettings Agents

20 Main Road ,Gedling, Nottingham, NG4 3HG

0115 987 7337

sales@lesleygreaves.co.uk