



£160,000-£170,000

GUIDE PRICE

CINDERHILL GROVE
GEDLING

- THREE BEDROOMS
- KITCHEN/DINER
- LIVING ROOM
- LARGE REAR GARDEN
- END TERRACED
- CUL DE SAC POSITION
- EPC D



Spacious Three-Bedroom End Terrace

THIS THREE BEDROOM END TERRACED IS IDEAL FOR FAMILIES OR FIRST-TIME BUYERS. SITUATED IN A POPULAR RESIDENTIAL AREA CLOSE TO LOCAL SCHOOLS AND TRANSPORT LINKS. THIS HOME OFFERS BOTH SPACE AND POTENTIAL IN EQUAL MEASURE. THE PROPERTY OFFERS COMFORTABLE LIVING THROUGHOUT AND BOASTS A GENEROUS REAR GARDEN.

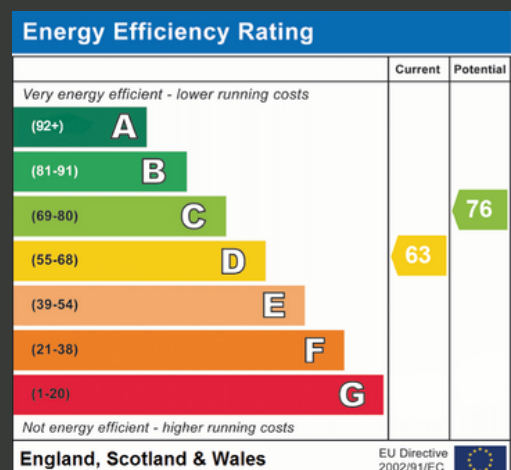
UPON ENTERING, A HALLWAY PROVIDES A CONVENIENT SPACE FOR COATS AND SHOES BEFORE LEADING INTO A COSY AND INVITING LIVING ROOM. THE ROOM BENEFITS FROM A FEATURE FIREPLACE AND A LARGE FRONT-FACING WINDOW THAT ALLOWS IN PLENTY OF NATURAL LIGHT.

FROM THE LIVING ROOM, YOU ARE LED INTO THE WELCOMING KITCHEN/DINER, WHICH PROVIDES AMPLE SPACE FOR BOTH COOKING AND DINING. IT FEATURES A RANGE OF WALL AND BASE UNITS, ALONG WITH SPACE FOR FREESTANDING APPLIANCES.

UPSTAIRS THE PROPERTY OFFERS THREE GOOD-SIZED BEDROOMS AND A FAMILY BATHROOM, PROVIDING PLENTY OF SPACE FOR A GROWING FAMILY.

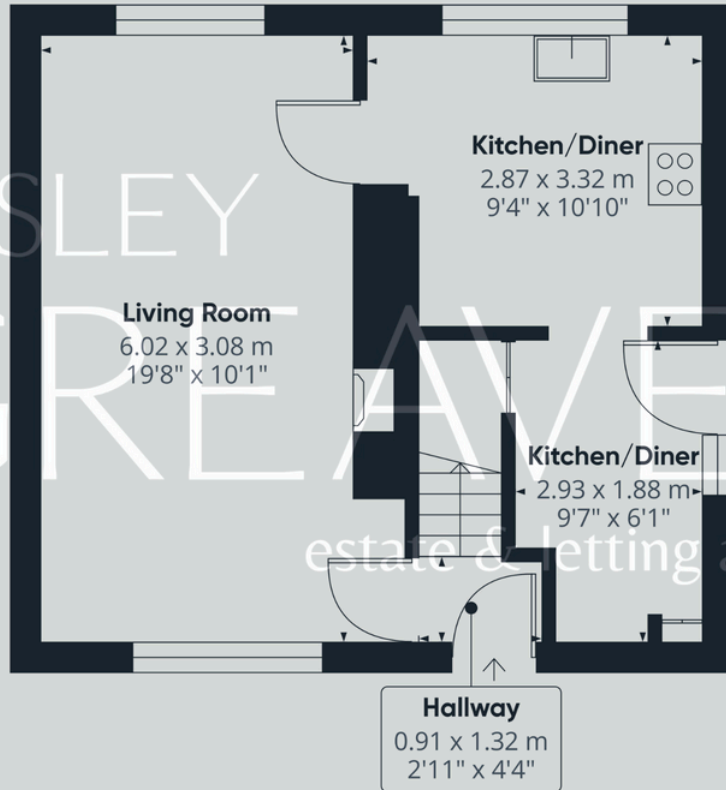
TO THE REAR A LARGE, ENCLOSED GARDEN, LAID TO LAWN, OFFERING A FANTASTIC OUTDOOR AREA PERFECT FOR CHILDREN, ENTERTAINING OR FUTURE PROJECTS.

- FREEHOLD
- COUNCIL TAX; BAND A
- LOCAL AUTHORITY; GEDLING BOROUGH COUNCIL
- MEASUREMENTS; 79 SQ METERS





LESLEY
GREAVES



estate & letting agents



Floor 1

Lesley Greaves Estate & Lettings Agents

20 Main Road ,Gedling, Nottingham, NG4 3HG

0115 987 7337

sales@lesleygreaves.co.uk