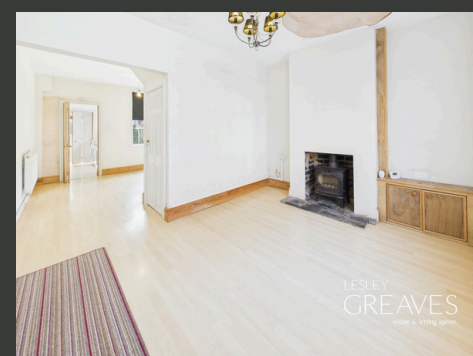




# £130,000

WALLET STEET  
NETHERFIELD

- MODERN KITCHEN
- TWO RECEPTION ROOMS
- IDEAL FOR FIRST TIME BUYERS
- LOW MAINTENANCE REAR GARDEN
- SPACIOUS DOUBLE BEDROOMS
- EPC D



## Charming 2-Bedroom Mid-Terraced House in a Prime Location

LOCATED JUST A SHORT WALK FROM NETHERFIELD'S AMENITIES, PUBLIC TRANSPORT LINKS, AND THE FANTASTIC VICTORIA RETAIL PARK, THIS CHARMING 2-BEDROOM MID-TERRACED HOUSE OFFERS A FANTASTIC OPPORTUNITY FOR THOSE SEEKING A PROPERTY IN A CONVENIENT AND SOUGHT-AFTER LOCATION.

THE PROPERTY FEATURES TWO INVITING RECEPTION ROOMS: A COSY LOUNGE AND A SEPARATE DINING AREA THAT OVERLOOKS THE REAR COURTYARD GARDEN, PROVIDING A TRANQUIL SPACE TO RELAX. THE MODERN KITCHEN, WITH ITS STYLISH CREAM TILES, ALSO OFFERS ACCESS TO THE ENCLOSED REAR GARDEN.

ON THE FIRST FLOOR, THE LANDING LEADS TO TWO BEDROOMS, INCLUDING A SPACIOUS DOUBLE BEDROOM AND A FURTHER SINGLE ROOM. THIS SECOND BEDROOM OFFERS VERSATILE POTENTIAL AS A NURSERY, GUEST ROOM, OR OFFICE FOR THOSE WORKING FROM HOME.

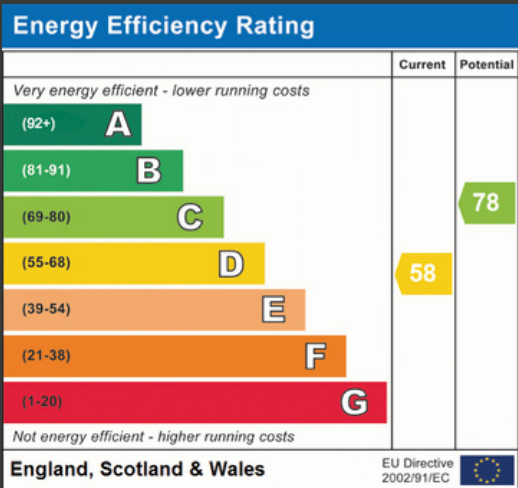
THE BATHROOM IS EQUIPPED WITH A CONTEMPORARY THREE-PIECE SUITE, ADDING TO THE PROPERTY'S MODERN APPEAL.

EXTERNALLY, THE SLABBED COURTYARD GARDEN OFFERS A PEACEFUL OUTDOOR RETREAT, PERFECT FOR ENJOYING THE OUTDOORS. ON-STREET PARKING IS AVAILABLE AT THE FRONT OF THE PROPERTY.

THIS LOVELY MID-TERRACED HOME IS AN EXCELLENT OPPORTUNITY FOR FIRST-TIME BUYERS, WORKING PROFESSIONALS, OR DOWNSIZERS SEEKING A MOVE-IN-READY PROPERTY IN A VIBRANT COMMUNITY.

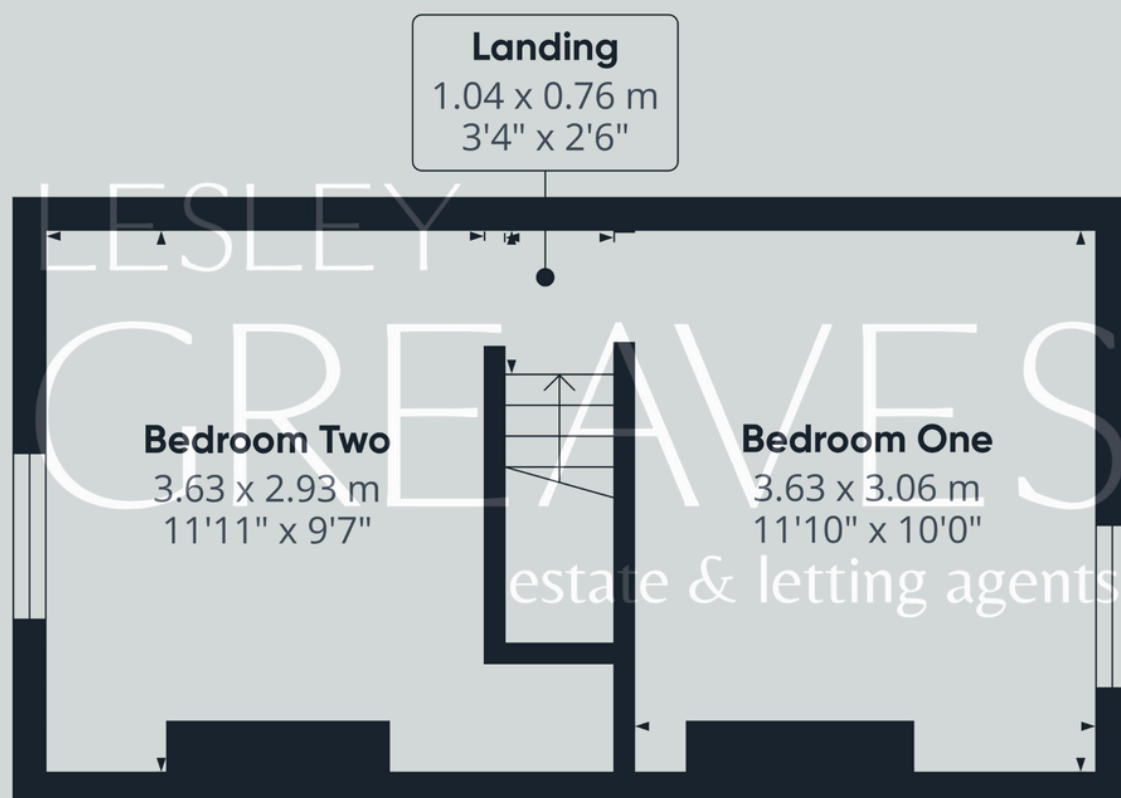
DON'T MISS THE CHANCE TO VIEW THIS WONDERFUL HOME AND EXPERIENCE ALL THE COMFORT IT HAS TO OFFER!

- FREEHOLD
- COUNCIL TAX; BAND A
- LOCAL AUTHORITY; GEDLING BOROUGH COUNCIL
- MEASUREMENTS; 68 SQ METERS









---

## Lesley Greaves Estate & Lettings Agents

20 Main Road ,Gedling, Nottingham, NG4 3HG

0115 987 7337

[sales@lesleygreaves.co.uk](mailto:sales@lesleygreaves.co.uk)