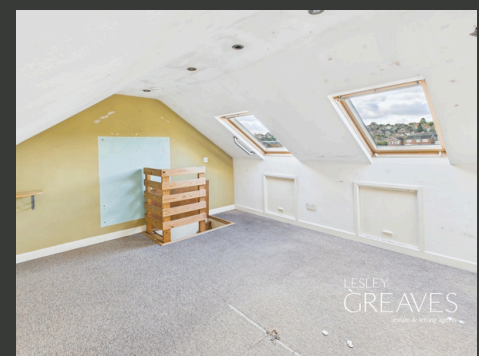




# £200,000-£210,000

## GUIDE PRICE

### PRIORY ROAD GEDLING



- MID TERRACED
- THREE BEDROOMS
- ATTIC ROOM
- TWO RECEPTION ROOMS
- GARAGE
- POPULAR LOCATION
- EPC D



# Three-Bedroom Mid Terraced Home with No Chain

OFFERED TO THE MARKET WITH NO ONWARD CHAIN, THIS THREE-BEDROOM MID TERRACED FAMILY HOME IS CONVENIENTLY LOCATED NEAR THE AMENITIES OF GEDLING, CARLTON, AND MAPPERLEY, WITH FREQUENT BUS SERVICES TO THE CITY CENTRE JUST A SHORT DISTANCE AWAY.

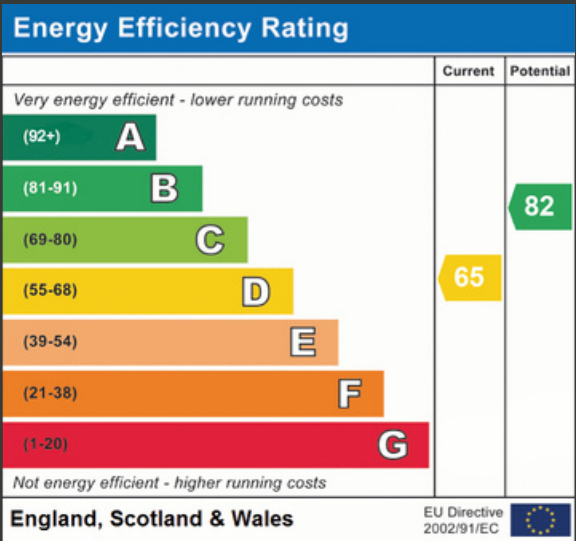
UPON ENTERING, YOU ARE WELCOMED INTO A SPACIOUS LIVING ROOM THAT LEADS THROUGH TO A FLEXIBLE SECOND RECEPTION ROOM, FEATURING PATIO DOORS THAT OPEN ONTO THE REAR GARDEN. THE KITCHEN PROVIDES AMPLE STORAGE AND LEADS TO A DOWNSTAIRS SHOWER ROOM WITH SPACE FOR FREESTANDING APPLIANCES.

UPSTAIRS, A LANDING PROVIDES ACCESS TO THE THREE BEDROOMS AND STAIRS LEADING TO AN ATTIC ROOM.

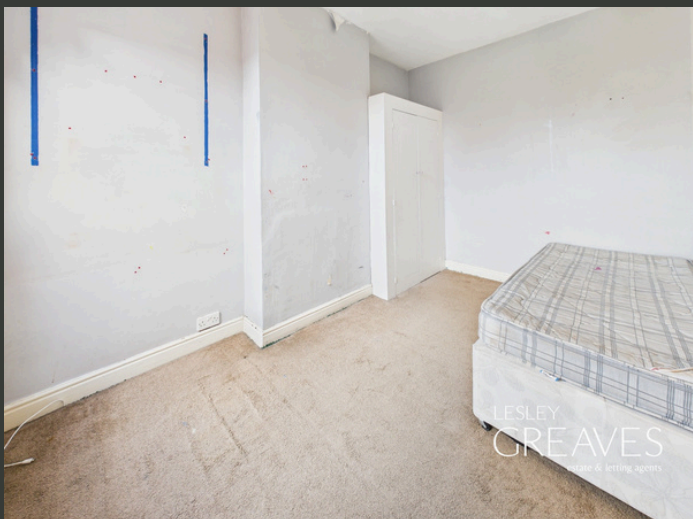
OUTSIDE, THE REAR GARDEN INCLUDES A PATIO AREA THAT STEPS UP TO A LAWN AND PROVIDES ACCESS TO THE GARAGE, WHICH CAN ALSO BE ACCESSED FROM FIRST AVENUE.

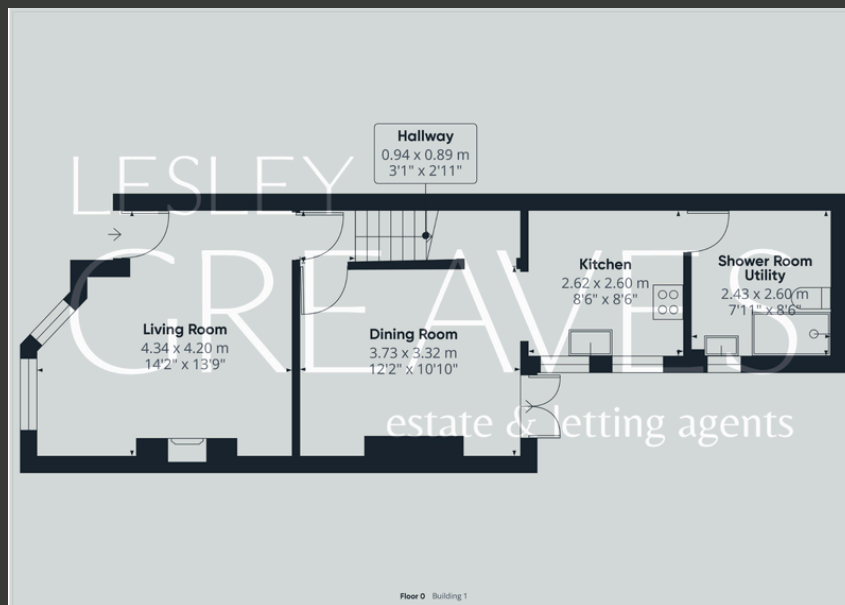
THIS PROPERTY, WITH ITS GENEROUS LIVING SPACE AND PRIME LOCATION, IS IDEAL FOR BUYERS SEEKING A HOME WITH POTENTIAL FOR PERSONALISATION AND GROWTH.

- FREEHOLD
- COUNCIL TAX; BAND A
- LOCAL AUTHORITY; GEDLING BOROUGH COUNCIL
- MEASUREMENTS; 84 SQ METERS









# Lesley Greaves Estate & Lettings Agents

20 Main Road ,Gedling, Nottingham, NG4 3HG

0115 987 7337

[sales@lesleygreaves.co.uk](mailto:sales@lesleygreaves.co.uk)