



£375,000-£400,00

GUIDE PRICE

NOTTINGHAM ROAD BURTON JOYCE

- EXTENDED DETACHED HOME
- FOUR BEDROOMS
- EN SUITE TO MASTER BEDROOM
- MODERN KITCHEN/DINER
- UTILITY ROOM & WC
- EPC TBC



Extended Four-Bedroom Detached Home in Sought-After Burton Joyce

WE ARE PLEASED TO PRESENT THIS EXTENDED, FOUR-BEDROOM DETACHED HOME, SITUATED IN THE HIGHLY SOUGHT-AFTER VILLAGE OF BURTON JOYCE. OFFERING GENEROUS LIVING SPACE AND CONTEMPORARY FEATURES, THIS PROPERTY IS PERFECT FOR FAMILIES SEEKING COMFORT, CONVENIENCE, AND A SPACIOUS LAYOUT.

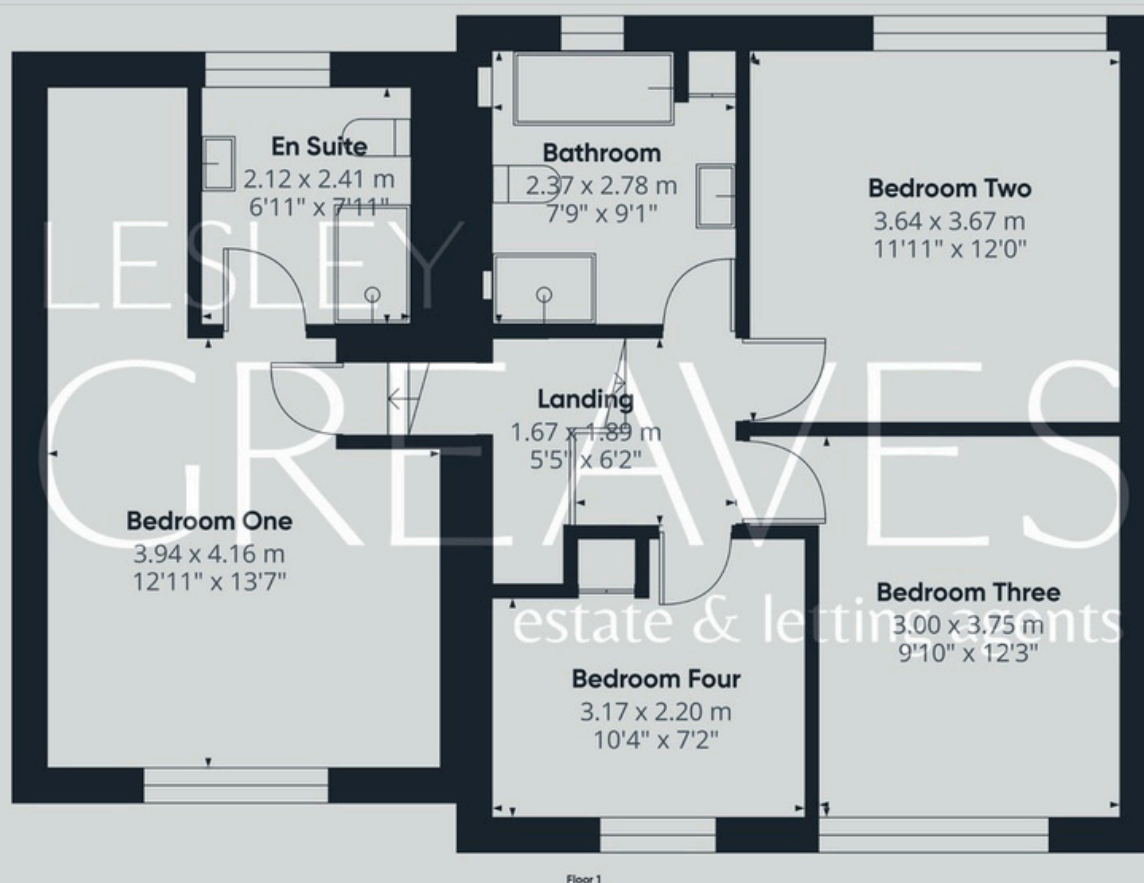
UPON ENTERING, YOU ARE WELCOMED INTO A BRIGHT HALLWAY, LEADING TO THE SPACIOUS LIVING ROOM. THIS IMPRESSIVE SPACE IS BATHED IN NATURAL LIGHT AND FEATURES A PATIO DOOR THAT OPENS ONTO THE REAR GARDEN. AT THE HEART OF THE HOME IS THE STUNNING KITCHEN DINER, BOASTING MODERN UNITS, SLEEK COUNTERTOPS, TWO INDUCTION HOBS, AND A STYLISH CENTRE ISLAND-IDEAL FOR HOSTING FAMILY AND FRIENDS. THE DINING AREA, COMPLETE WITH A SET OF PATIO DOORS, OFFERS BEAUTIFUL GARDEN VIEWS. A LARGE UTILITY ROOM PROVIDES ADDITIONAL SPACE FOR ESSENTIAL APPLIANCES, WHILE A CONVENIENT DOWNSTAIRS CLOAKROOM COMPLETES THE GROUND FLOOR.

UPSTAIRS, THE MASTER BEDROOM OFFERS A DEDICATED DRESSING AREA AND EN-SUITE. THREE FURTHER WELL-PROPORTIONED BEDROOMS BENEFIT FROM AMPLE NATURAL LIGHT, READY FOR NEW OWNERS TO PERSONALISE. A SPACIOUS FAMILY BATHROOM, FITTED WITH CONTEMPORARY FIXTURES INCLUDING A BATH AND SEPARATE SHOWER CUBICLE, SERVES THE REMAINING BEDROOMS.

THE TIERED REAR GARDEN, DESIGNED FOR OUTDOOR LIVING WITH MULTIPLE SEATING AREAS CREATING A SERENE SPACE FOR RELAXATION, PLAY, AND ENTERTAINING. BURTON JOYCE IS A SOUGHT AFTER VILLAGE LOCATION ON THE RIVER TRENT WITH BOTH RAIL AND DIRECT BUS ROUTES INTO NOTTINGHAM CITY CENTRE.

- FREEHOLD
- COUNCIL TAX; BAND D
- LOCAL AUTHORITY; GEDLING BOROUGH COUNCIL
- MEASUREMENTS; TBC





Lesley Greaves Estate & Lettings Agents

20 Main Road ,Gedling, Nottingham, NG4 3HG

0115 987 7337

sales@lesleygreaves.co.uk