



£425,000

REDLAND GROVE CARLTON

- SPACIOUS DETACHED HOME
- FOUR BEDROOMS
- DINING ROOM
- SPACIOUS LIVING ROOM
- DOWNSTAIRS WC
- DRIVEWAY
- EPC D



Spacious Four-Bedroom Detached Home in a Prime Location

A GENEROUSLY PROPORTIONED FOUR-BEDROOM DETACHED HOME, SITUATED ON A HIGHLY SOUGHT-AFTER ROAD. THIS PRIME LOCATION OFFERS CONVENIENT ACCESS TO EXCELLENT LOCAL AMENITIES AND REGULAR BUS ROUTES TO THE CITY CENTRE.

UPON ENTERING, YOU ARE WELCOMED BY AN INVITING ENTRANCE HALL, ELEGANTLY FINISHED WITH OAKWOOD FLOORING. THE SPACIOUS LOUNGE, POSITIONED AT THE REAR OF THE PROPERTY, ALSO FEATURES OAKWOOD FLOORING AND BOASTS A BRIGHT, AIRY AMBIANCE, COMPLEMENTED BY PATIO DOORS THAT OPEN ONTO THE REAR GARDEN.

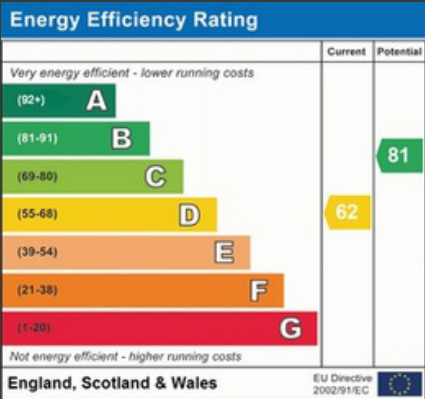
THE KITCHEN, WHILE IN NEED OF MODERNISATION, SEAMLESSLY FLOWS INTO THE DINING AREA, CREATING A PERFECT SPACE FOR FAMILY MEALS AND ENTERTAINING. A SEPARATE DOOR LEADS FROM THE DINING ROOM TO THE HALLWAY, ENHANCING ACCESSIBILITY. ADJACENT TO THE KITCHEN, A CONVENIENT DOWNSTAIRS WC INCLUDES UNDER-COUNTER SPACE FOR A WASHING MACHINE.

UPSTAIRS, THE FIRST FLOOR OFFERS THREE WELL-PROPORTIONED DOUBLE BEDROOMS, WITH THE MAIN BEDROOM BENEFITING FROM FITTED WARDROBES. ADDITIONALLY, THERE IS A VERSATILE SINGLE BEDROOM, IDEAL AS A HOME OFFICE. THE MODERN FAMILY BATHROOM WITH A SHOWER OVER THE BATH IS ACCOMPANIED BY A SEPARATE WC FOR ADDED CONVENIENCE.

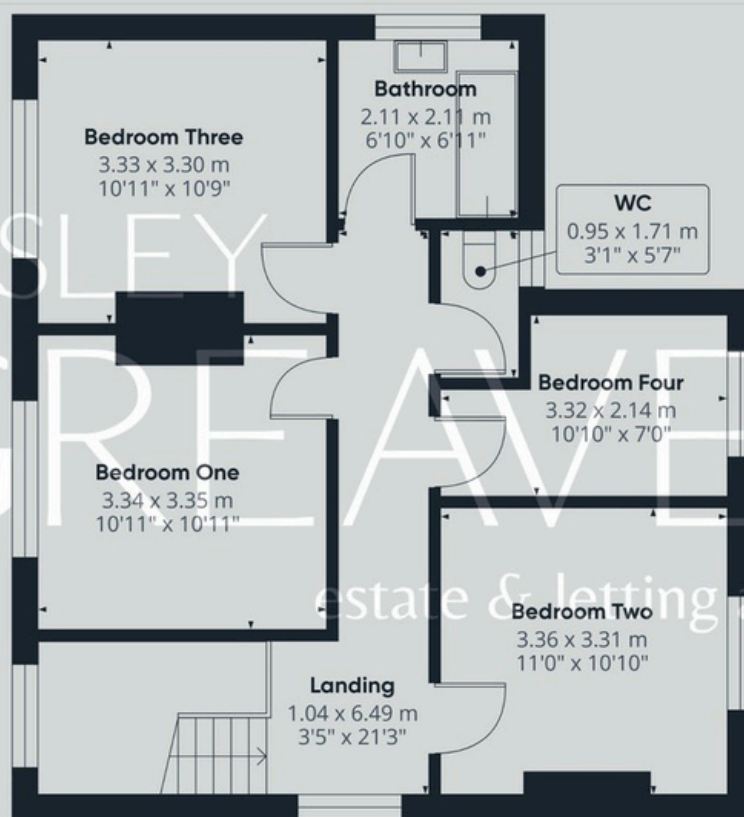
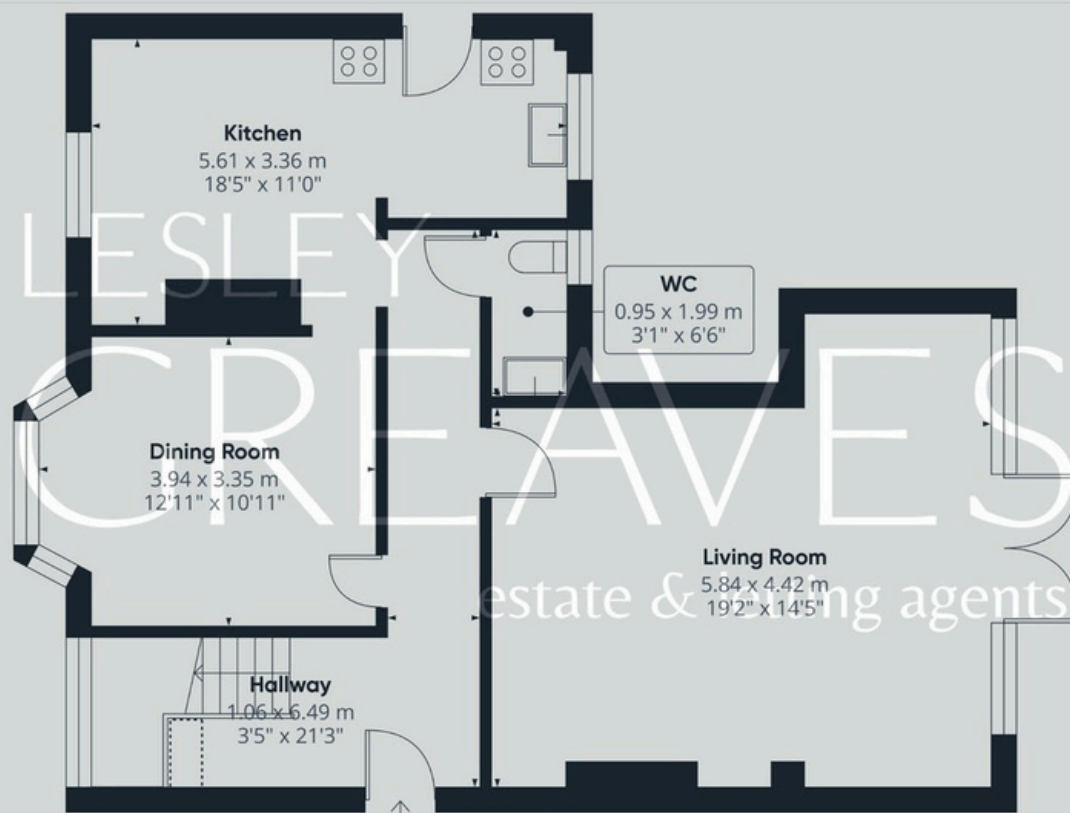
EXTERNALLY, THE PROPERTY BOASTS A GRAVEL DRIVEWAY AT THE FRONT, PROVIDING AMPLE OFF-ROAD PARKING FOR MULTIPLE VEHICLES. TO THE REAR, A PRIVATE GARDEN WITH A PATIO SEATING AREA OFFERS A TRANQUIL RETREAT, PERFECT FOR OUTDOOR RELAXATION AND ENTERTAINING.

THIS DELIGHTFUL HOME PRESENTS AN EXCELLENT OPPORTUNITY TO ADD YOUR PERSONAL TOUCH AND CREATE A STYLISH AND COMFORTABLE LIVING SPACE.

- FREEHOLD
- COUNCIL TAX; BAND C
- LOCAL AUTHORITY; GEDLING BOROUGH COUNCIL
- MEASUREMENTS; 138 SQ METERS







Lesley Greaves Estate & Lettings Agents

20 Main Road ,Gedling, Nottingham, NG4 3HG

0115 987 7337

sales@lesleygreaves.co.uk