



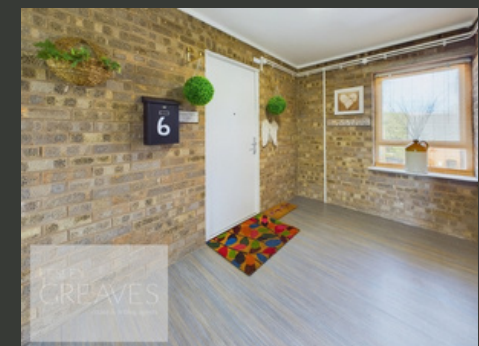
£140,000

OFFERS OVER

ST AUSTINS COURT
CARLTON



- FIRST FLOOR APARTMENT
- TWO BEDROOMS
- LIVING ROOM
- KITCHEN
- BATHROOM
- ALLOCATED PARKING
- EPC C



Spacious Two-Bedroom Second Floor Apartment

THIS WELL-MAINTAINED TWO-BEDROOM SECOND FLOOR APARTMENT IS AN EXCELLENT CHOICE FOR BOTH FIRST-TIME BUYERS AND INVESTORS, WITH THE ADDED BENEFIT OF BEING OFFERED WITH NO UPWARD CHAIN. OFFERING SPACIOUS LIVING AREAS, THE PROPERTY IS LOCATED IN A HIGHLY SOUGHT-AFTER AREA WITH CONVENIENT ACCESS TO A WIDE RANGE OF AMENITIES, INCLUDING RESTAURANTS, SHOPS, AND REPUTABLE LOCAL SCHOOLS.

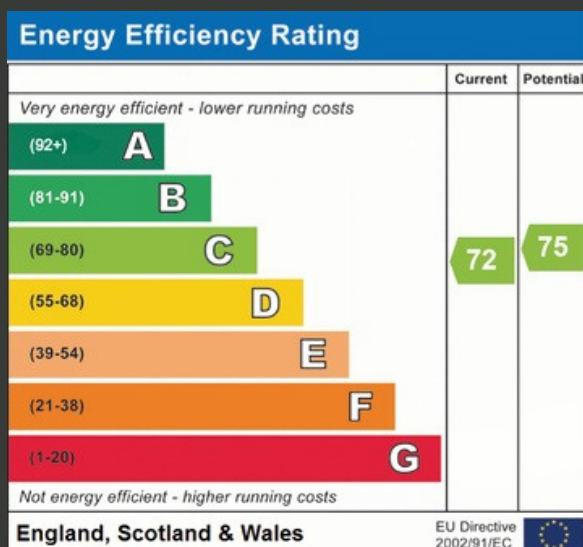
UPON ENTERING, A WELCOMING HALLWAY LEADS TO ALL ROOMS. THE LIVING ROOM IS GENEROUSLY SIZED, PROVIDING PLENTY OF SPACE FOR RELAXATION. THE KITCHEN IS WELL-EQUIPPED WITH AMPLE CABINET AND COUNTER SPACE, AND ROOM FOR FREESTANDING APPLIANCES.

THE APARTMENT FEATURES TWO DOUBLE BEDROOMS, WITH THE MAIN BEDROOM BENEFITING FROM BUILT-IN STORAGE. THE BATHROOM IS FITTED WITH A THREE-PIECE SUITE.

ADDITIONAL BENEFITS INCLUDE A COMMUNAL GARDEN SECURE ALLOCATED PARKING, ADDING PEACE OF MIND AND PRACTICALITY TO THIS EXCEPTIONAL PROPERTY.

GROUND RENT £10.00 PER ANNUM LENGTH OF LEASE 124YRS STARTED 02/04/1990 REMAINING YEARS 90YRS

- LEASEHOLD
- COUNCIL TAX; BAND A
- LOCAL AUTHORITY; GEDLING BOROUGH COUNCIL
- MEASUREMENTS; 58 SQ METERS







Lesley Greaves Estate & Lettings Agents

20 Main Road ,Gedling, Nottingham, NG4 3HG

0115 987 7337

sales@lesleygreaves.co.uk