



£165,000 to £175,000

Guide Price

ASHWORTH CLOSE
NOTTINGHAM

- MID TERRACED
- TWO BEDROOMS
- LIVING ROOM
- DINING KITCHEN
- FAMILY BATHROOM
- DRIVEWAY PARKING
- EPC C



Charming Mid-Terraced Home

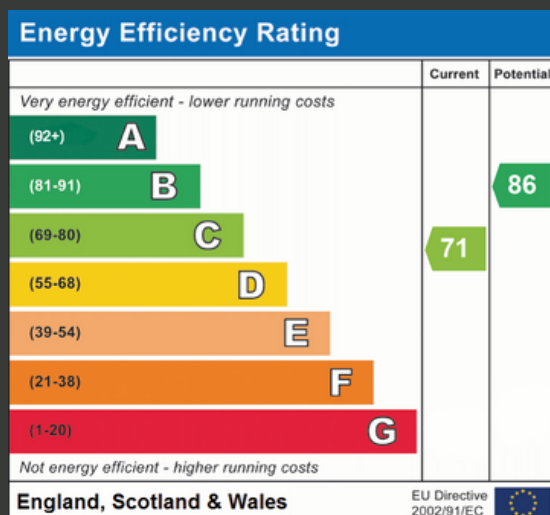
THIS CHARMING MID-TERRACE HOME IS CONVENIENTLY LOCATED WITHIN EASY REACH OF CARLTON'S WIDE RANGE OF AMENITIES. OFFERING THE PERFECT BALANCE OF COMFORT AND ACCESSIBILITY, IT'S AN IDEAL CHOICE FOR FAMILIES OR COUPLES LOOKING FOR A COZY PLACE TO CALL HOME. SITUATED JUST A SHORT WALK FROM SEVERAL SCHOOLS AND FREQUENT BUS SERVICES, THE PROPERTY ENJOYS EXCELLENT CONNECTIVITY TO NOTTINGHAM CITY CENTRE.

THE LOUNGE IS SPACIOUS AND FILLED WITH NATURAL LIGHT, PROVIDING A COMFORTABLE AREA FOR RELAXATION. FROM THE LOUNGE, THE DINING KITCHEN OFFERS AMPLE ROOM FOR FREESTANDING WHITE GOODS, WITH PLENTY OF SPACE FOR MODERN LIVING.

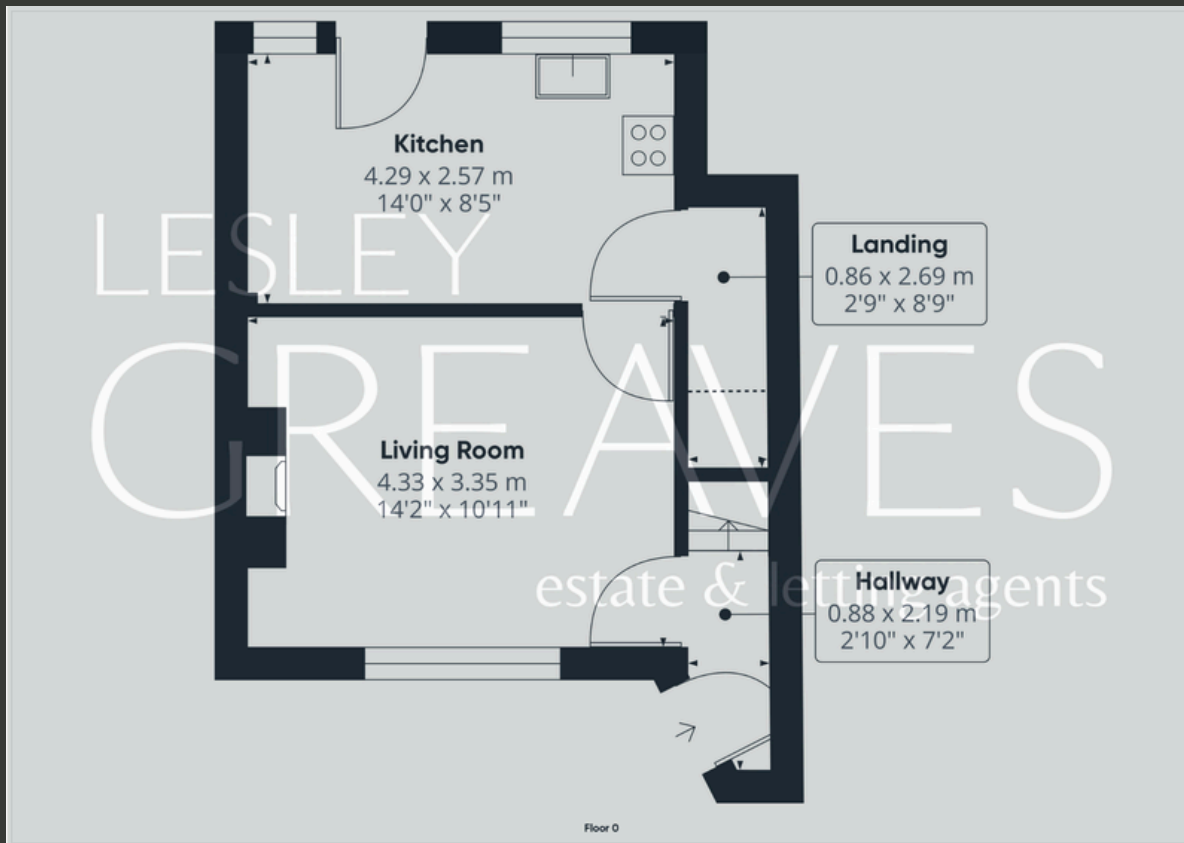
UPSTAIRS, THE HOME FEATURES TWO WELL-SIZED BEDROOMS AND A FAMILY BATHROOM, PROVIDING A PRACTICAL LAYOUT FOR EVERYDAY LIFE.

OUTSIDE, THE REAR GARDEN INCLUDES A PATIO AREA PERFECT FOR OUTDOOR DINING, ALONG WITH A LAWNED SECTION IDEAL FOR RELAXATION OR PLAY. AT THE FRONT, A CONVENIENT DRIVEWAY OFFERS OFF-STREET PARKING.

- FREEHOLD
- COUNCIL TAX; BAND A
- LOCAL AUTHORITY; NOTTINGHAM CITY COUNCIL
- MEASUREMENTS; 65 SQ METERS







Lesley Greaves Estate & Lettings Agents

20 Main Road ,Gedling, Nottingham, NG4 3HG

0115 987 7337

sales@lesleygreaves.co.uk