



£650 pcm

Mount Pleasant, Lowdham, Nottingham, Nottinghamshire NG14 7BL

EPC Rating E



Tucked away off the Main Street of this popular village location sits this pretty one bedroom cottage.

In brief, the accommodation comprises a living room with an electric fire, brick surround and hearth, beamed ceiling and a latch door to the kitchen. The kitchen units are newly fitted, there is a freestanding oven, door to the rear, latch door to an enclosed staircase and a latch door to an under stair area with space for a fridge freezer.

To the first floor is a bedroom and a modern fitted bathroom comprising a bath with a mains fed shower over, low level WC and pedestal wash hand basin.

To the front is a lawned garden and to the rear is a yard area with a brick built utility outhouse with plumbing for a washing machine. There is gated access at the side of the property.

Lowdham is a sought after village location with both rail and direct bus routes into Nottingham City Centre. The village amenities include a Co-op, Post Office, Public Houses/Restaurants, Doctors, Chemist and a Primary School.

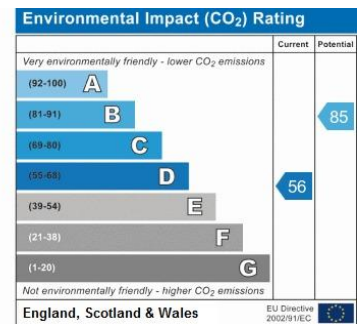
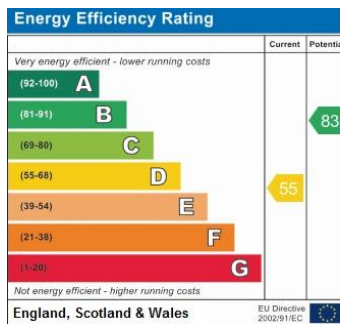
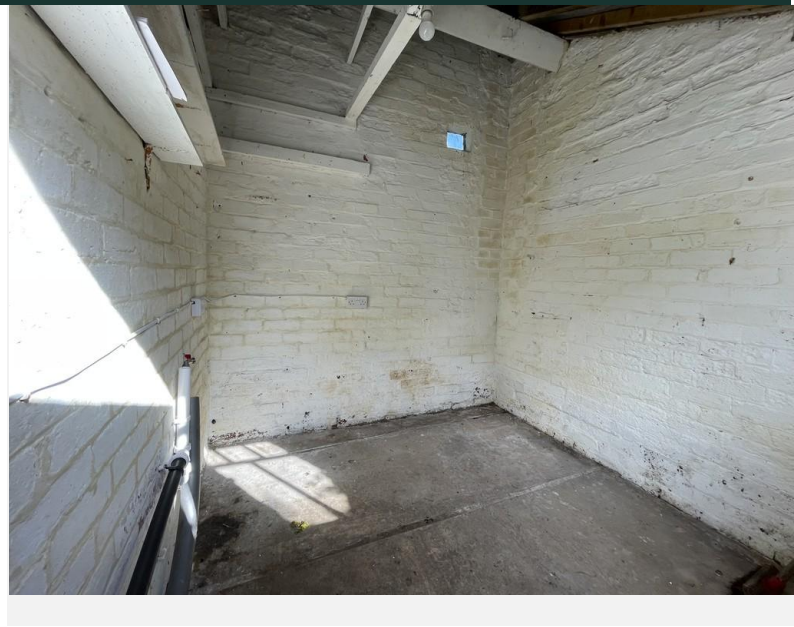
Initial 6 months fixed term Shorthold Tenancy
 Deposit £750
 Council Tax Band A

LOUNGE 11' 2" x 11' 1" (to the back of the chimney breast) (3.42m x 3.40m)

KITCHEN 6' 11" x 6' 9" (2.12m x 2.06m)

BEDROOM 11' 2" x 11' 1" (to the back of the chimney breast) (3.42m x 3.39m)

BATHROOM 6' 11" x 6' 10" (2.11m x 2.09m)



COUNCIL TAX BAND: A

LOCAL AUTHORITY: Newark and Sherwood District Council

SECURITY DEPOSIT

Set at a maximum of five weeks rent. This covers damages or defaults on the part of the tenant during the tenancy.

HOLDING DEPOSIT

As an agency we are not charging tenants a holding deposit.

20 Main Road
Gedling
Nottingham
NG4 3HP

Contact Us
www.lesleygreaves.co.uk
lettings@lesleygreaves.co.uk
0115 987 7337

Agents Note: Whilst every care has been taken to prepare these particulars, they are for guidance purposes only. All measurements are approximate and for general guidance purposes only and whilst every care has been taken to ensure their accuracy, they should not be relied upon and potential buyers/tenants are advised to recheck the measurements.

