



DELFIELD GARDENS LUTON LU1
£1,950 PER MONTH AVAILABLE 26/01/2026

Hamptons
THE HOME EXPERTS

{ THE PARTICULARS

Delfield Gardens Luton LU1

£1,950 Per Month
Unfurnished

 3 Bedrooms
 1 Bathroom
 1 Reception

Features

- 3 Bedrooms, - Detached, - Corner Plot, -
Bungalow, - Spacious Living Room, - Off
Street Parking, - Front and Rear Gardens, -
Large Garage, - Excellent Location, -
Unfurnished

Council Tax

Council Tax Band E

Hamptons
38 High Street
Harpenden, AL5 2SX
01582 742998
harpendenlettings@hamptons.co.uk
www.hamptons.co.uk

The Property

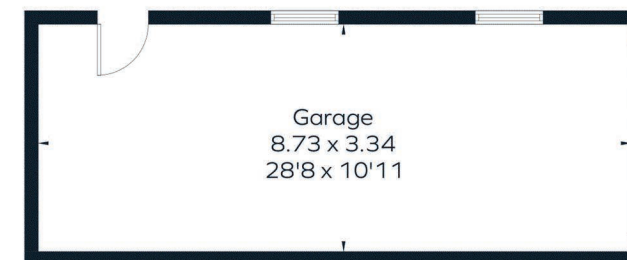
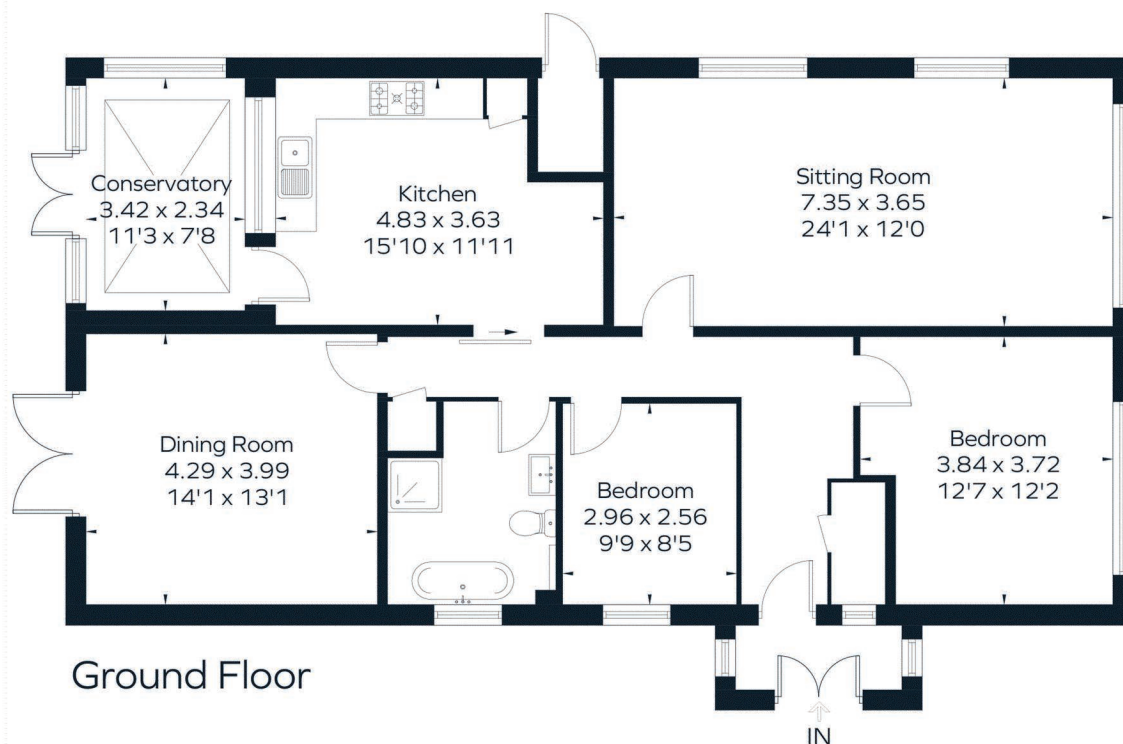
This spacious three bedroom bungalow is presented in excellent order. The accommodation comprises of a large sitting room overlooking the garden to the front. There is a modern fitted kitchen with space for dining which leads to a garden room/conservatory overlooking the rear garden. There are three double bedrooms and a family bathroom with separate shower cubicle in addition to a guest cloakroom in the hallway. Set on an impressive corner plot further selling points include off street parking and a large garage. Available immediately on an unfurnished basis.

Location

The bungalow is located in the heart of the popular village of Caddington. Within easy reach of the village green, local shops, amenities and the doctors surgery.



Approximate Floor Area = 118.6 sq m / 1277 sq ft
 External Cupboard = 1.4 sq m / 15 sq ft
 Garage = 29.2 sq m / 314 sq ft
 Total = 149.2 sq m / 1606 sq ft



(Not Shown In Actual Location / Orientation)

Ground Floor



This floor plan has been drawn in accordance with RICS Property Measurement 2nd edition.

All measurements, including the floor area, are approximate and for illustrative purposes only. @fourwalls-group.com #83988

For Clarification

We wish to inform prospective tenants that we have prepared these particulars as a general guide and they have been confirmed as accurate by the landlord. We have not verified permissions, nor carried out a survey, tested the services, appliances and specific fittings. Room sizes are approximate and measurement figures rounded: they are taken between internal wall surfaces and therefore include cupboards/shelves, etc. Accordingly, they should not be relied upon for

carpets and furnishings. It should also be noted that all fixtures and fittings, carpeted, curtains/blinds, kitchen equipment and garden statuary, whether fitted or not, are deemed removable by the landlord unless specifically itemised with these particulars. Please enquire in office or on our website for details on holding deposit and tenancy deposit figures.

