



Legrave High Street, Luton, Bedfordshire, LU4 0NG

Price £375,000 Freehold



Venture Residential are delighted to offer for sale this extended three-bedroom semi-detached home, ideally positioned on the ever-popular Legrave High Street in Luton.



Leagrave High Street

Luton, LU4 0NG



- THREE BEDROOM SEMI DETACHED
- EXTENDED
- DRIVEWAY FOR TWO CARS
- SHORT WALK TO L&D HOSPITAL
- GREAT ACCESS TO M1 MOTORWAY
- PRIMARY AND SECONDARY SCHOOLS NEARBY
- IDEAL FOR SOMEONE LOOKING TO PUT THEIR STAMP ON
- 1.3 MILE FROM LEAGRAVE RAILWAY STATION
- CHAIN FREE



Venture Residential are delighted to offer for sale this extended three-bedroom semi-detached home, ideally positioned on the ever-popular Leagrave High Street in Luton. Offered to the market chain free, this property presents a fantastic opportunity for buyers looking to add their own personal touch and create a wonderful family home.

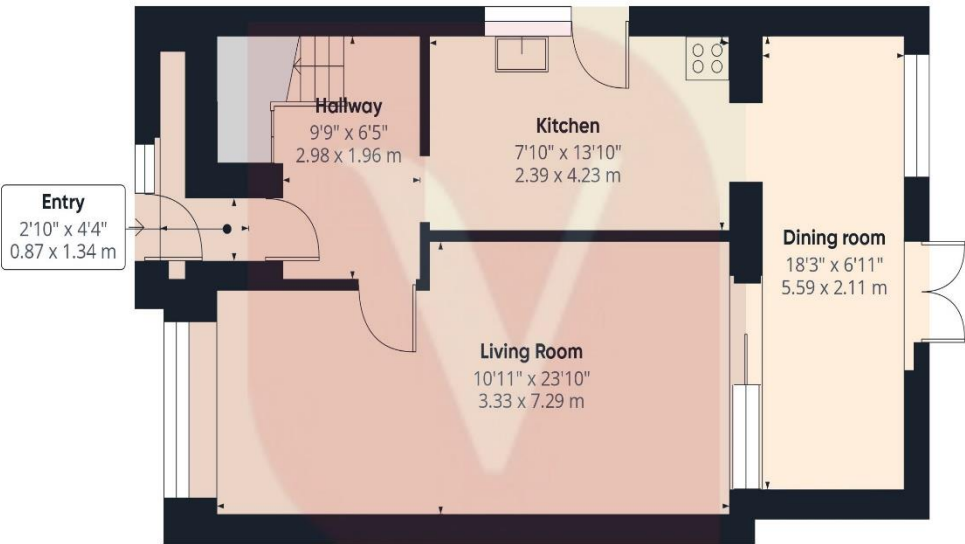
The ground floor has been extended, providing generous living accommodation with excellent potential for modernisation and redesign. The first floor hosts three well-proportioned bedrooms, making the home suitable for families, investors, or anyone seeking a property with strong future value.

Externally, the property benefits from a driveway for two cars, offering convenient off-street parking. The location is truly outstanding—just a short walk from the Luton & Dunstable Hospital, making it perfect for hospital staff or those needing close proximity. Commuters will appreciate the easy access to the M1 motorway, while Leagrave Railway Station is only 1.3 miles away, providing fast links into London and beyond.

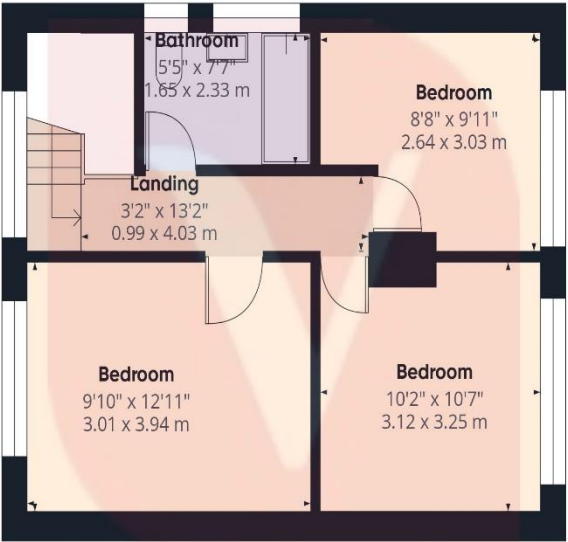
Families are well catered for with a selection of primary and secondary schools located nearby, along with a variety of local amenities and transport routes right on the doorstep.

With its prime location, generous space, and scope for improvement, this property is ideal for purchasers looking to put their own stamp on a home.
A chain-free sale makes the process even smoother.

For more information or to arrange a viewing, please contact Venture Residential.



Ground Floor



Floor 1

Approximate total area⁽¹⁾
1013 ft²
94.1 m²

(1) Excluding balconies and terraces

Calculations reference the RICS IPMS 3C standard. Measurements are approximate and not to scale. This floor plan is intended for illustration only.



Notice

Please note we have not tested any apparatus, fixtures, fittings, or services. Interested parties must undertake their own investigation into the working order of these items. All measurements are approximate and photographs provided for guidance only.



**9 Compton Avenue,
Luton,
Bedfordshire,
LU4 9AX**

**T: 01582 249155
E: info@venture-residential.co.uk**

