

Bidwell Hill, Dunstable, Bedfordshire, LU5 5EP

Guide Price £475,000 Freehold



Venture Residential are delighted to present this impressive four-bedroom detached family home, ideally positioned on Bidwell Hill in the ever-popular Houghton Regis.



Bidwell Hill

Dunstable, LU5 5EP

- 4 BEDROOMS
- DETACHED HOUSE
- BENEFITTING FROM FRONT EXTENTION
- OPEN PLAN LIVING & SEPERATE DINING AREA
- DOWNSTAIRS WC
- FAMILY BATHROOM
- WELL PRESENTED REAR GARDEN WITH PATIO
- GARAGE TO REAR & PARKING
- SOUGHT AFTER LOCATION



Venture Residential are delighted to present this impressive four-bedroom detached family home, ideally positioned on Bidwell Hill in the ever-popular Houghton Regis. Offering a thoughtfully extended layout, generous living space, and a well-maintained garden, this home is perfect for growing families seeking comfort and convenience.

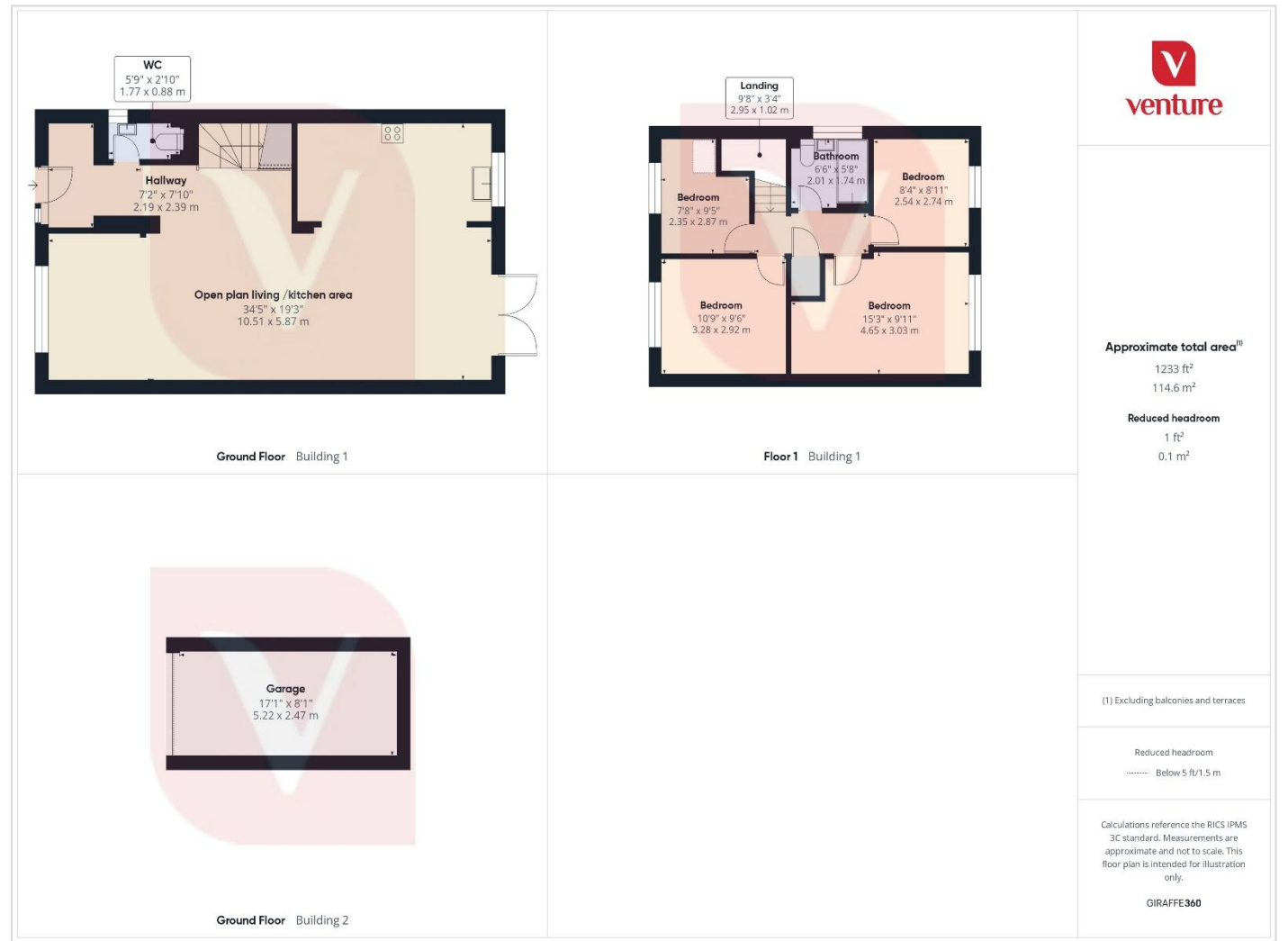
The property has benefited from a front extension, creating a spacious and versatile home that balances modern open-plan living with practical features. From the moment you step inside, the welcoming entrance hall sets the tone, leading you into the heart of the property.

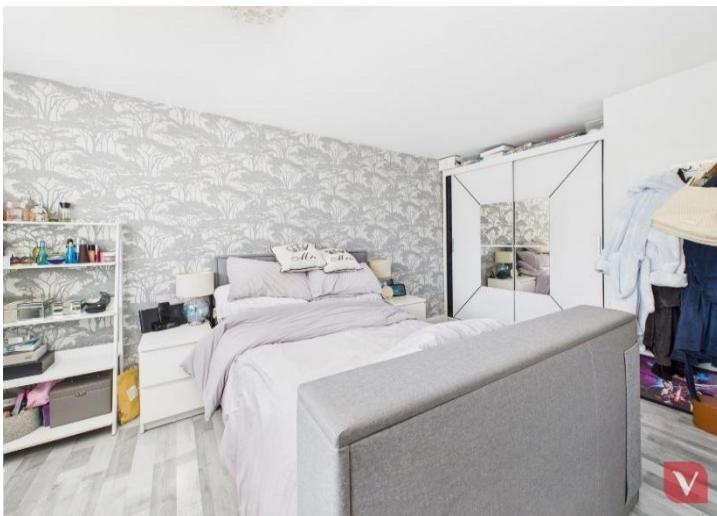
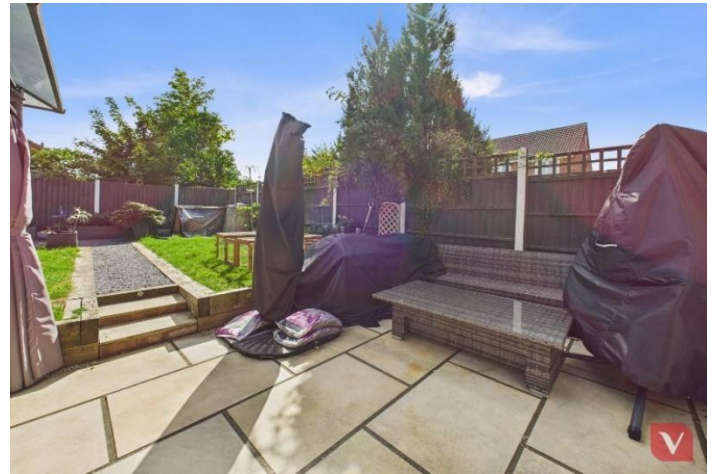
The ground floor boasts a fantastic open-plan living space, designed to suit today's family lifestyles. This area combines a cosy living space for relaxing evenings, a dining area perfect for family meals or entertaining, and a stylish kitchen complete with an island. The kitchen is the true hub of the home, offering ample storage, workspace, and a modern design that makes everyday living a pleasure. A convenient downstairs WC completes the ground floor accommodation.

Upstairs, the property continues to impress, offering four well-proportioned bedrooms, making it an ideal choice for families. Whether you're looking for bedrooms for children, guest rooms, or even a home office, the layout provides flexibility to suit your needs. A family bathroom serves the first floor, providing both practicality and potential for personalisation.

Externally, the home enjoys a lovely rear garden with a patio area, creating a private space for outdoor dining, summer barbecues, or simply enjoying the fresh air. To the rear of the plot, there is also a garage, providing additional storage or parking options.

Bidwell Hill is a desirable residential road located just off Bedford Road in Houghton Regis. The area is popular with families thanks to its close-knit community feel, excellent local amenities, and good schools nearby. For commuters, transport links are a particular highlight, with easy access to the M1 motorway and neighbouring towns, as well as convenient bus routes. The combination of a peaceful residential setting with excellent connections makes this location highly sought-after.





Energy Efficiency Rating		
	Current	Potential
Very energy efficient - lower running costs		
(92 Plus) A		
(81-91) B		83
(69-80) C	70	
(55-68) D		
(39-54) E		
(21-38) F		
(1-20) G		
Not energy efficient - higher running costs		
England & Wales	EU Directive 2002/91/EC	

Notice

Please note we have not tested any apparatus, fixtures, fittings, or services. Interested parties must undertake their own investigation into the working order of these items. All measurements are approximate and photographs provided for guidance only.



9 Compton Avenue,
Luton,
Bedfordshire,
LU4 9AX

T: 01582 249155
E: info@venture-residential.co.uk

