

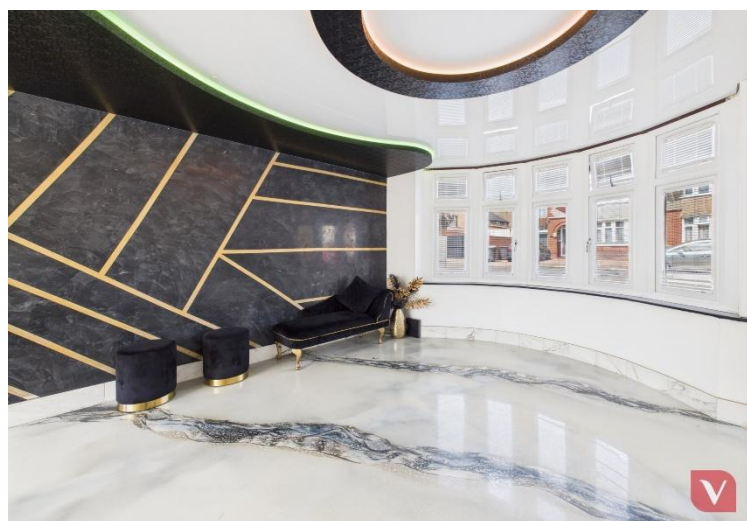


Fountains Road, Luton, Bedfordshire, LU3 1LY

Price £700,000 Freehold



Venture Residential are proud to present this immaculate and exceptionally spacious five-bedroom detached family home located on the highly desirable Fountains Road, just off the prestigious New Bedford Road—one of Luton's most sought-after locations.





# Fountains Road

## Luton, LU3 1LY

- FIVE BEDROOMS
- STUNNING DETACHED HOUSE
- APPROXIMATELY 2350SQ FT OF LIVING AREA
- HIGH QUALITY FIXTURE AND FITTINGS THROUGHOUT
- KITCHEN WITH BREAKFAST BAR
- 3 FAMILY BATHROOMS & DOWNSTAIRS WC
- OFF ROAD APRKING FOR 4 CARS
- LOW MAINTENANCE REAR GARDEN
- BI-FOLDING DOORS LEADING TO REAR GARDEN



Venture Residential are proud to present this immaculate and exceptionally spacious five-bedroom detached family home located on the highly desirable Fountains Road, just off the prestigious New Bedford Road—one of Luton's most sought-after locations.

From the moment you step through the front door, you're immediately impressed by the high-quality fixtures, fittings, and attention to detail that flow throughout this beautifully maintained home. Designed with both luxury and practicality in mind, this residence is perfect for families seeking versatile space, comfort, and an executive standard of living.

The ground floor offers generous living accommodation with two large reception rooms, providing flexibility for entertaining and family life. One of the reception rooms has been transformed into a stylish cinema room, complete with Sky-effect ceiling lighting, creating a truly immersive experience. To the rear, you'll find a stunning modern kitchen featuring a central breakfast bar and bi-fold doors that seamlessly open out to a low-maintenance rear garden with artificial grass—perfect for relaxing or entertaining without the upkeep.

Additional benefits on the ground floor include a separate utility area and a luxurious downstairs WC, adding convenience and a touch of elegance to the everyday.

On the first floor, the home continues to impress with three generously sized king-size bedrooms, including a master suite with a beautifully finished en-suite bathroom. A stunning family bathroom also occupies this level, complete with double sinks and premium finishes.

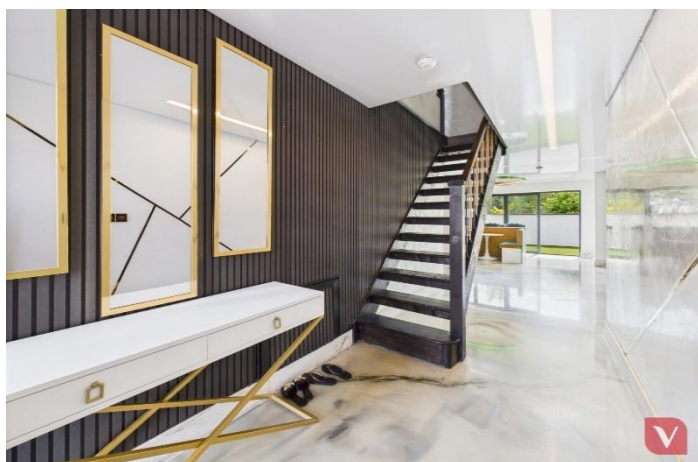
The second floor offers a further two spacious king-size bedrooms and a contemporary bathroom featuring a jacuzzi bath, perfect for unwinding in comfort and style.

Externally, the property boasts a driveway with space for up to four cars, catering to families and visitors alike.

This exceptional home is not only finished to the highest of standards but is also ideally located within proximity to highly regarded schools, Luton town centre, Leagrave and Luton train stations, and a host of local amenities—making it the ideal setting for family life.







## Notice

Please note we have not tested any apparatus, fixtures, fittings, or services. Interested parties must undertake their own investigation into the working order of these items. All measurements are approximate and photographs provided for guidance only.



**9 Compton Avenue,  
Luton,  
Bedfordshire,  
LU4 9AX**

**T: 01582 249155  
E: [info@venture-residential.co.uk](mailto:info@venture-residential.co.uk)**

