



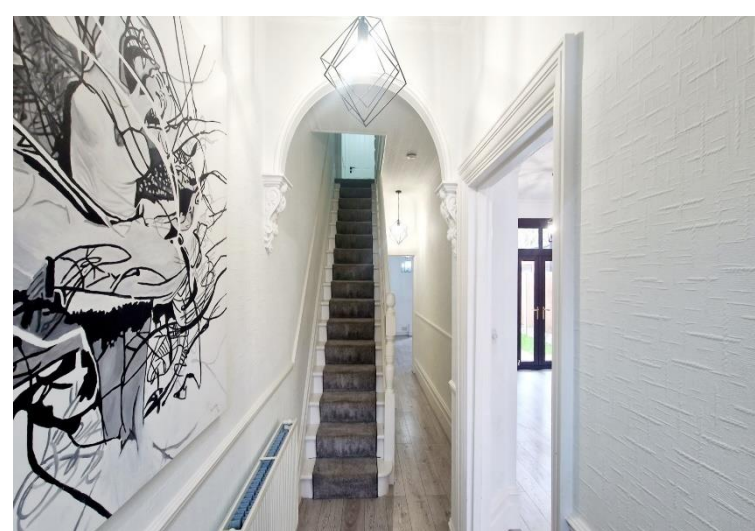
venture
RESIDENTIAL

West Hill Road, Luton, Bedfordshire, LU1 3LY

Price £550,000 Freehold



Venture Residential presents this superb four-bedroom semi-detached property is not one to be missed! Situated in the sought after area of Luton, this home boasts two spacious reception rooms perfect for family living.



West Hill Road

Luton, LU1 3LY



- Character four bedroom semi detached home
- Located in the popular South Luton
- Two spacious reception rooms
- Modern kitchen with utility room
- Family bathroom and ensuite to master bedroom
- Large rear garden
- No onwards chain
- Off road parking for multiple vehicles
- Tenants have lived in property since photos were taken



Venture Residential presents this superb four-bedroom semi-detached property is not one to be missed! Situated in the sought after area of Luton,

This home boasts two spacious reception rooms perfect for family living. The ground floor comprises of a large entrance hall leading to a bright and airy living room, a second reception room which opens up to the beautiful garden through double patio doors. The modern fully fitted kitchen provides ample storage with integrated appliances and a separate utility room leads to the side access of the property. The ground floor is completed by a convenient guest cloakroom.

The first floor offers a stunning master bedroom with an en-suite shower room, two further double bedrooms with fitted wardrobes and a family bathroom designed to a high specification. The second floor boasts a spacious bedroom.

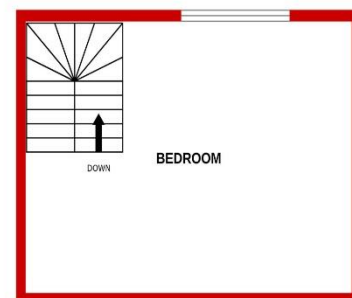
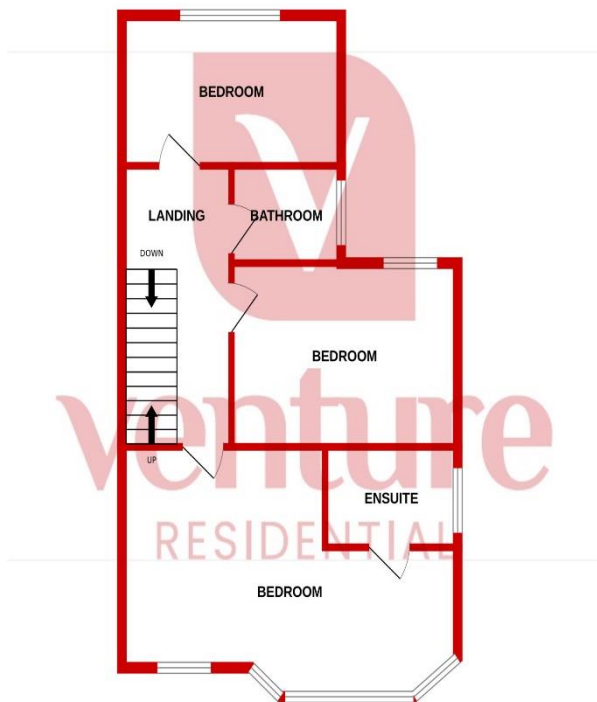
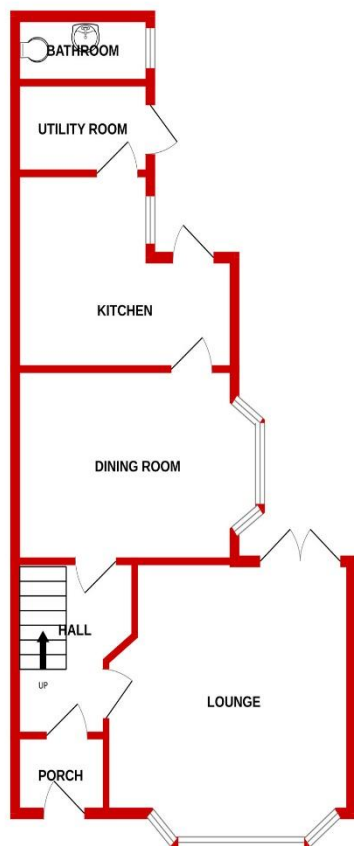
This property benefits from many features such as double glazing and gas central heating to ensure your comfort all year round. Externally, a paved driveway provides parking for two cars and the south-facing garden is a beautiful space to enjoy during the summer months.

Located in Luton, Bedfordshire, this property is ideally situated for commuters with excellent transport links, including Luton Airport Parkway Station and easy access to M1 Junction 10. Additionally, this area is abundant with fine cuisine, fantastic shopping opportunities and lively entertainment options. Take a stroll through Wardown Park and Museum and observe the picturesque English gardens and boating lake. Alternatively, enjoy a game of golf at the Stockwood Park Golf Centre. This property is perfect for those seeking a comfortable and luxurious lifestyle. Don't miss out on this remarkable opportunity!

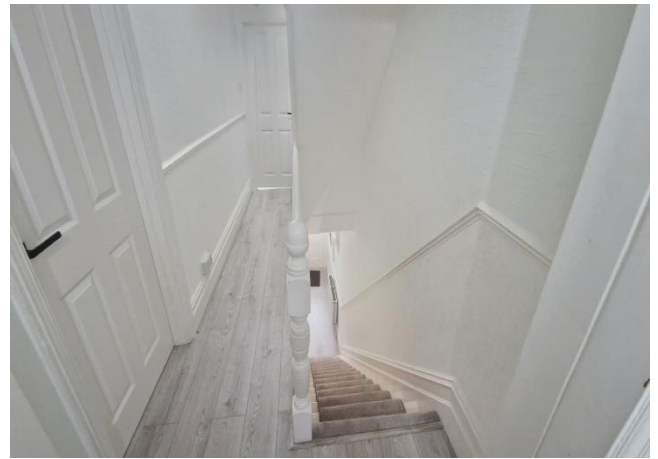
GROUND FLOOR

1ST FLOOR

2ND FLOOR



Whilst every attempt has been made to ensure the accuracy of the floorplan contained here, measurements of doors, windows, rooms and any other items are approximate and no responsibility is taken for any error, omission or mis-statement. This plan is for illustrative purposes only and should be used as such by any prospective purchaser. The services, systems and appliances shown have not been tested and no guarantee as to their operability or efficiency can be given.
Made with Metropix ©2025



Energy Efficiency Rating

	Current	Potential
<i>Very energy efficient - lower running costs</i>		
(92 Plus) A		
(81-91) B		
(69-80) C		78
(55-68) D	60	
(39-54) E		
(21-38) F		
(1-20) G		
<i>Not energy efficient - higher running costs</i>		
England & Wales	EU Directive 2002/91/EC	

Notice

Please note we have not tested any apparatus, fixtures, fittings, or services. Interested parties must undertake their own investigation into the working order of these items. All measurements are approximate and photographs provided for guidance only.



**9 Compton Avenue,
Luton,
Bedfordshire,
LU4 9AX**

**T: 01582 249155
E: info@venture-residential.co.uk**

