



Filmer Road, Luton, Bedfordshire, LU4 9BX

Price £400,000 Freehold



This stunning three-bedroom house is now available for sale in the heart of Luton, Bedfordshire. The property boasts a spacious and modern design, with two reception rooms and a large extension that provides ample living space for families or individuals alike.



Filmer Road

Luton, LU4 9BX



- Large three bedroom extended family home
- Two reception rooms
- Spacious kitchen diner
- Large rear garden
- Downstairs cloakroom & Family bathroom
- Utility room
- Off road parking for two cars
- 0.4 from Legrave train station
- Great school catchment



On the ground floor, the property features a welcoming entrance hall that leads to a bright and airy living room, perfect for relaxing and entertaining guests. The ground floor also includes a convenient cloakroom and a utility space, providing practicality and ease of use for everyday living.

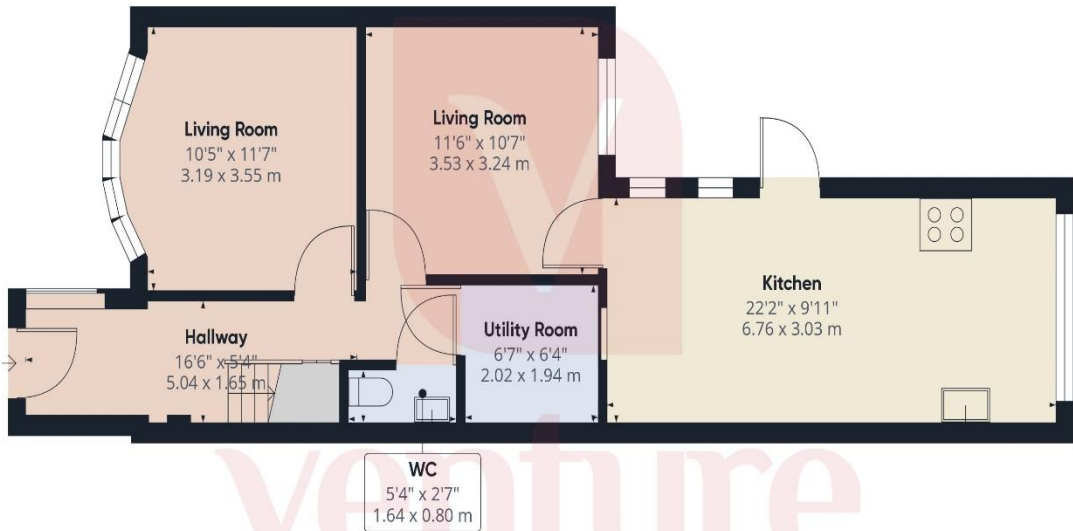
The first floor of the property comprises three generously sized bedrooms, all of which are bright and airy, with plenty of natural light. The family bathroom is also located on this floor, providing a comfortable and convenient space for all members of the household.

The property benefits from off-road parking for cars, ensuring that residents can park their vehicles safely and securely. Additionally, the property is located just a stone's throw away from Leagrave train station, providing easy access to London and other major cities.

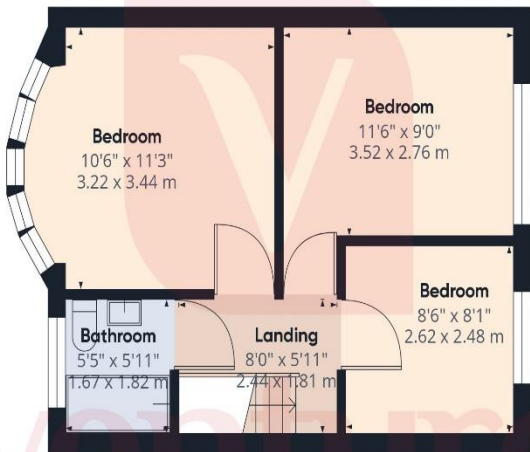
Luton, Bedfordshire is a vibrant and bustling town, with plenty of things to see and do. The town is home to a range of shops, restaurants, and cafes, providing a diverse range of options for residents and visitors alike. The town also boasts a number of parks and green spaces, including Wardown Park and Stockwood Park, providing a peaceful and tranquil escape from the hustle and bustle of everyday life.

For those interested in history and culture, Luton has a number of museums and galleries, including the Wardown House Museum and Gallery, which showcases the town's rich history and heritage. The town is also home to theatres and cinemas, providing a range of entertainment options for all ages.

Overall, this stunning three-bedroom house in Luton, Bedfordshire is the perfect choice for those looking for a spacious and modern property in a vibrant and bustling town. With its convenient location and ample living space, this property is sure to impress and provide a comfortable and convenient home for years to come.



Ground Floor



Floor 1

Approximate total area¹⁾
1022.89 ft²
95.03 m²

(1) Excluding balconies and terraces

While every attempt has been made to ensure accuracy, all measurements are approximate, not to scale. This floor plan is for illustrative purposes only.

Calculations are based on RICS IPMS 3C standard.

GIRAFFE360



Notice

Please note we have not tested any apparatus, fixtures, fittings, or services. Interested parties must undertake their own investigation into the working order of these items. All measurements are approximate and photographs provided for guidance only.



**9 Compton Avenue,
Luton,
Bedfordshire,
LU4 9AX**

**T: 01582 249155
E: info@venture-residential.co.uk**

