

venture RESIDENTIAL

Christopher Court, London, NW4 1HE
Guide Price £375,000 - £400,000 Leasehold



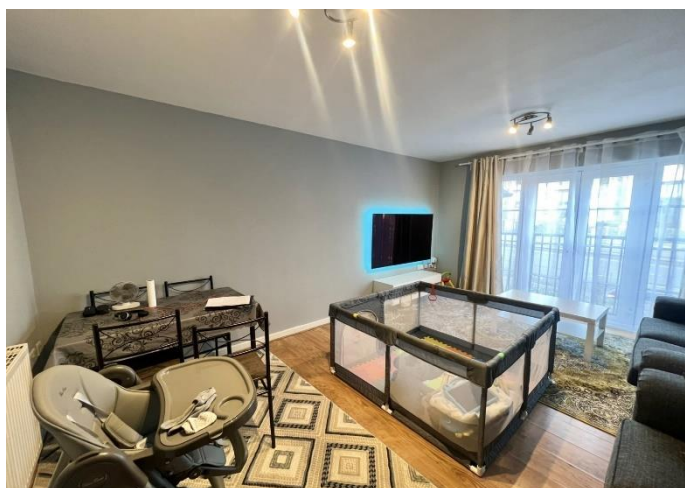
** Christopher Court**

Located in Hendon, North West London in the well desired borough of Barnet. This 2 Bed 2 Bath First Floor Apartment Presented in Modern Condition. Perfect For Commuter or First Time Buyer. Large Seperate Living Room. Kitchen/Diner. Allocated Parking Space.



Christopher Court

London, NW4 1HE



- 2 Bed 2 Bath Apartment Located in Hendon, North West London
- Popular Location For Commuters and First Time Buyers
- Great Proximity to Central London Via Train & Road
- Close To M1
- 2 Double Bedrooms With En Suite To Master Bedroom
- Great Sized Living Room
- Separate Kitchen/Diner



The apartment is presented in modern condition, offering a stylish and comfortable living space. The spacious living room is a notable feature, providing ample room for relaxation and entertainment. The kitchen/diner is well-equipped and serves as a functional space for cooking and dining.

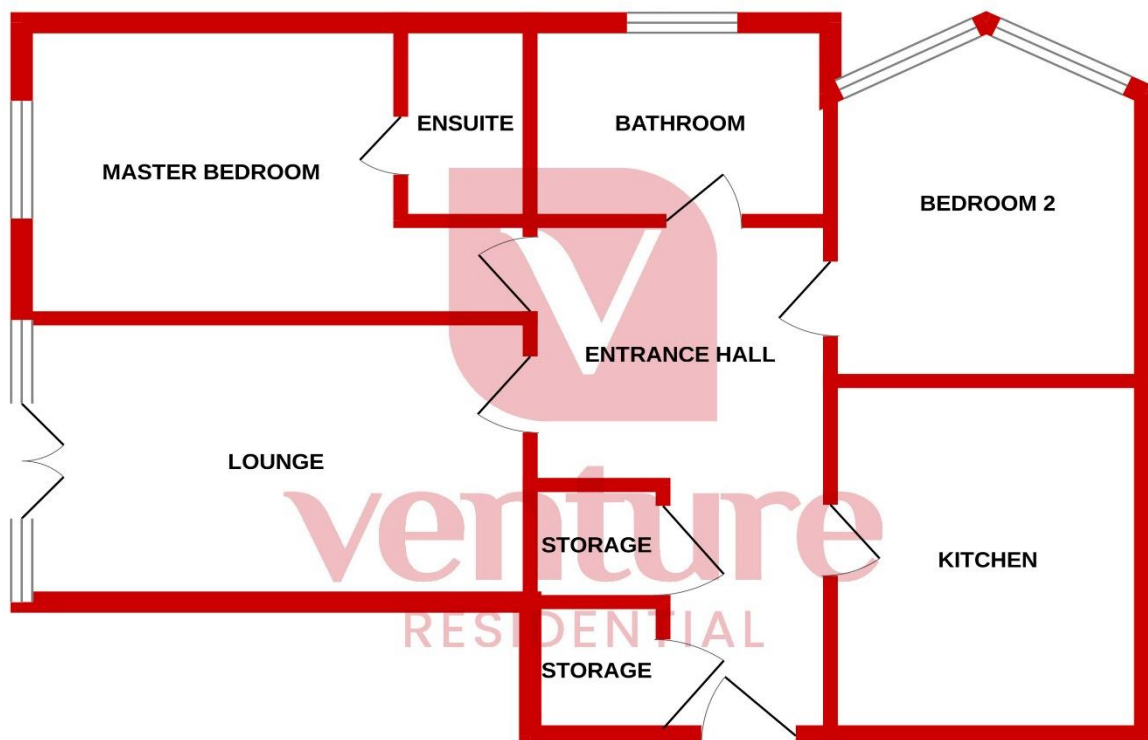
One of the key advantages of Christopher Court is the allocated parking space, ensuring convenience and ease for residents with private transportation. The property includes two double bedrooms, providing ample accommodation for individuals, couples, or small families.

The master bedroom comes with an en suite bathroom, enhancing privacy and convenience for the occupants. This feature adds a touch of luxury to the living experience within the apartment.

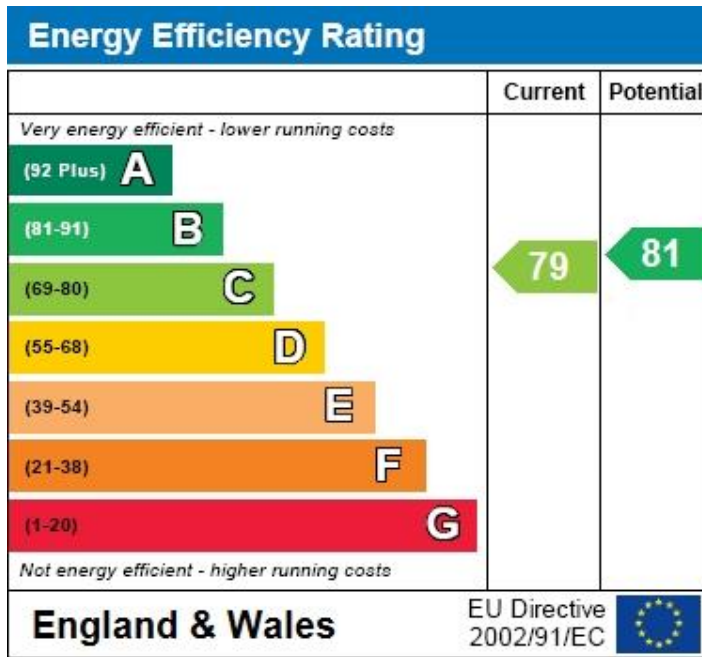
In terms of location, Christopher Court enjoys great proximity to Central London, thanks to its convenient access to Hendon Underground Station and the M1 motorway. This accessibility makes it an ideal choice for those who commute to the city regularly.

Overall, Christopher Court is a well-appointed and attractive residence, offering modern amenities, comfortable living spaces, and convenient access to both local amenities and transportation links. Whether you're a commuter or a first-time buyer, this property provides a desirable combination of style and practicality.

GROUND FLOOR



Whilst every attempt has been made to ensure the accuracy of the floorplan contained here, measurements of doors, windows, rooms and any other items are approximate and no responsibility is taken for any error, omission or mis-statement. This plan is for illustrative purposes only and should be used as such by any prospective purchaser. The services, systems and appliances shown have not been tested and no guarantee as to their operability or efficiency can be given.
Made with Metropix ©2024



Notice

Please note we have not tested any apparatus, fixtures, fittings, or services. Interested parties must undertake their own investigation into the working order of these items. All measurements are approximate and photographs provided for guidance only.



9 Compton Avenue,
Luton,
Bedfordshire,
LU4 9AX

T: 01582 249155
E: info@venture-residential.co.uk

