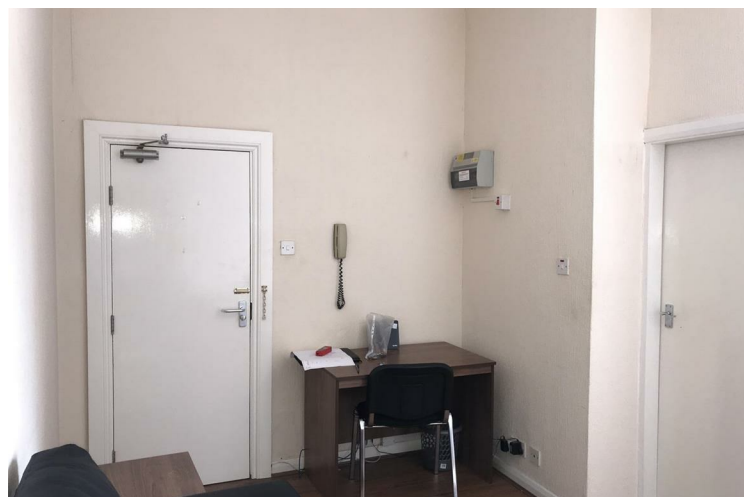




329 Beverley Road

£400



Well-Presented 1-Bedroom Self-Contained Flat – Ideal for Professionals

Rent: £400.00 PCM | Deposit: £400.00

We are pleased to offer this compact yet comfortable 1-bedroom self-contained flat, ideally suited for a single occupant. Situated in a convenient location with great access to local amenities and transport links, this property offers affordable and private living.

Property Features:

Bed-sitting room with neutral décor, perfect for sleeping and living space

Private bathroom with shower, wash basin and WC

Separate fitted kitchen with oven, hob, storage units, and worktop space

Fully self-contained with private access

Affordable, self-contained and move-in ready – available from 28th May 2025.

Contact us today to arrange a viewing!



Energy Efficiency Rating		
	Current	Potential
Very energy efficient - lower running costs		
(92 plus) A		
(81-91) B		
(69-80) C		
(55-68) D		
(39-54) E		
(21-38) F		
(1-20) G		
Not energy efficient - higher running costs		
	68	79
England & Wales		
	EU Directive 2002/91/EC	

Agents Note: Whilst every care has been taken to prepare these particulars, they are for guidance purposes only. All measurements are approximate and are for general guidance purposes only and whilst every care has been taken to ensure their accuracy, they should not be relied upon and potential buyers/tenants are advised to recheck the measurements

Tulip Hull
105-107 Cottingham Road
Hull
HU5 2DH

01482 346366
contact@tulipg.co.uk

