

# FOXRUSH WALK

Viola  
HOMES

SWEET PEA | 2 bedroom mid/end-terrace



## HOUSE STYLE FEATURES



Integrated oven,  
hob and extractor



Contemporary  
bathroom



Turf to  
rear garden



Open plan  
living area



French doors  
to rear garden



Downstairs  
cloakroom



Flooring to kitchen  
and bathroom



Air source  
heating

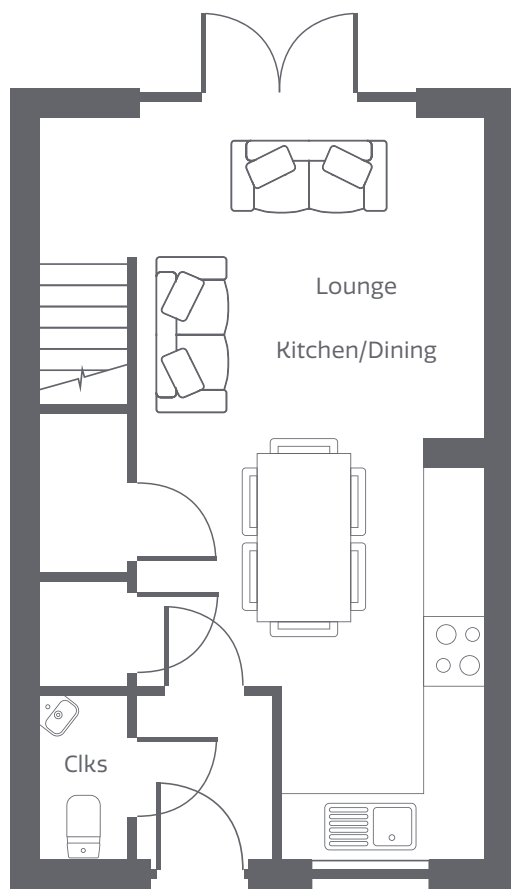


Two parking  
spaces



12-year NHBC  
warranty

## Ground floor



### Lounge

4.605m x 3.341m (15' 1" x 10' 11")

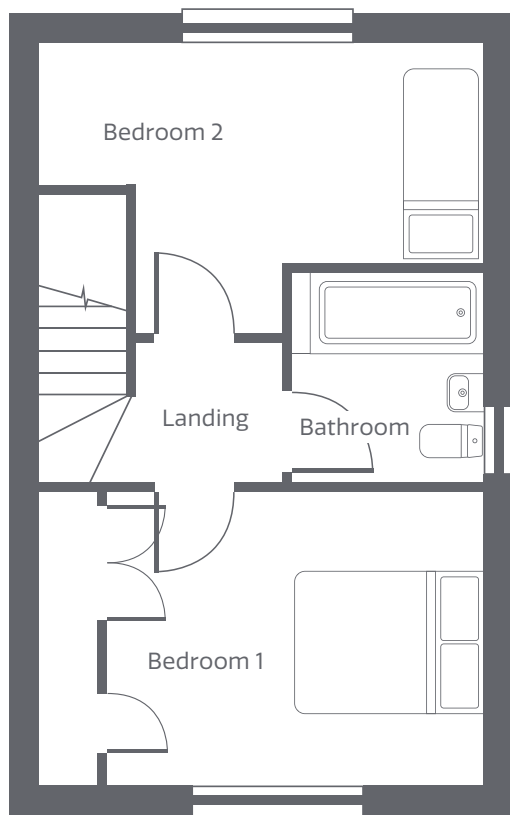
### Kitchen/Dining

3.626m x 4.471m (11' 10" x 14' 8")

### Cloakroom

0.904m x 1.689m (2' 11" x 5' 6")

## First floor



### Bedroom 1

4.605m x 3.046m (15' 1" x 9' 11")

### Bedroom 2

4.605m x 3.013m (15' 1" x 9' 10")

### Bathroom

1.979m x 2.191m (6' 5" x 7' 2")