



CARLILL HOUSE

ROYAL CRESCENT



Simply the best Sea Views...

Location, location, location....

That's what the presenters on all the television programmes say and when it comes to Carlill House that certainly is true with Whitby's golden beaches, West Cliff amenities and Whitby Town Centre all with easy reaching distance.

Formerly 'The Carlill' hotel it has now been transformed into 'Carlill House' which offers fifteen luxury one & two bedroom holiday apartments with all the apartments from the upper ground floor enjoy stunning sea views from this impressive building.



Nick Henderson MNAEA MARLA
Hendersons Property Consultants



HENDERSONS





From the developers of The Engine Shed...

Peter & Andrew had a clear vision to give the old engine shed the sustainable future it deserved, creating a unique experience and transforming it into the holiday venue of choice.

They even brought the north end back to life by rebuilding it and restoring it to its former glory. Whitby Engine Shed now provides 11, highly rated and highly popular, luxury holiday homes.

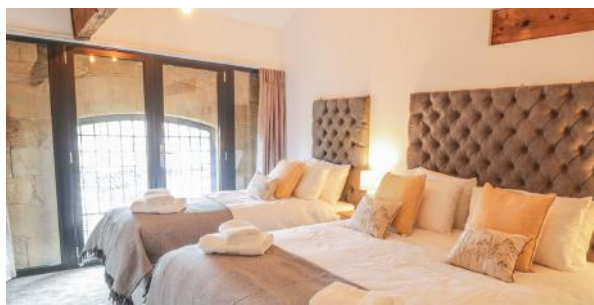
The developers aim for Carlill House is to build a sustainable future for another of Whitby's historic buildings while providing Luxury Holiday Accommodation for those visiting one of the United Kingdom's most popular Coastal Towns.

The Engine Shed



You can expect the same high standards at Carlill House, which were achieved at the Engine Shed.

Images are from the beautiful collection of holiday apartments found at the Engine Shed in Whitby.







What is Whitby Famous for?

Well you have the whaling industry, Whitby Goth festival, Dracula, 199 steps, Whitby Abbey, the best fish and chips in the world and simply one of the best tourism hot spots on the Yorkshire Coast. Whitby unspoilt by modern day life still retains all its character and charm which make it so popular with visitors.

A person wearing a striped shirt and purple shorts is walking a small, light-colored dog on a wooden pier. The pier has a white metal railing and extends into a vast blue ocean. The sky is bright blue with scattered white clouds. The text "What are you waiting for?" is overlaid in white on the pier and ocean.

What are you waiting for?

Whitby has seen a huge increase in popularity over the last twenty years but recently became the No.1, most in demand seaside town in a recent survey by Rightmove. With people opting for an investment by the sea rather than shares in a FTSE 100!



COASTAL LIVING

There is more to Whitby than the famous 199 steps, Dracula or Captain James Cook.

Whitby over the recent years has become a great place to wine and dine on an evening, from cocktails at Harry's Bar to famous fish & chips at the Magpie or how about award-winning chef Andrew Pern's Star Inn in the Harbour.

There is always something going on in Whitby, which now operates an all-year-round tourism calendar, so where better to invest.



1. Whitby Beach huts
2. View from the East Cliff looking over to the West Cliff and Sandsend beyond
3. A whitby Seagull
4. Historic ruins of Whitby Abbey

Royal Crescent

George Hudson was an English railway financier and politician (he was MP for Sunderland) who, because he controlled a significant part of the railway network in the 1840s, became known as "The Railway King". Hudson had long standing business interests in Whitby and the building of the railway led Hudson to form and become the chairman of The Whitby Building Company, which developed the West Cliff area of the town in the 1850s, which is when the Royal Crescent was built. He was joined by George Townsend Andrews, who also became a Director of The Whitby Building Company. Andrews was a renowned architect who designed the Station and the Engine Shed in Whitby.



Carlill House

Built in the 1850s alongside other guest houses and hotels, Carlill House has had several incarnations. It now combines numbers 13 and 14 Royal Crescent. The earliest records of number 13 call it Victoria House, believing it to have been renamed The Carlill by Thomas Carlill Foxton in honour of his mother in the 1870s. Number 14 was without a name until sometime into the 20th century until it became Alpha and then Avalon, finally being amalgamated in 1981 with The Carlill. For 2021, having undergone it's transformation to 15 luxury apartments, it is now being renamed Carlill House.



From day trips to Holidays

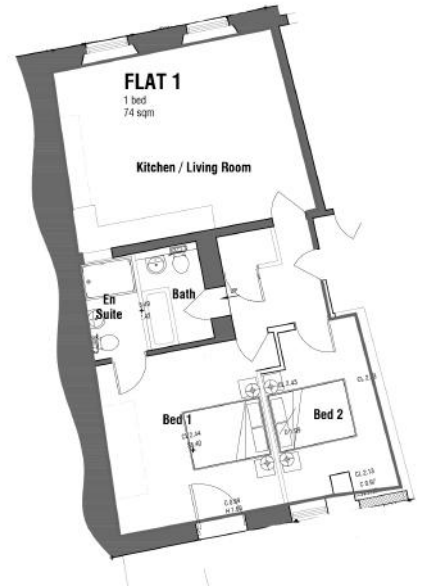
Hudson's railway link to Whitby opened up the town as a favourite destination for large numbers of factory workers from the West Riding and beyond. Day trips became possible and affordable. Longer stay holidays were becoming popular too. Guest houses and hotels were developed on the west cliff and Hudson had the Khyber Pass engraved into its face to transport the building materials for the development of his Royal Crescent. It can be noted though, that the crescent is only "half built". Its full development was cut short at a time when Hudson simply ran out of money.

Lower Ground Floor

The Baxter

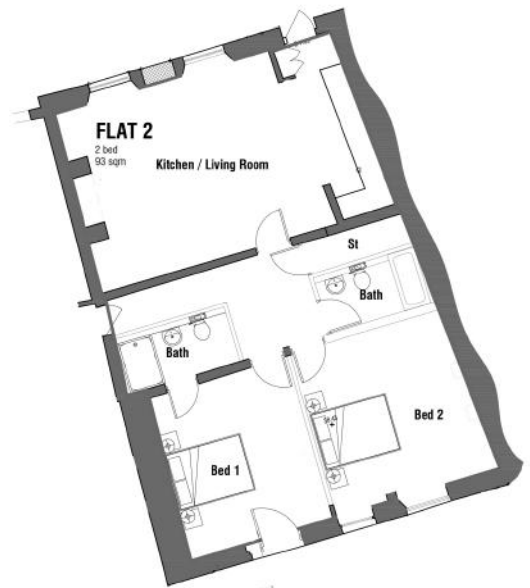
Apartment 1 - 2 bedrooms - 73m²

Sidney Baxter married Lillian Frampton in Bradford in 1935. At the time of the pre-war census in 1939 he was a tea salesman and she an usherette. It is understood that they bought No.14 Royal Crescent with demob money after the war. By the time they sold no.14 in 1981, it had been renamed to 'Avalon', in the pre-war census of 1939 it was known as 'Alpha' so it is very likely that Lillian and Sidney renamed it. In 1981 the brand of Avalon disappeared as it was subsumed into the Carlill.



The Frampton

Apartment 2 - 2 bedrooms - 90m²

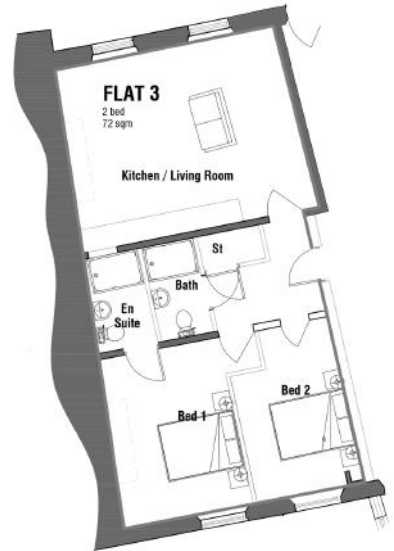


Upper Ground Floor

The Galley

Apartment 3 - 2 bedrooms - 69m²

Living in 14 Royal Crescent in 1939 was the master mariner of the SS Saltwick and merchant navy reservist, Thomas Galley. On the 1939 pre War census, no.14 is known as "Alpha". Aged 26 in 1920 Thomas married Mary Mildred Hoggart in Kildale, North Yorkshire. In 1939 at Alpha, they lived with their two daughters Audrey M and Jean M.



The Chilton

Apartment 4 - 2 bedrooms - 94m²

Farmer, Ian George Hector Chilton married Jean Ashby in 1965. They bought no.13 Royal Crescent in 1977 having been looking to move to Whitby and have a guest house. In 1981 they acquired no.14 from Sidney and Lillian Baxter and joined the two together. In the 1980s, ITV made a television series called 'One summer in Whitby', including one specific episode that featured the Carlill and life running the guesthouse.

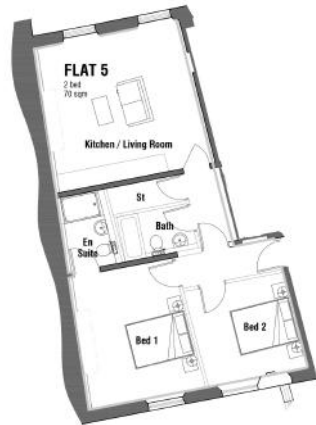


First Floor

The Connell

Apartment 5 - 2 bedrooms - 67m²

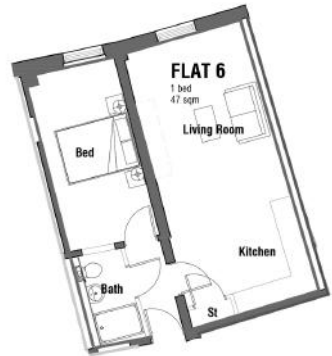
Eliza E Connell was a widow living with her son, Harold AC Connell, aged 9, in 14 Royal Crescent in the 1911 census. Eliza aged 36 was a widow living by private means, looking after 19 rooms with the assistance of 5 servants.



The Mundy

Apartment 6 - 1 bedroom - 46m²

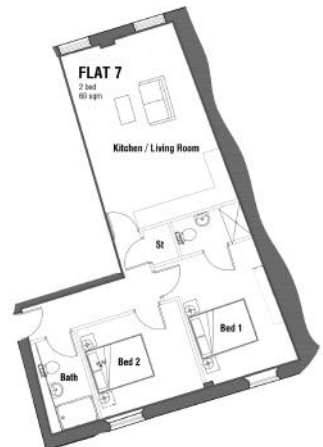
In the 1939 Pre-war census, James Mundy was head of a boarding house at 13 Royal Crescent which he ran with Louisa, his wife and with their married daughter Elsie Sarah Hole and her husband .



The Arrowsmith Foxton

Apartment 7 - 2 bedrooms - 67m²

Emily Arrowsmith-Foxton was a Lodging housekeeper of 22 rooms in 13 Royal Crescent in 1911 census. Emily is the daughter of Thomas Carlill Foxton and his wife Maria who had all previously lived here in 1871

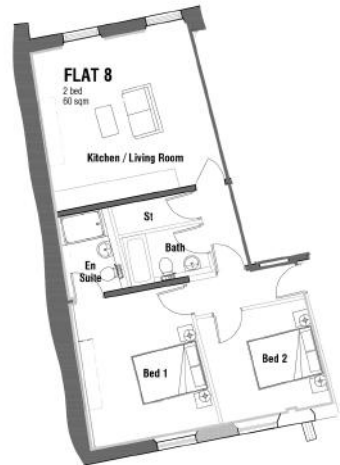


Second Floor

The Bourne

Apartment 8 - 2 bedrooms - 67m²

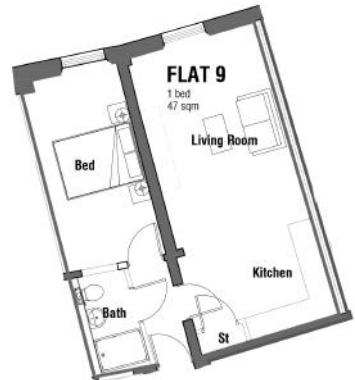
John Greenwood Bourne was a schoolmaster running a school within 13 Royal Crescent and this is evidenced on the 1901 census. By the time of 1911 Census the school had moved to Sneaton Castle, Whitby.



The Burdon

Apartment 9 - 1 bedrooms - 46m²

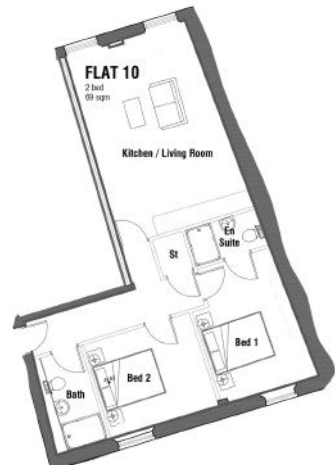
Lydia Burdon is listed as Lodging Housekeeper and the Head of the Household of 14 Royal Crescent on the three census returns of 1871, 1881 and 1891



The Weston

Apartment 10 - 2 bedrooms - 67m²

Lydia Weston was the niece of Lydia Burdon and lived with her in 14 Royal Crescent. Their stay covered the three census returns of 1871, 1881 and 1891.

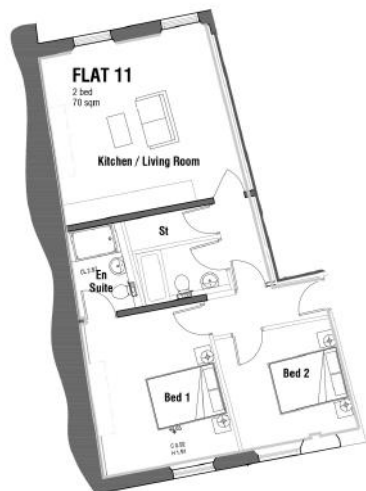


Third Floor

The Lawson

Apartment 11 – 2 bedrooms – 67m²

John Nicholas Lawson, a local man returned to Whitby to work as a clerk in an iron Shipbuilding office. In 1891 aged 67, he lived in no.13 Royal Crescent with Eliza Ann Lawson his wife aged 71 and their daughter, Ann Eliza Lawson aged 37



The Stangoe

Apartment 12 – 1 bedroom – 40m²

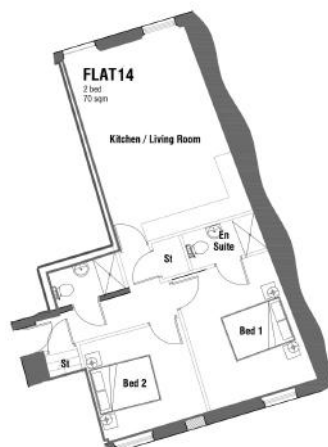
In 1861 Anne Stangoe lived in 13 Royal Crescent as a lodging housekeeper with her two young sons John and Richard William. She was 25 years old and already a widow at such a young age.



The Hudson

Apartment 14 – 2 bedrooms – 68m²

Nicknamed “The Railway King”, George Hudson was an English Railway financier and politician, who controlled a significant part of the railway. Hudson formed and became the chairman of the Whitby Building Company, which developed the West Cliff area of the town in the 1850s which is when the Royal Crescent was built .

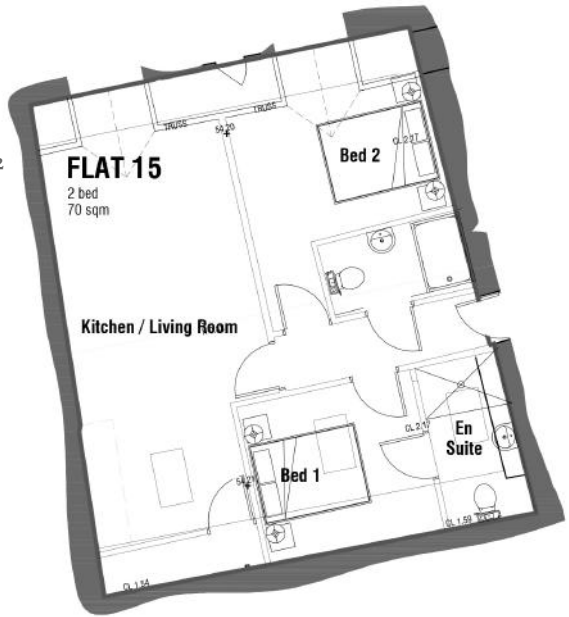


The Penthouses

The Foxton

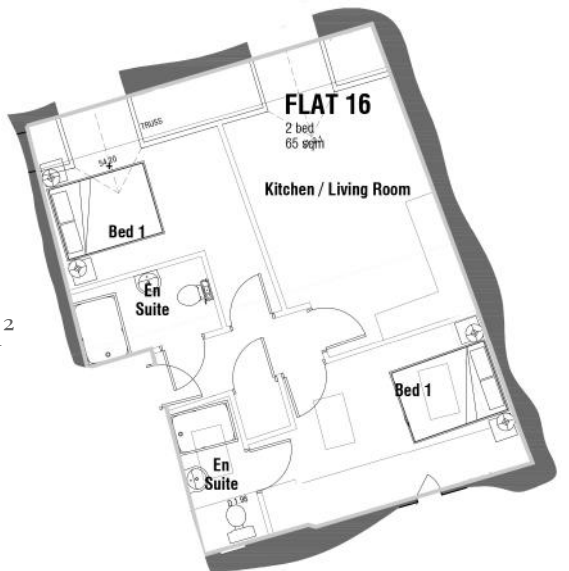
Apartment 15 - 2 bedrooms - 73m²

John Foxton a mariner married Mary Carlill on the 25/02/1810 at the St Mary the Virgin Church in Whitby. Their son Thomas Carlill Foxton married Maria Cowart and in 1871 Thomas and Maria lived in 13 Royal Crescent with their daughters: Eliza M, Maria, Fanny and Emily. Thomas was a member of the Whitby Mutual Insurance Club. It is understood that Thomas named the building 'Carlill' in honour of his mother Mary.

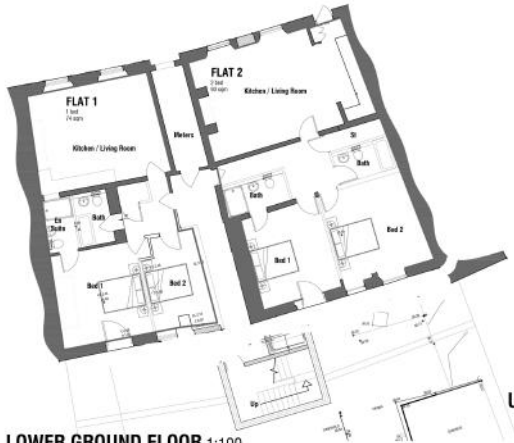


The Carlill

Apartment 16 - 2 bedrooms - 69m²



Overall Floorplans



LOWER GROUND FLOOR 1:100



UPPER GROUND FLOOR 1:100



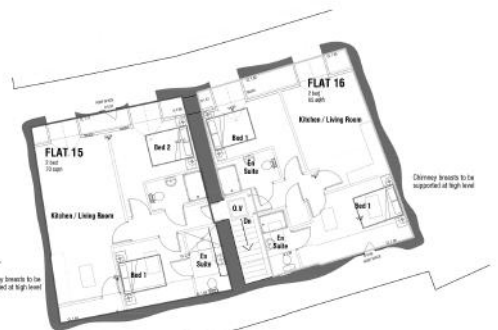
FIRST FLOOR 1:100



SECOND FLOOR 1:100



THIRD FLOOR 1:100



PENTHOUSES 1:100

Specification

What to expect at Carlill House

GENERAL

- Brushed chrome Electrical fittings.- sockets and switches
 - LED Downlighters throughout
 - Broadband & BT ready
- Electric heating (Wifi operated) and hot water cylinder
 - Intercom
- Flooring- Solid Bamboo flooring to kitchen and lounge with carpets to bedrooms and hallway.
 - Oak veneer internal doors
- UPVC Double glazed sliding sash windows to the front and UPVC casement windows to the rear

KITCHENS

- Wren/Howdens Gloss kitchen units with integrated handles
 - Quartz worktops
- Customised glass splashbacks above all worktops. Choice of colour with early reservations.
- Integrated appliances: (AEG & BOSCH) oven, ceramic hob, fridge/freezer dishwasher, washer dryer & microwave.
 - Undermounted stainless steel sink

BATHROOM

- Porcelanosa Sanitaryware: W.C, hand basin and bath with mains shower above. (Some apartments may have a shower, as described under en-suites, rather than a bath)
- Full height Porcelanosa glazed wall tiling and floor tiling
 - Chrome Heated towel radiators
 - Back Lit LED mirror

ENSUITE

- Porcelanosa Sanitaryware: W.C, hand basin and mains shower.
- Shower – Low profile shower tray and glass screens
 - Back Lit LED mirror
- Full height Porcelanosa wall tiles with feature wall

The perfect property investment

If you are thinking of investing, Whitby certainly should be the top of your list and Carlill House at the top of that list. Located on the ever popular West Cliff, Carlill House offers holiday makers exactly what they are looking for, stunning sea views, easy access down to the beach, short walk into town and all from your elegant apartment.

Based on estimates provided by local holiday letting experts Host and Stay North Yorkshire, the potential Forecasted Gross Revenue can be up to £37,500 in the first year and rising up to £44,100 in the fourth year.





To find out more about these luxury apartments and to book an appointment contact a member of the Hendersons team on: 01947 602626.





Hendersons Estate Agents
21 Flowergate, Whitby, North Yorkshire
YO21 3BA
+44 (0)1947 602626
info@myhendersons.co.uk