



Uppang Lane, Whitby, YO21

**Guide Price £349,950**

**hendersons.**  
estate agents





*Retaining character and perfectly laid out for modern family life, this spacious 1930s semi-detached home combines traditional features with bright, versatile living spaces.*







# Key Features

---

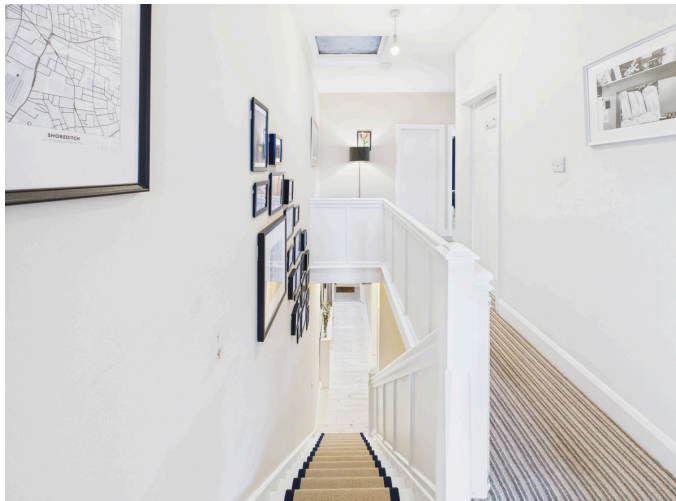
- Four Bedroomed Semi Detached Property
- Desirable Location
- Perfect Family Home
- Recently Upgraded
- Private Parking
- Detached Garage













Upon entering via the super stylish entrance hall the tone is set, with original balustrades and internal doors adding charm and continuity throughout. From here, you're drawn into a generous lounge with new flooring recently fitted, a large bay window, and an attractive feature fireplace — a welcoming, light-filled space to relax in.

The heart of the home lies to the rear, where the family kitchen — fitted with traditional white cabinetry, a practical tiled splash-back and integrated oven and gas hob — opens out into a large dining room. This flexible space flows well into the conservatory, making it ideal for everyday family life and entertaining alike.

Upstairs, the spacious landings enhance the sense of light and space. There are four bedrooms, one of which is currently utilised as a home office space. The house bathroom is fitted with a classic white three-piece suite and a shower over bath.

Externally, the property benefits from a paved driveway, a detached garage, paved patio area and a low-maintenance south-facing rear garden — a lovely sun trap for summer days.

A home with real soul, this is a fantastic opportunity to secure a characterful property with room to grow in a very popular and well-connected location, just a few minutes from the beach, the centre of town and good local schools.



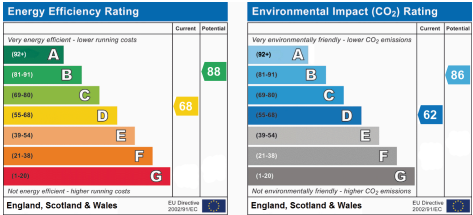
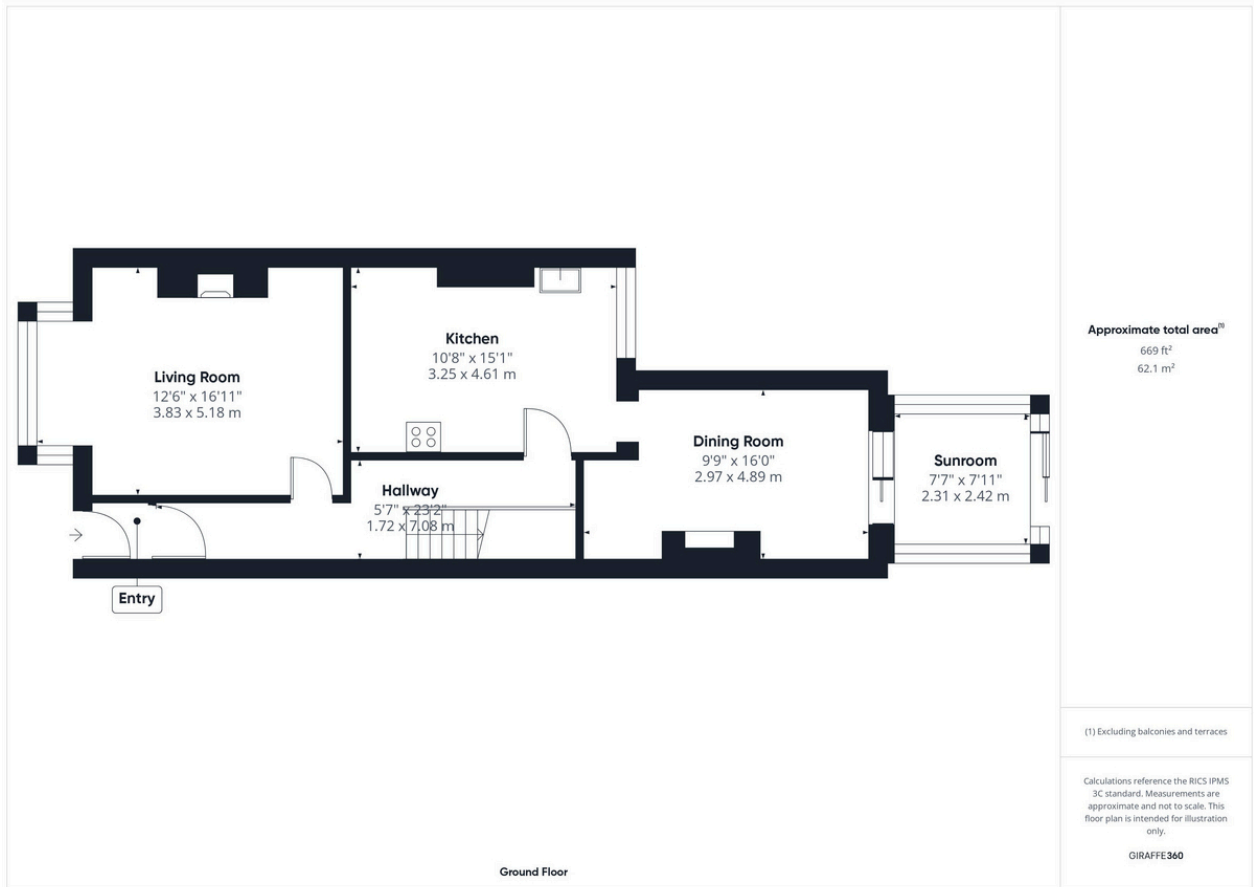












**Tenure Type:**  
**Council Tax Band:** C  
**Council Authority:** North Yorkshire