

The Kilnsey

 3 Bedroom Semi-detached Home



Plots 28, 29 & 61

This modern new-build home comprises three bedrooms to the first floor, with an ensuite to the master bedroom. The ground floor features an open-plan kitchen/diner with integrated premium appliances. There is also a separate living room perfect for relaxing with the family, along with a handy downstairs WC. To the rear is a turfed private garden, whilst to the front, there are two useful parking spaces.

Key features

- Block paved parking area
- Designer kitchen
- Bosch appliances
- Energy-saving solar panels
- Open-plan kitchen/diner
- Spacious living room
- Ensuite to master bedroom
- Energy efficient
- Three bedrooms
- Downstairs WC
- Turfed garden

"your dream Whitby home..."

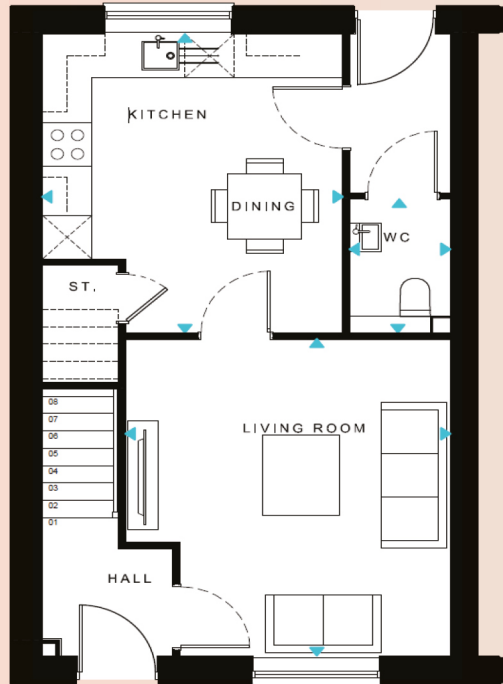
 01947 602626

 eskdaleview@myhendersons.co.uk

Whitby Coastline

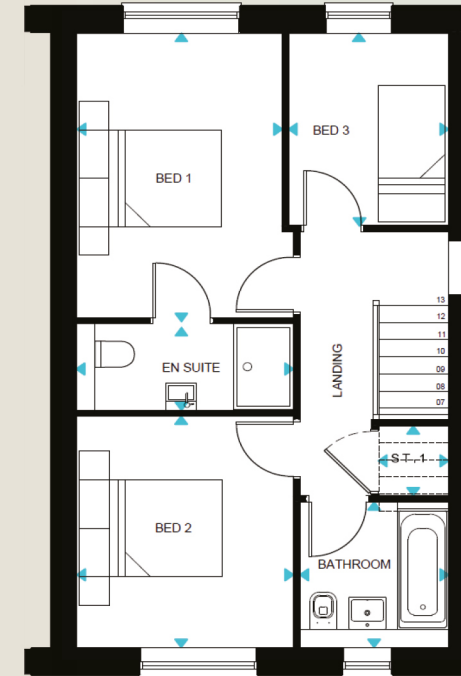
hendersons.
estate agents

The Kilnsey








Ground Floor

	Kitchen/Dining	3650 X 4120 mm
	Living	3940 X 4360 mm



First Floor

	Bedroom 1	2740 X 4030 mm
	Ensuite	2890 X 1150 mm
	Bedroom 2	2890 X 3220 mm
	Bedroom 3	2120 X 2680 mm
	Bathroom	1980 X 2030 mm



Information contained within this brochure is for guidance only. Wharfedale Homes Ltd operates a policy of continuous development and features may change. It should be noted that while artist's impressions, models and photography are as accurate as possible they are only representative. These particulars should not be relied upon as accurately describing any of the specific matters prescribed by any order made under consumer and business protection regulations. This information does not constitute a contract, part of a contract or a warranty. All measurements are scaled from plans and some may be varied during construction. Restrictive covenants will apply; please refer to selling agent for further details.