



Iburndale Lane, Whitby, YO22

Guide Price £425,000

Hendersons

www.myhendersons.co.uk | 01947 602626

hendersons.
estate agents



- Refurbished to a high Standard
- Dorma Bungalow
- 4 Bedrooms
- 2 Bathrooms
- Multi Fuel Log Burner
- Desirable Rural Location
- Sun Room
- Garage with Driveway

Nestled in the scenic surroundings of Iburndale Lane, this dormer bungalow presents a well-thought-out refurbishment, perfect for family living. Offering four bedrooms and two bathrooms, the property provides ample space and comfort. The multi-fuel log burner adds a cozy touch to the living area, creating a warm atmosphere during cooler months.

The bungalow boasts a sun room that provides that all important extra living space. The quality finish throughout is evident in every single room, with a focus on modern living standards while retaining charm. The garage with newly fitted electric door and driveway ensures convenient parking and storage options.

The hamlet of Iburndale is located close to schools, shops, a doctors surgery and fantastic walking routes. This property provides an excellent opportunity to settle in a desirable neighbourhood.

Act now to secure this exceptional property in Whitby. With its quality features and rural location.



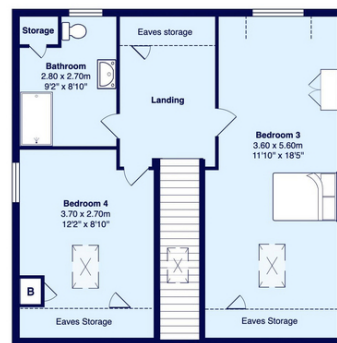
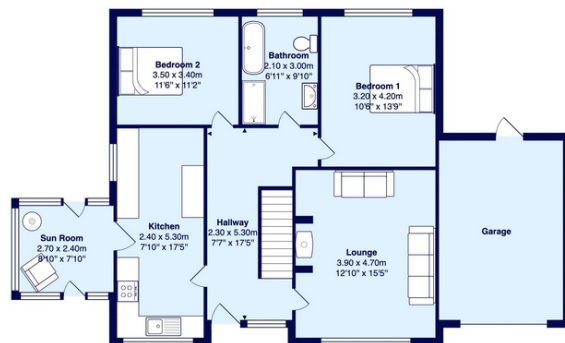


 4

 2

 1





All measurements are approximate and for display purposes only
©Henderson Property Services (Yorkshire) Ltd

