



Browside, Scarborough, YO13

**Offers Over £795,000**

**hendersons.**  
estate agents





*Occupying arguably, one of the most enviable positions along the North Yorkshire Moors coastline, offering breathtaking views out towards Robin Hoods Bay and the surrounding countryside.*





# Key Features

---

- Breathtaking Sea Views
- Planning permission obtained to install UPVC windows
- 4 Double Bedrooms
- Spacious reception rooms
- Garage
- Character Property
- Rural Location
- Feature Log Burner
- Wooden Flooring
- Stunning views of the countryside















This traditional stone built, detached cottage offers four double bedrooms and spacious living areas, the principal rooms all delivering those stunning moor and coastal views.

The cottage comprises of a very generously proportioned sitting room, with character fireplace, having a marble insert and wooden surround. There are double doors leading across the light and airy hallway, on to the contemporary breakfast kitchen that features a desirable central island, granite worktops, integrated appliances, wine cooler and feature log burner, making for a truly fabulous entertaining space. There is also a useful cloakroom to this floor.

With four double bedrooms to the first floor, all of which feature real wood flooring and the main having an ensuite. There is also a family bathroom with white three piece suite and shower over bath.



Externally, as well as the picturesque gardens from which to enjoy those stunning panoramic views there is a garage with further parking. Planning permission has been obtained in order to replace the windows at Howdale School Cottage.

Heated via oil fired central heating, a septic tank also serves this property. Please note a 'Court Leet' payment of £105 per year is payable on this property.

Viewing of this property is highly recommended to appreciate all this beautiful property has to offer, call a member of the friendly team at Howdarsons to arrange a viewing appointment.



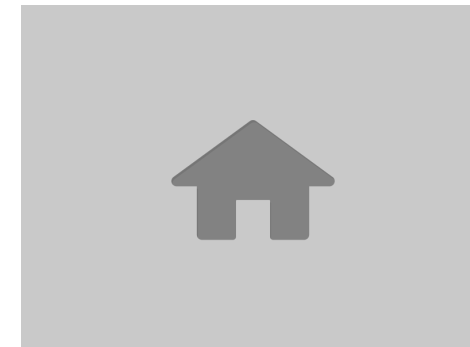
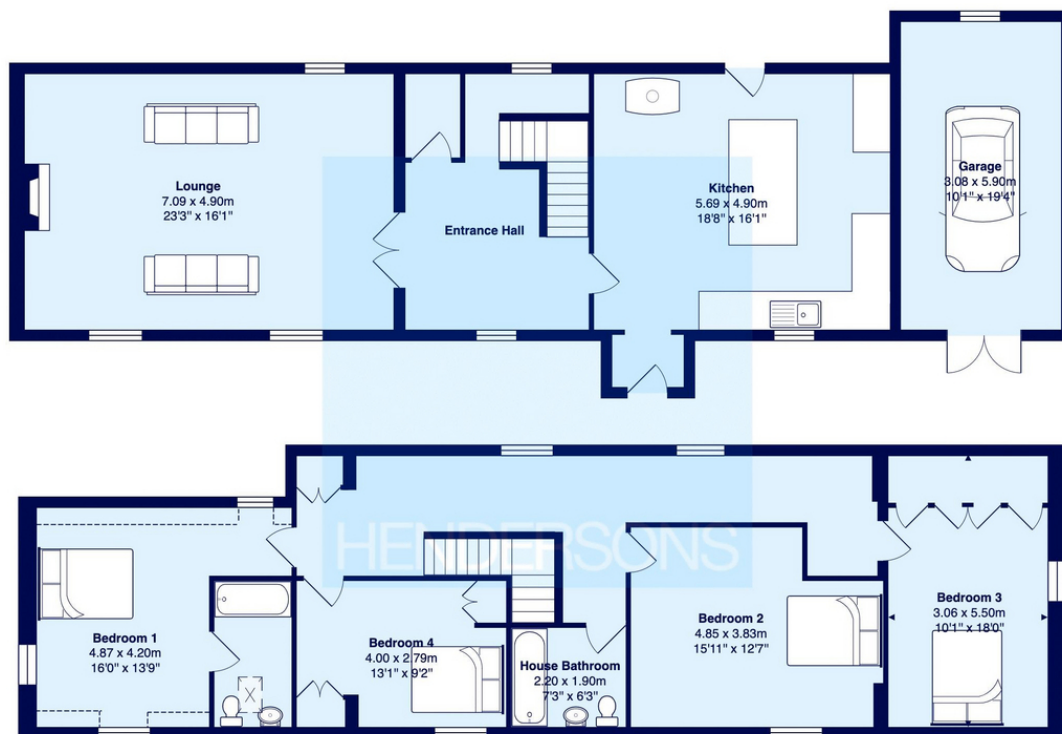












**Tenure Type:** Freehold  
**Council Tax Band:** D  
**Council Authority:**