

A stone mill house with a red tiled roof, surrounded by lush greenery and a stone wall with a waterfall. The house is built of light-colored stone and has a gabled roof. In front of the house is a stone wall with a waterfall on the left side. The scene is set in a rural, wooded area.

HENDERSONS

# THE OLD MILL

Littlebeck, Whitby, North Yorkshire



## THE OLD MILL, LITTLEBECK

Henderson introduce 'The Old Mill' which from the name, you can guess, this was the old flour mill, complete with the original water wheel. This three double bedroom property offers both a great space but also outlook, looking back over the the weir and up the river, is simply stunning.

There is a large kitchen/dining room, along with a useful w.c, spacious lounge with log burner to the ground floor. An impressive family bathroom featuring a roll top freestanding bath and separate shower cubicle compliment the house bathroom. There is a double bathroom, en-suite shower room and covered in outside terrace off the landing. To the second floor there are two double bedrooms both with a range of fitted cupboards.

Externally there is a patio area, level gardens, summerhouse and wooden playground. There is parking to the rear of the property.

Again, early interest is advised as to avoid disappointment. Available on a 12 month ongoing assured shorthold tenancies if suitable to both parties.

**£1,500 Per Calendar Month**

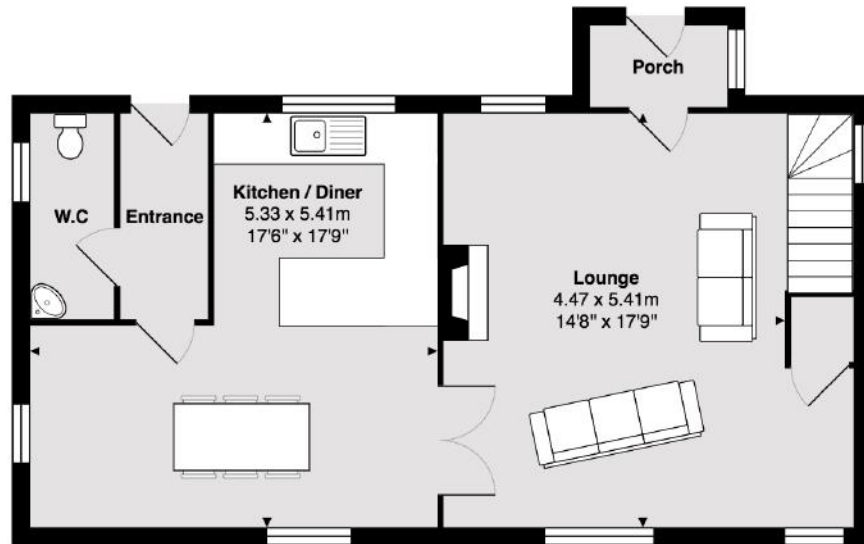
**£25 pcm Broadband Charge**

(Fully Furnished Property, Included water rates but excludes oil, council tax and electricity)

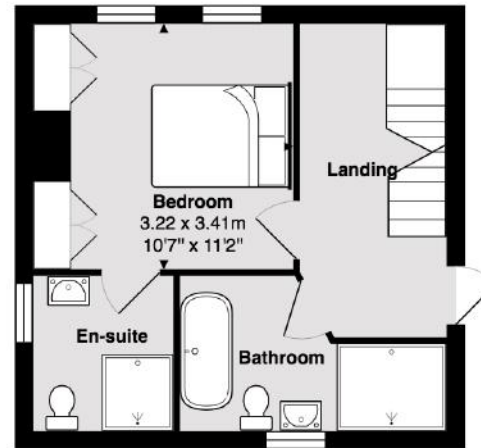




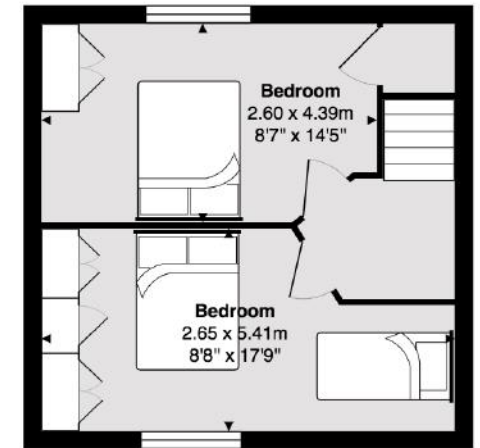
# FLOORPLANS



Ground Floor



First Floor



Second Floor





Henderson Property Services (Yorkshire) Ltd.  
21 Flowergate, Whitby, North Yorkshire YO21 3BA  
01947 602626 | [info@myhendersons.co.uk](mailto:info@myhendersons.co.uk) | [www.myhendersons.co.uk](http://www.myhendersons.co.uk)

