

DEVELOPMENT AT EGTON

WINDY RIDGE, EGTON
NORTH YORKSHIRE
YO21 1UE



Guide Price £260,000

The Details...

An exceptional development opportunity in a sought-after village within the North York Moors National Park. Planning permission has been granted for the construction of five new homes on the village outskirts, with no local occupancy or affordable housing restrictions. The new homes will consist of 1 x two bedroom dwelling and 4 x three bedroom dwellings.

Location

This site is located on the eastern edge of Egton, a highly desirable village in the North York Moors National Park, just 7 miles from Whitby. The village is surrounded by open countryside while still offering convenient access to the A171, which links Scarborough (25 miles) with Middlesbrough (26 miles).

Egton offers a range of amenities including a primary school, doctor's surgery, pubs, a garage, and a railway station on the Esk Valley Line, providing a direct link between Whitby and Middlesbrough. For everyday essentials, a Co-op in Grosmont is only 1.4 miles away. Nearby Sandsend, just 6.6 miles away, is a popular seaside village known for its long beach, cafes, restaurants, and pubs.

Tenure and Possession

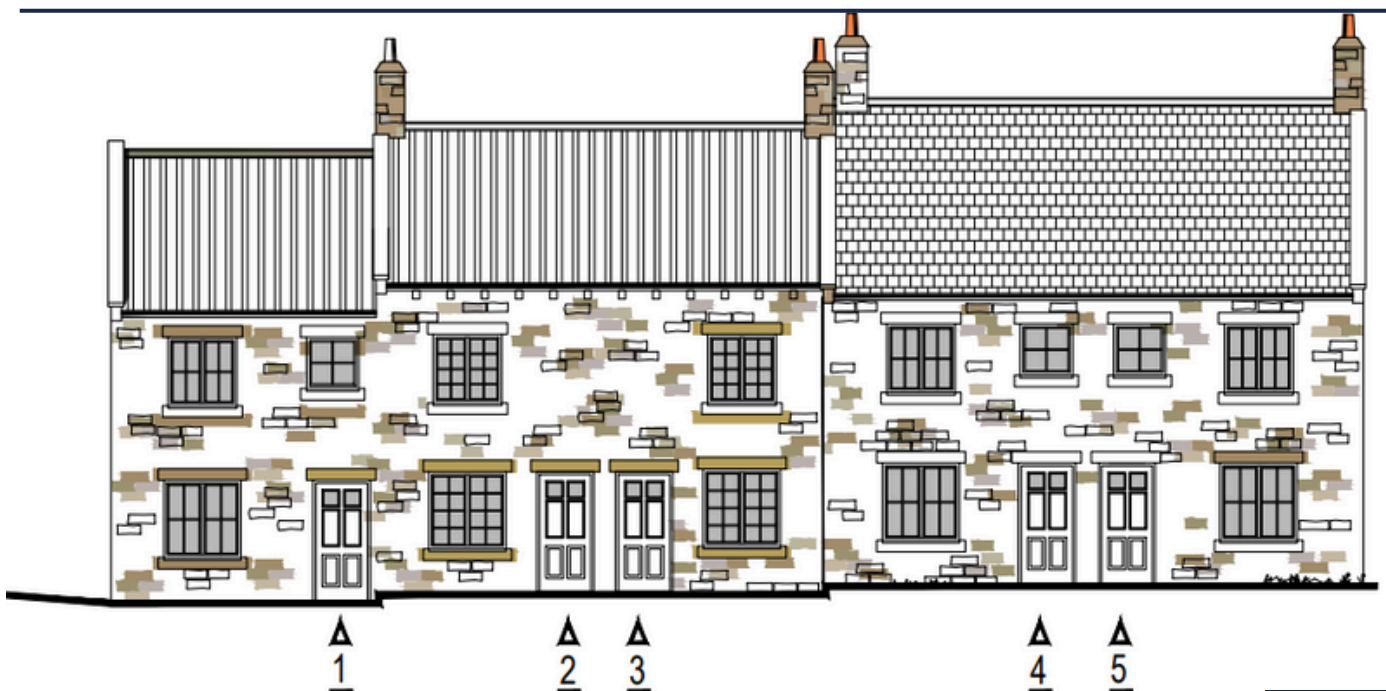
The property is being sold freehold, with vacant possession available upon completion.

Planning

Full details of the approved plans and associated documents can be found on the North York Moors National Park Authority's website using the application reference: NYM/2020/0683/FL. The planning consent includes a condition that requires the homes to be principal residences, occupied by the main resident for at least 80% of the year, and not used as second homes.

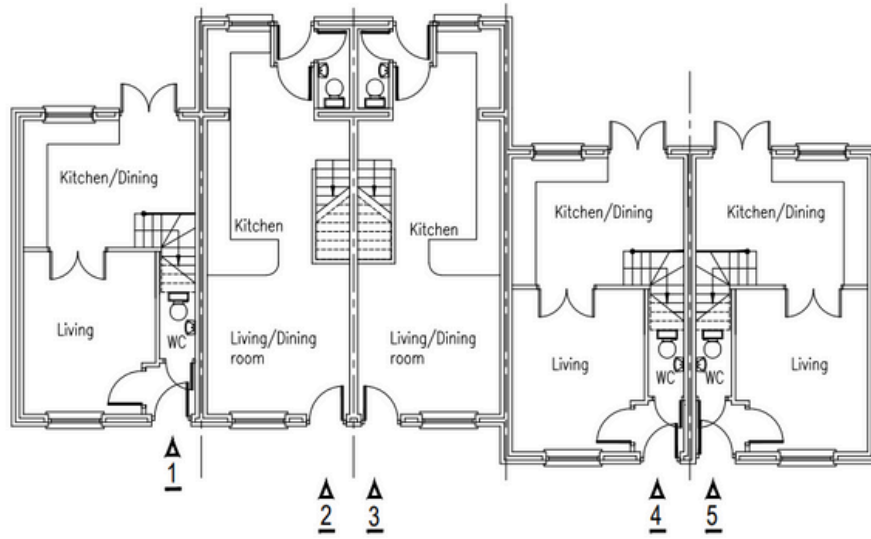
Services

- Water Supply: The purchaser is responsible for establishing a connection to the mains and should contact Yorkshire Water for further details.
- Electricity: The purchaser must arrange their own connection and should contact Northern Power Grid.
- Drainage: The purchaser will need to establish a connection and should make inquiries with Yorkshire Water.

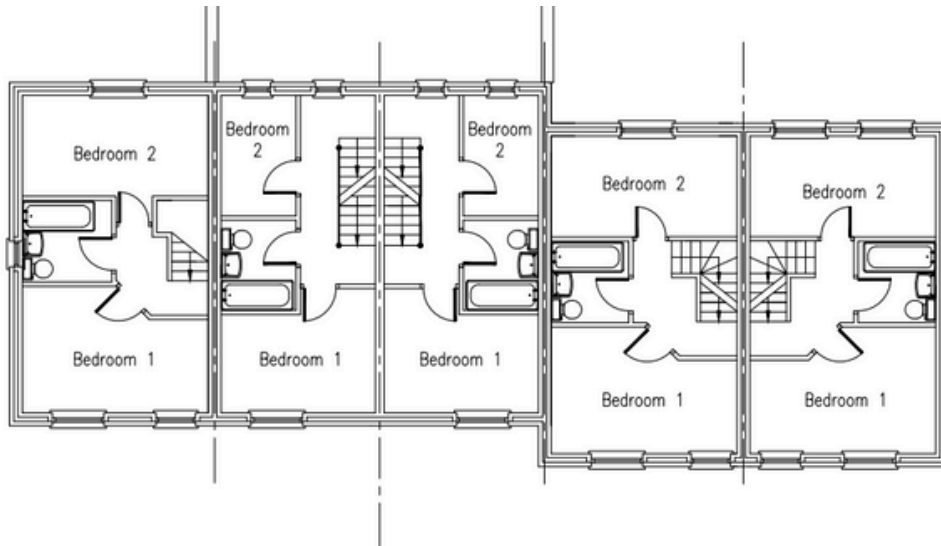


The Plans

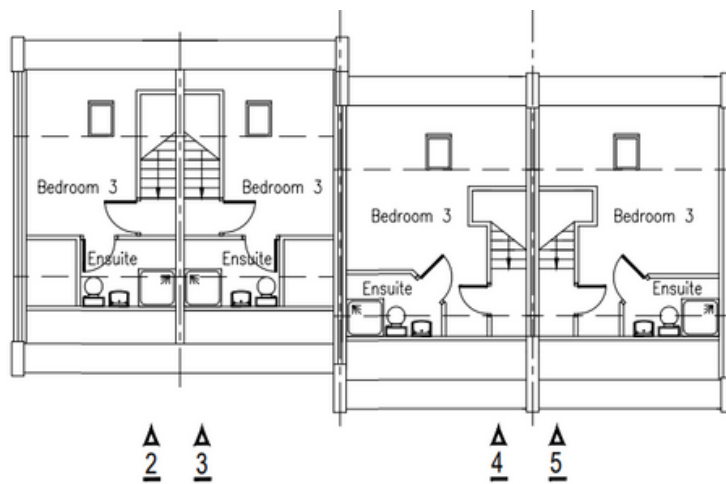
DEVELOPMENT AT EGTON



ground floor



first floor



attic

Want to know more. contact us.

W: www.myhendersons.co.uk

E: info@myhendersons.co.uk

T: 01947 602626

hendersons.
estate agents

