

HENDERSONS

Helping you move...



1 WHITE LEYS ROAD
WHITBY YO21 3PB

MODERN BATHROOM



ABOUT THIS PROPERTY

This 2 bedroomed semi detached home situated on the West side of Whitby in a popular residential area which is close to schools, shops and walking distance to town, would be ideal for a couple of family.

The accommodation briefly comprises of an entrance hall, lounge with views over the rear garden, kitchen with newly fitted cream shaker style wall and base units with a connecting porch and a useful utility area.

To the first floor there are 2 double bedrooms, with the rear bedroom boasting views as far as Whitby Abbey and

the front bedroom overlooks the Rugby ground. The modern family bathroom includes a bath with over head shower, wc and hand basin.

Externally, there is a lovely lawned garden which stretches from the front of the property to the rear with a paved pathway to walk along and high hedges which create a private outside space to relax in.

A Holding Deposit equivalent to one weeks rent (£155) will be required to secure the tenancy application once suitable to both parties. The Holding Deposit will be deducted from the first month's rent subject to suitable references. Provision of false or misleading information may result in the Holding deposit being retained by Hendersons.

Key information about this property...

- EPC Rating: E
- Council Tax Band: A
- Property Reference: 3680
- Services: All mains services connected
- Agreement: 6 month AST
- Deposit: £675



ACCOMMODATION

ENTRANCE HALL

KITCHEN 9' 1" x 10' 0" (2.77m x 3.05m)

Modern white shaker style kitchen with integral electric cooker and hob

LIVING ROOM 11' 4" x 16' 3" (3.45m x 4.95m)

with electric fire, tv point and radiator

UTILITY/STORE ROOM 10' 10" x 4' 7" (3.29m x 1.39m)

space and plumbing for washing machine and tumble dryer

SIDE ENTRANCE PORCH 7' 2" x 4' 6" (2.18m x 1.37m)

FIRST FLOOR

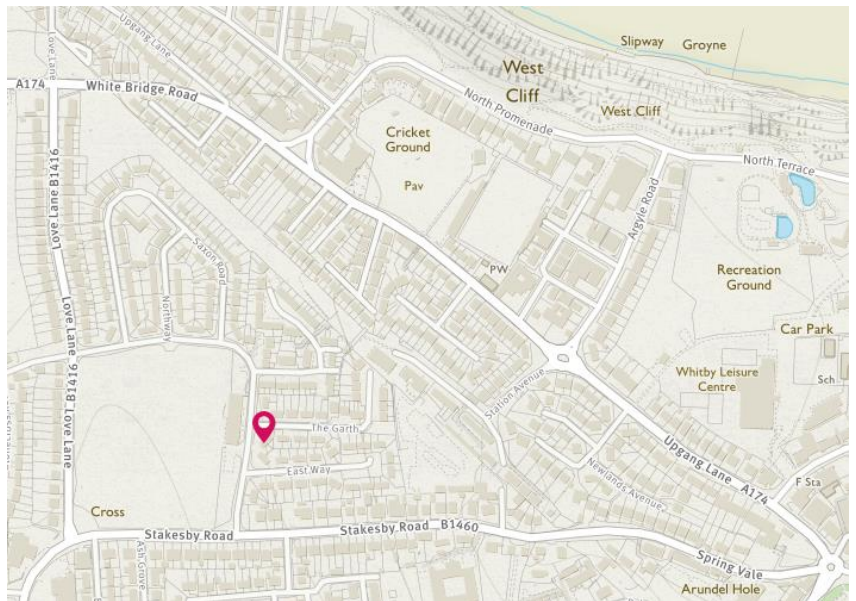
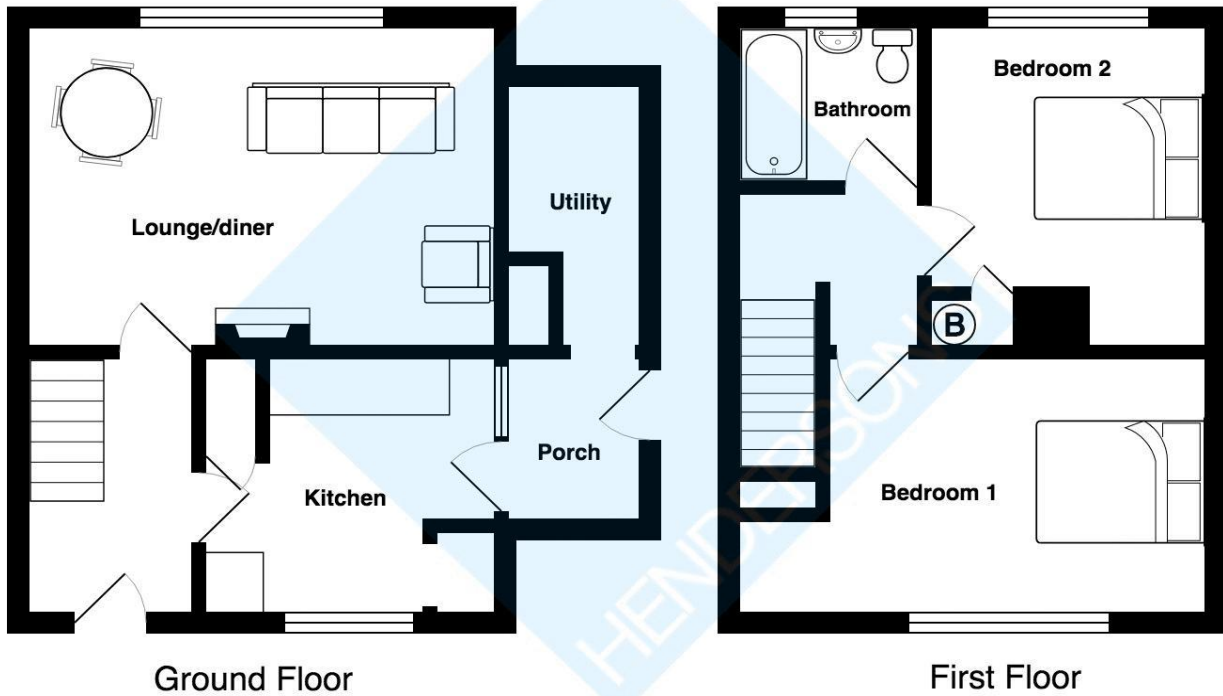
BEDROOM 1 8' 11" x 16' 2" (2.73m x 4.94m)

BEDROOM 2 11' 10" x 9' 9" (3.60m x 2.98m)

FAMILY BATHROOM 5' 5" x 6' 2" (1.66m x 1.88m)

newly fitted modern bathroom suite comprising toilet, basin, bath with over head shower

Monthly Rental Of £675



Want to book a viewing of this property call one of our property advisors on 01947 60 26 26

Monday to Friday – 8.30am to 8pm

Saturday – 9am to 5pm

Sunday – 10am to 4pm



All material is Copyrighted to Henderson Property Services (Yorkshire) Limited and must not be copied without written permission from Hendersons.

Henderson Property Services (Yorkshire) Limited trading as Hendersons
 Registered in England and Wales at 21 Flowergate, Whitby, North Yorkshire YO21 3BA
 Company No: 09395331 VAT No: 208959178

