

12 GLEHILL DRIVE

WHITBY, NORTH YORKSHIRE
YO21 1LS



Guide Price £285,000

12 Gledhill Drive, Whitby

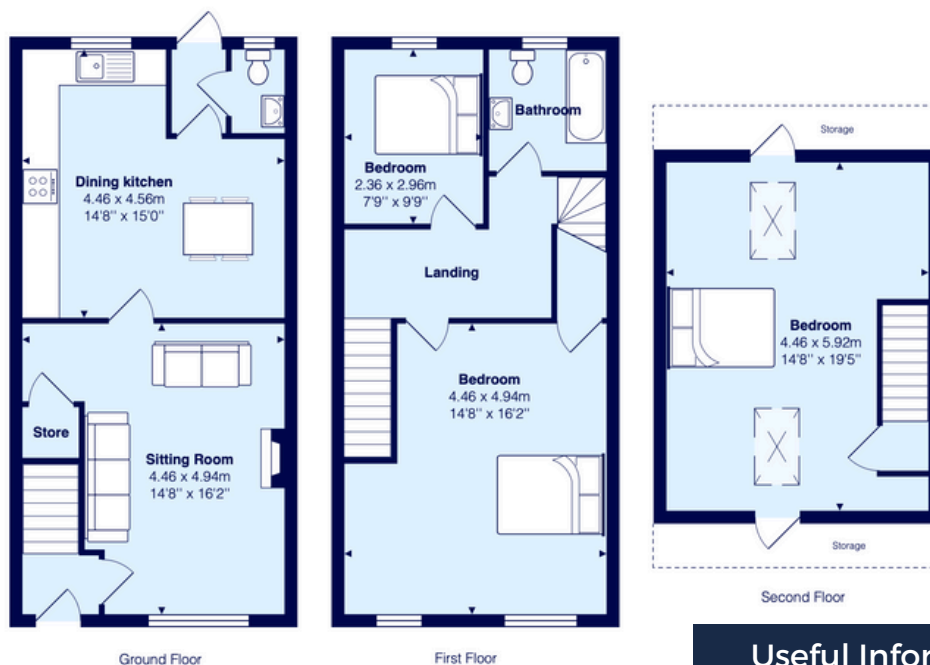
Hendersons introduce this three bedroom modern family townhouse to the market, located at the popular development of Gledhill Drive, well planned property caters for a large range of potential purchasers from family homes, moving to the coast and the potential holiday letting property, located close to the town centre but with the added benefit parking to the front of this home.

The property briefly comprises good sized sitting room, large dining kitchen to the rear with a great range of units offering plenty of storage, there is a rear entrance porch and a handy w.c off. There is a door that leads to the a rear terraced patio area and the tiered garden beyond.

To the first floor you have a large principal bedroom which benefits from views of Whitby Abbey and the pretty town rooftops. There is a further double bedroom to the rear currently used as an office and a modern white bathroom suite.

To the overall second floor has views across the harbour and there is a single bedroom and family bathroom on the first floor.

With close proximity to town and having the benefit of Abbey views this property will prove to be popular with buyers so don't delay and organise your viewing today.



All measurements are approximate and for display purposes only
©Henderson Property Services (Yorkshire) Ltd

Useful Information

- Tenure: Freehold
- Council Tax Band D
- EPC Rating TBC
- All mains services connected except Gas

Gallery

GLEDHILL DIVE



Want to know more. contact us.

W: www.myhendersons.co.uk

E: info@myhendersons.co.uk

T: 01947 602626

hendersons.
estate agents

