



hendersons.
estate agents

Julian Park Farm, Goathland
Whitby, North Yorkshire



Introducing Julian Park Farm, an exquisite property nestled between Egton Bridge and Goathland, Hendersons proudly presents this remarkable farm to the market. The focal point is an impressive detached stone house surrounded by a collection of barns arranged around a traditional courtyard. These barns offer versatile possibilities, ranging from potential holiday cottages and hobby spaces to accommodating livestock, pending the required permissions.

The farmhouse exudes grandeur with its high ceilings, large sash windows, and original period features, creating a captivating ambiance. The ground floor boasts a spacious entrance hallway, a lounge with fitted cupboards and an open fireplace, a dining room with full-height cupboards and an inset fire, and a basic kitchen featuring a solid fuel oven. Completing the ground floor is a basic bathroom, a store cupboard, and a pantry room.

Ascending to the first floor, you'll discover four generous double bedrooms and a well-proportioned single bedroom, all accessible from a sizable galleried landing. The front-facing bedrooms offer breathtaking views of the picturesque countryside.

The property's uniqueness is further emphasised by a staircase off the kitchen leading to the second floor. The attic space at the top of this staircase stands out as one of the most impressive attic rooms, ripe for conversion into a magnificent master suite comprising a spacious bedroom, dressing room, and an en-suite bathroom.

Externally, the property continues to impress with a cluster of traditional barns surrounding a central courtyard. Noteworthy features in these barns, such as large open beams and a stone staircase in the granary store, could be transformed into captivating architectural points of interest. With vision, this space holds immense potential for development, offering substantial income opportunities.

Additionally, the farm includes expansive agricultural outbuildings that can be repurposed for farming activities or transformed into gardens for the cottages. Spanning 5 acres, Julian Park Farm presents a compelling opportunity for equestrian enthusiasts or those aspiring to run a smallholding.

We anticipate high interest from potential purchasers seeking a property that seamlessly combines charm, potential, and expansive grounds.

There is a further 16.08 acres available to rent on a Farm Business Tenancy agreement the rent per annum will be £2,000, the length of Farm Business Tenancy agreement to be negotiated with the vendor upon application.

Guide Price £725,000

“What an amazing property with so much potential for a variety of uses, this will be a truly outstanding property once renovated”

NICK HENDERSON













MULGRAVE
— ESTATE —

Julian Park Farm, Goathland

**Additional
Land Plan**



Publication date: 15/06/2024
© Crown copyright and database right 2024. Ordnance Survey 100049222



Would you like to know more about this property, call one of our property consultants on +44 (0)1947 602626 or visit myhendersons.co.uk for more information

All material is Copyrighted to Henderson Property Services (Yorkshire) Limited and must not be copied without written permission from Hendersons.

Henderson Property Services (Yorkshire) Limited trading as Hendersons

Registered in England and Wales at 21 Flowergate, Whitby, North Yorkshire YO21 3BA

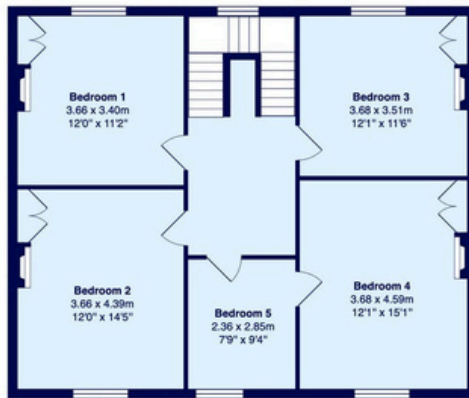
Company No: 09395331 VAT No: 208959178

hendersons.
estate agents

Farmhouse Floorplans



Ground Floor



First Floor



Second Floor

All measurements are approximate and for display purposes only
©Henderson Property Services (Yorkshire) Ltd

Additional Land Plan



Would you like to know more about this property, call one of our property consultants on +44 (0)1947 602626 or visit myhendersons.co.uk for more information

All material is Copyrighted to Henderson Property Services (Yorkshire) Limited and must not be copied without written permission from Hendersons.

Henderson Property Services (Yorkshire) Limited trading as Hendersons

Registered in England and Wales at 21 Flowergate, Whitby, North Yorkshire YO21 3BA

Company No: 09395331 VAT No: 208959178

hendersons.
estate agents